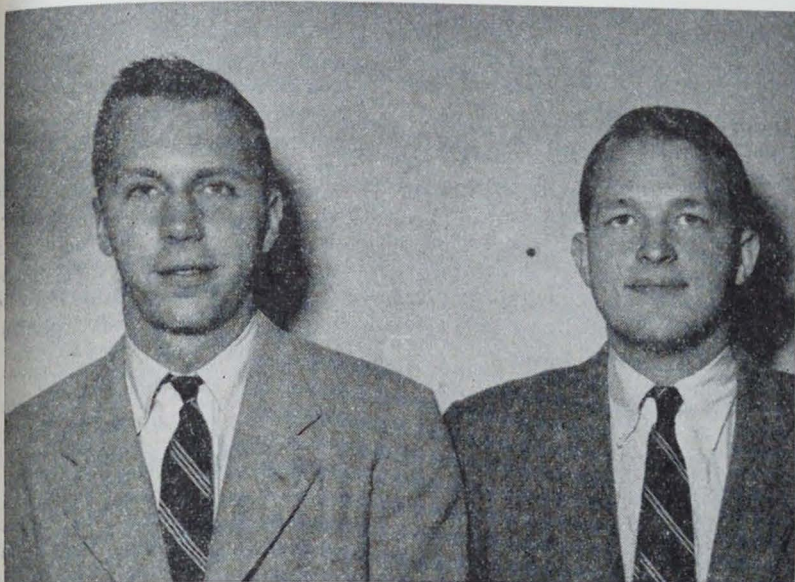


## Rivals Clash In Senate Elections



Moe Thomas

Charlie Gardner

### DELTA PSI

James M. Thomas, candidate from Delta Psi, has been an active participant on the college swimming teams for three years. Besides lettering in that sport in his sophomore year, Moe has also proved himself an accomplished tennis player. He has been on both freshman and varsity tennis teams.

Among his other activities, Moe served during his first year on the Interdormitory Council.

The candidate from Baltimore and Delta Psi, Charles S. Gardner, has distinguished himself in several activities.

Outstanding among these has been his work on the *Tripod*. Charlie has served both as feature and co-news editor on the campus publication.

His other activities include the Sophomore Dining Club, and a Junior Advisorship. Charlie is a History and English major.

### Students to Vote For Class Officers, Senators Tomorrow

The twenty-six candidates pictured on these pages will try for the thirteen Senate positions tomorrow. Voting will be either in front of Seabury or, in case of rain, in Seabury Lounge. Class officers for '55, '56, and '57 will also be decided in the voting.

All classes will decide on the Senate candidates; each voter will choose one of the two men from each fraternity, from Brownell, and from the on-campus neutrals; each voter will select one of the three candidates from the off-campus neutrals. All undergraduates are qualified and urged to vote.

This special edition of the *Tripod* is designed to acquaint the student body with the picture and experience of each candidate. The picture will enable some to connect names with faces. The brief sketches of campus activities are certainly not the definitive judgment of the candidate's ability or experience for the position. They only suggest the candidate's participation in athletic, social, and political activities. They do not serve as full evidence of necessary qualifications for the Senate. Only personal acquaintance with both candidates and with the Senate would serve fully.



Nai Chang

Lee Lahey

### DELTA KAPPA EPSILON

Nai Y. Chang of New Rochelle, New York, has been nominated from Delta Kappa Epsilon for the Senate. Nai has played on the soccer teams the three years he has been at Trinity. As a Sophomore, he was a member of the Inter-Dormitory Council and is Corresponding Secretary of his fraternity.

On campus this year, Nai has participated in the Young Republicans and served on the Junior Prom Committee.

Lee A. Lahey, of Pelham, New York, was nominated by Delta Kappa Epsilon for the position of Senator. In his Freshman year he managed the freshman track team, and he participated in most fraternity intramural activities.

In the fraternity, Lee served as Corresponding Secretary last year and is serving as Secretary of the fraternity this year. He is also DKE's representative to the Intramural Council.



Dick Wainman

John Dluhy

### PI KAPPA ALPHA

Richard R. Wainman, candidate from Pi Kappa Alpha, is House Manager of that fraternity. He is a varsity debater in the Antheneum Society, and a member of the Foreign Policy Association. Dick has served two years on the commercial staff of the *Tripod*, he is an active participant of the college's service fraternity, Alpha Phi Omega, and is associated with the Protestant Fellowship.

### ALPHA CHI RHO

Robert B. Riley, III, has as his home address, Washington, D. C., and graduated from St. Albans School. He runs as a candidate from Alpha Chi Rho for the Senate. He majors in History and English.

Bob played freshman baseball and was active in the Campus Chest in both his freshman and sophomore years. This year he headed the Red Cross drive in his fraternity.

### PSI Upsilon

Arthur McCully of Greenwich, Connecticut, graduated from Governor Dummer Academy; he participated in frosh soccer and squash. Sandy is a member of the Corinthian Yacht Club and the steward of Psi Upsilon.

### PI KAPPA ALPHA

Contesting for the Senatorial post from Pi Kappa Alpha, John J. Dluhy was one of the college students chosen to appear on television with G. Keith Funston. He is Corresponding Secretary of his fraternity, and has served on the Junior Prom committee. He is an active member of the Glee Club and WRTC, and he is also the Secretary of the college ham radio station, W1JUD. He has worked on the Campus Chest Committee, and has acted as the intramural representative for his fraternity.

### ALPHA CHI RHO

Craig A. Mehldau, candidate for the Senate from Alpha Chi Rho, hails from Brooklyn, New York; he graduated from Fort Hamilton High School.

Craig is pre-med at Trinity and has been active in the Campus Chest during his Freshman and Junior years. He played football and swam his Frosh year, and has continued on the Varsity Swimming team for the past two years.

### ALPHA THETA

Opposing Dick Kopp in the Senate elections, Thomas T. Callahan of Bronxville, New York, is a worthy opponent.

Tom is at present the Treasurer of Alpha Theta, and Chief Engineer of the college's ham radio station, W1JUD. It was mainly due to Tom's effort that the station with its equipment was set up on the campus. The next pet project on Tom's list is a cyclotron in the Physics Building.



Sandy McCully

George Kennedy

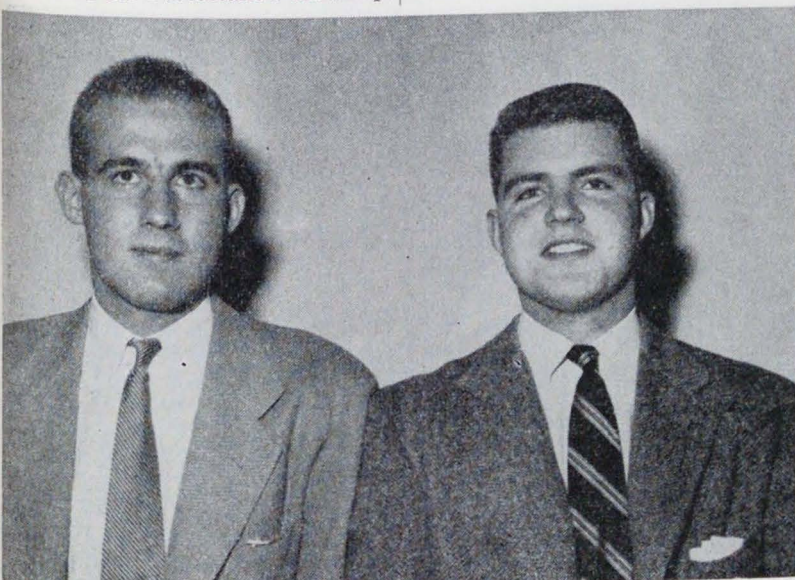
### ALPHA THETA

Co-captain-elect of the fencing team, Richard S. Kopp, of Hamden, Connecticut, is one of Alpha Theta's candidates for the Senatorial post.

In his freshman year, Dick worked as a reporter on the *Tripod*. He is at present the President of his fraternity.

### PSI Upsilon

George C. Kennedy, Jr., is a candidate from Psi Upsilon. He graduated from Shady Side Academy, and participated in the glee club and tennis in his freshman year. He is majoring in English and is presently treasurer of the fraternity.



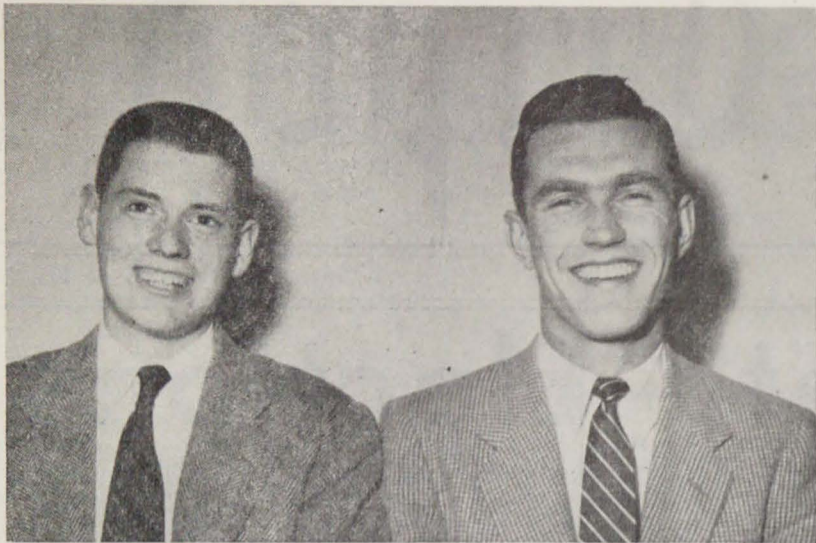
Bob Riley

Craig Mehldau



Tom Callahan

Dick Kopp



Gerry Snyder                      Lance Vars

THETA XI

Gerald C. Snyder of Waukegan, Illinois, a candidate from Theta Xi, was a member of the Glee Club in his first year. He served on the Sophomore Hop Committee and has been on the R.O.T.C. Cadet Council for the past two years.

Jerry's activities around campus include the Young Republicans and the Foreign Policy Association. He was a delegate to the conference of N.A.T.O. held at UConn this February and to the Far Eastern Foreign Policy Conference at Trinity in March.

**THETA XI**  
Clarence A. Vars, candidate from Theta Xi, hails from Westerly, Rhode Island. He is a member of the Sophomore Dining Club and was president of the class of 1954 for the past year. He served as Chairman of the Junior Prom Committee. He was Junior Steward of Theta Xi.  
Lance won numerals for swimming in his Frosh year and was co-captain.

OFF-CAMPUS NEUTRALS

A Converse scholar, Robert F. Werner is running for the off-campus neutral post in the Senate. He is majoring in English and plans to go into law. A graduate of the Kingswood School, he is active as a reporter on the Tripod.

Politically, he is a member of the West Hartford Young Republican Club and the Hartford Foreign Policy Association. At present, he is employed at the Aetna Life Insurance Company in preparation for a law career.



Bob Werner                      Bob Sind

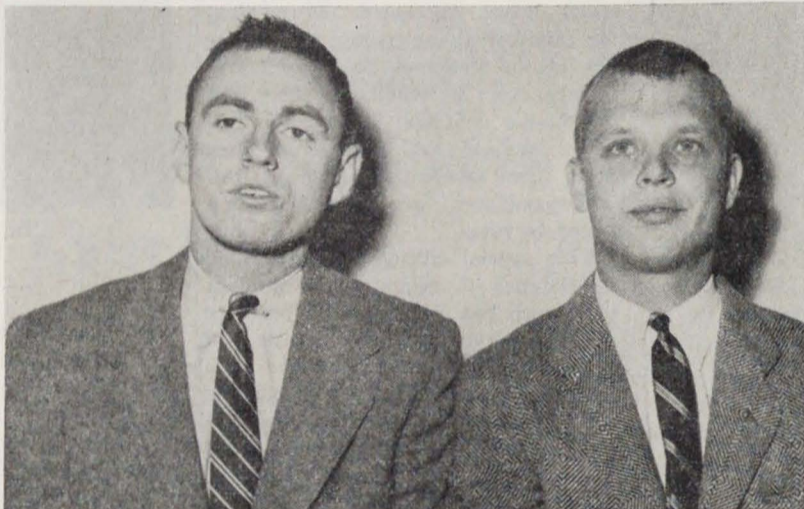
OFF-CAMPUS NEUTRALS

Robert L. Sind, off-campus neutral candidate for the Senate, lives in West Hartford. He was a member of the Freshmen Executive Council and chairman of the Freshmen Prom Committee, a member of the Sophomore and Junior Prom Committees, and a staff member of the Tripod during his freshman and sophomore years. He is presently public relations assistant of the College, and is engaged as a public relations counselor by several organizations in Greater Hartford.

ALPHA DELTA PHI

William T. O'Hara, a Matthew George Thompson scholar from New Haven, is a candidate from Alpha Delta Phi. A government major, he served on the Interdormitory Council in his freshman year, and is a member of the Political Science Club.

On the athletic side, he has been a member of the lacrosse team for three years. Last year he was elected to the Sophomore Dining Club and vice-president of the Newman Club. He has worked on the Jesters' staff and on the Sophomore Hop Committee. Bill has also worked for WRTC and served under Dave Roberts on the Campus Chest.



George Lunt                      Bill O'Hara

ALPHA DELTA PHI

George C. Lunt of Alpha Delta Phi has been a sports enthusiast since he came to Trinity in 1951. Vice President of his fraternity, he is a history major and hails from Greenfield, Massachusetts. He co-captained the freshman soccer team, and has been a regular on the varsity the past two years.

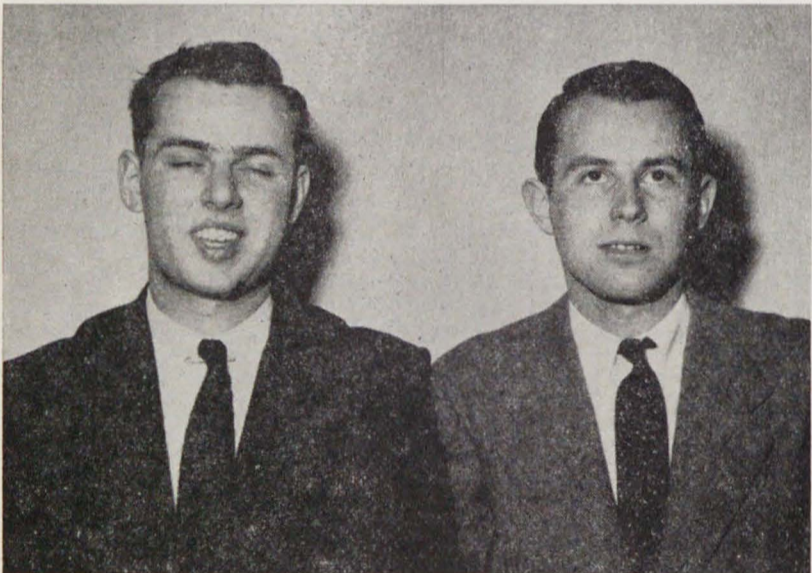
Also talented in lacrosse, George was elected co-captain this year. Last year he was selected as vice president of his class and elected to the Sophomore Dining Club. This year he has served as a Junior Advisor.

Active socially, George has worked on the Junior Prom Committee.

DELTA PHI

Robert W. Golledge, of Springfield, Massachusetts, runs as Senate candidate from Delta Phi. As a freshman, he served on the Interdormitory Council and was Junior Advisor this year.

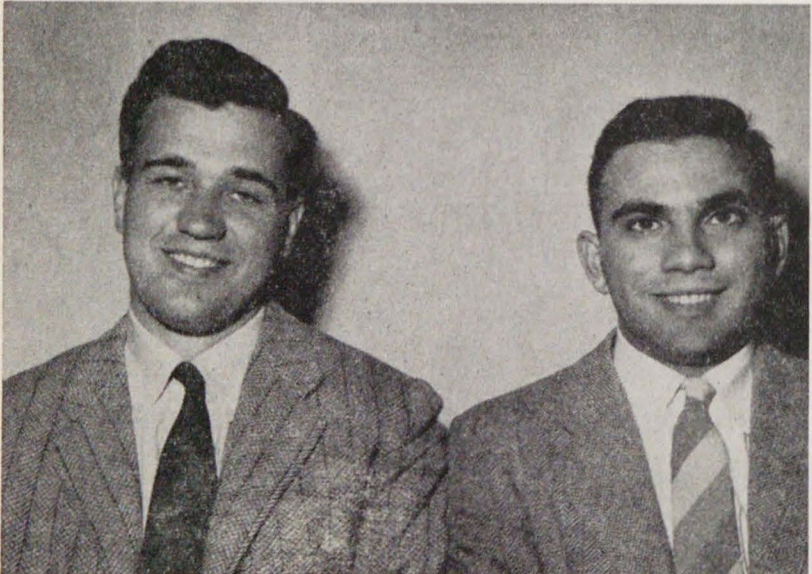
Bob has participated in the actions of his fraternity, serving as Corresponding Secretary this year and as a member of the Junior Prom Committee. On campus, he has been President of the Canterbury Club in his sophomore year, and has been on the Campus Chest, both frosh and junior years.



Bob Golledge                      Bob Bennett

ON-CAMPUS NEUTRALS

James C. Van Petersilge, a scholarship holder from Deerfield, Massachusetts, is opposing Frank Solomita in a bid for the on-campus neutral's post in the Senate. Jim has participated in the Air Force ROTC Rifle Team and has been active in intramural softball. An Economics major, he has worked in city political campaigns.



Jim Van Petersilge                      Frank Solomita

OFF-CAMPUS NEUTRALS

John P. Gallagher of Hartford is one of the three men running for the Senate as an off-campus neutral. A graduate of Hartford High, he is majoring in chemistry. Jack was the top hurler on the freshman diamond squad, and is currently throwing for the varsity. He is a member of both the Newman and Chemistry Clubs.

DELTA PHI

Robert P. Bennett, coming from Newington, Connecticut, is a candidate from Delta Phi. His major is chemistry and he joined the Chemistry Club this year.

Bob has been an active member of the Corinthian Yacht Club during his three years at Trinity. He has also participated fully in Delta Phi, serving as Vice President of the fraternity this year.

BROWNELL CLUB

Richard P. Welch, of East Hartford, runs as candidate for the Senate from the Brownell Club. He is Vice President and Chairman of both the Social and Constitutional Committees in the organization.

Dick is a veteran of the Air Force for two years, serving also in Korea. He majors in Education.

ON-CAMPUS NEUTRALS

Frank M. Solomita is running for On-Campus Neutral Senator and hails from Waterbury, Connecticut. He played both freshman football and baseball.

Frank served on the Junior Prom Committee this year and is a member of the Newman Club.

SIGMA NU

Louis R. Magelaner has been selected as a Sigma Nu candidate for the Senate, and hails from Brooklyn, New York. In the fraternity, he serves as Vice President and as a member of the Executive Committee.

In sports, Lou has "played them all." His freshman year he was a member of the football, basketball, and baseball squads. He continued to make varsity letters in both football and baseball for the past two years.

BROWNELL CLUB

Benjamin Rudner, from Hartford, has been chosen as a candidate for the Senate from the Brownell Club. He has served as Secretary to the organization and on the Social and Fellowship Committees of Brownell.

Around campus, Ben has played in the Trinity Band and has been a member of the Junior Prom Committee. He has actively participated in the Hillel Society and is a philosophy major.

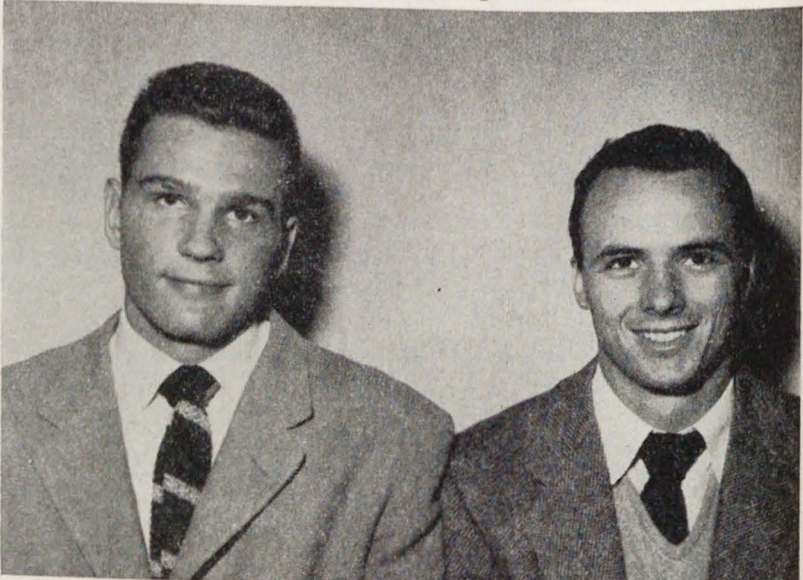


Dick Welch                      Ben Rudner

SIGMA NU

Charles F. Eberle, hailing from Windsor, Connecticut, has been selected as Senatorial candidate from Sigma Nu. In the fraternity he has served as secretary and as chaplain.

In sports, Charlie has played the year round. While a freshman, he played football and won numerals in both swimming and track.



Lou Magelaner                      Charlie Eberle