

The Trinity Tripod

VOL. VI. No. 14.

HARTFORD, CONN., Friday, November 12, 1909.

PRICE, FIVE CENTS.

PROSPECTS OF WESLEYAN GAME.

Records and Statistics of Both Teams.

To-morrow Trinity meets Wesleyan on Trinity Field in the annual football game. Last year Trinity had an easy time with the red and black, but this year it is an entirely different story. Wesleyan has a heavier and much more aggressive team than last year, while Trinity has a team which is light but aggressive. The game promises to be the best and hardest fought ever seen on Trinity Field. Both teams are conservative in their opinions as to the result and the final score and to whom the victory belongs will remain in doubt until the end of the game to-morrow.

Trinity's play has been thus far inclined almost entirely to the open game, end runs being used the most. The teams which have already been played have been generally heavier than Trinity, so line plunging has been impossible. With a light team the new and open game seems to be the better adapted. Four of last year's successful 'varsity have been lost by graduation, while four men who entered Trinity this fall for the first time have been playing in the line. The condition of the team has been excellent throughout the season and but one serious injury has been the result: Henshaw badly hurt his ankle while running back a punt in the Colgate game. He has been going about on crutches for the last two weeks, and it is doubtful if he will be able to enter into the game to-morrow. This week Coach Gettell has been working the men hard and the team as a whole is in the prime of condition.

Wesleyan has played a game this year which is greatly improved over that of last year. This team has been playing the open style of game a great deal, with the addition of the on-side kick, which Wesleyan has down to perfection. This team has met several heavy teams, as Williams and Vermont, with which a comparatively even game has been the result and the line plunging of White a feature. The only team which both Trinity and Wesleyan have played is Norwich. Norwich beat Wesleyan 6 to 0; while Trinity defeated Norwich 13 to 5. These two games, however, do not show the comparative strength of the teams, as the Wesleyan-Norwich game was played early in the season. The Wesleyan team has been much more free from serious injuries this year than ever before and with both teams practically free from former injuries, a game that will be worth while must certainly be the result.

Manager Groves of Trinity has made arrangements to manage a record breaking crowd. Wesleyan expects to send up two hundred and fifty undergraduates and as many more alumni. These

Wesleyan supporters will be cared for on the east side of the field, where the baseball bleachers have been moved to accommodate them. The game is to be called promptly at 2:30. Herr of Dartmouth will be referee, Lowe of Dartmouth, umpire, and Kilpatrick of Union, field judge.

During this week several members of past Trinity teams have been on the field aiding Coach Gettell. Among them are "Pop" Sutton '99, captain of the '98 team, "Len" Ellis '99, Dudley Graves '98, "Jimmy" Lord '98, Allen '94 and Owen Morgan '06.

The record of both teams may be of interest to the readers of the Tripod.

Trinity has played six games, won three, tied two, and been defeated by the strong Army team.

Trinity.....12, W. P. I.	6
Trinity..... 6, West Point	17
Trinity..... 5, Holy Cross	5
Trinity.....13, Norwich	5
Trinity..... 0, Colgate	0
Trinity.....64, Storrs	0
100	33

Wesleyan's record is:—

Wesleyan..... 0, Yale	11
Wesleyan..... 0, Norwich	6
Wesleyan..... 5, Vermont	5
Wesleyan.....12, Stevens	0
Wesleyan.....26, Hamilton	0
Wesleyan.....23, Union	3
Wesleyan.....12, N. Y. U.	13
Wesleyan.....6, Williams	7
74	45

The statistics of the Trinity team are as follows:—

	A	W	H
Henshaw, (c)1910	22	160	5.8
McElroy, c.1910	22	157	5.11
Cook, p. b.1910	21	150	5.9
Burdick, l. e.1911	20	160	5.9½
Gildersleeve, r. e.1911	22	165	5.8½
Ramsdell, l. h. b.1911	20	178	5.9
Carroll, f. b.1911	21	164	5.11
Loveland, l. g.1912	23	180	5.9
Woodbury, l. t.1913	18	167	6.
McCreery, r. g.1913	19	178	5.11
Howell, r. t.1913	18	160	6.1
Capen, l. e.1910	22	156	5.8
Bassford, h. b.1910	21	150	5.8
Eaton, h. b.1910	19	160	5.8½
Nelson, r. t.1910	23	163	5.10½
Breed, l. t.1910	19	160	5.11½

The average weight of the regular 'varsity is 166 pounds.

The Wesleyan statistics:—

	A	W	H
Schlie, l. e.1913	19	153	5.10
Bomhardt, l. t.1913	20	192	6.
Wilcox, l. g.1910	21	184	6.3
Mitchell, c.1912	20	180	5.10
Joy, (c) r. g.1910	21	186	6.1

Continued on Page 3.

COLLEGE MEETINGS DURING THE PAST WEEK.

Much Enthusiasm Shown and New Songs Tried.

Two most enthusiastic college meetings were held this week, one on Tuesday night and the other on Thursday night. The purpose of these meetings was to organize the cheering and singing for next Saturday, and to afford the college body a chance to give expression to the enthusiasm and excitement over the coming game. These meetings were most encouraging. Practically the whole college body attended both of them, crowding one-half of Alumni Hall; and the cheering and singing were fine and spirited.

Tuesday night George Capen, the president of the College Senate, opened the meeting with a short speech, and then called on "Pop" Sutton of the class of '99. "Pop" is one of the best football players that the college has ever turned out, and at present he is perhaps the most enthusiastic alumnus of the college. He is here now with some other former football men helping Coach Gettell round the team into shape. He made a spirited speech, in which he told the students what he thought of the team, and stirred up great enthusiasm when he said that he felt sure that Trinity would defeat Wesleyan. After this speech the men gathered around the cheer-leaders and did some fine singing and cheering.

The meeting Thursday was given over to practicing new cheers and songs, one of which was written by Whitehead of the Freshman class.

Whitehead's song is as follows:

FIDELITY TO TRINITY.

Tune—"Annie Laurie."

I.

Where old lofty Northam towers
Her peaks into the sky,
There we learn the strength of knowledge

As passing years roll by.

Chorus.

There—We learn Fidelity,
To dear old Trinity,
And though years merge into ages
We'll be faithful to Trinity.

II.

With his hand outstretched in blessing
The Bishop guards us all,
And his kindly benediction
Rests on our college halls.

Chorus.

Where we learn fidelity
To dear old Trinity
With the good old Bishop guarding
Every son of old Trinity.

III.

When the sun of life is sinking
And pleasure's thread is lost,
Oft of Trinity we're thinking
And the days we loved the most.

Chorus.

For we've learned fidelity
To dear old Trinity,
And to death's wide yawning portals
We'll be faithful to Trinity.

COLLEGE CALENDAR.

Friday, November 12—

College meeting in Alumni Hall at 6:45 p. m.

Saturday, November 13—

Trinity vs. Wesleyan on Trinity Field at 2:30 p. m.

Sunday, November 14—

Chapel services:

7:45 a. m., Holy Communion.

9:15 a. m., Morning prayer and sermon.

5:00 p. m., Vesper service.

Monday, November 15—

Mandolin Club rehearsal in the English room at 6:45 p. m.

Tuesday, November 16—

Glee Club rehearsal at 81 Vernon street at 6:45.

Thursday, November 18—

Mandolin Club rehearsal in the English room at 6:45.

Friday, November 19—

Glee Club rehearsal at 81 Vernon street at 6:45.

Saturday, November 20—

Trinity vs. Haverford at Haverford.

NEW TRUSTEE ELECTED.

W. G. Mather '77 Becomes a Member of the Board.

Official announcement has lately been made that William G. Mather of Cleveland, Ohio was elected a trustee of the college at the meeting of the Board of Trustees, which was held on October 30th. The reason that this announcement was not made public earlier was because it was not certain that Mr. Mather could accept the position. However, he accepted and will probably take his seat at the next meeting.

Mr. Mather is a graduate of the class of 1877 and while in college was a member of the Beta Beta Chapter of Psi Upsilon Fraternity. At present he is a resident of Cleveland, Ohio, where he takes a very important part in the iron ore industries of the Great Lakes. He is president of the Cleveland-Cliffs Iron Company, which for many years has been one of the largest ore carriers on the lakes. Besides valuable ore lands, Mr. Mather controls extensive timber lands, most of which are situated in northern Michigan.

He has always been actively interested in college affairs, and recently gave \$50,000 to Prof. J. J. McCook's endowment fund. In electing Mr. Mather the trustees are following out their policy of selecting prominent and active business men from the alumni to serve on the board.

NOTICE.

All Seniors and Juniors are requested to hand in their college honors as soon as possible to either Rosebaugh '11 or Taylor '11 for the 1911 Ivy. The Juniors should see Porteus '11 immediately and arrange for having their photographs taken at Oliver's Studio.

The Trinity Tripod

Published Tuesdays and Fridays
in each week of the college year by
students of Trinity College.

All communications, or material of
any sort for Tuesday's issue must be
in the Tripod box before 10 p. m. on
Monday; for Friday's issue before 10
a. m. on Thursday.

Subscribers are urged to report
promptly any serious irregularity in
the receipt of the Tripod. All com-
plaints and business communications
should be addressed to the Circulation
Manager.

Entered as second class matter Nov. 29,
1904, at the Post Office, at Hartford, Ct.

R. H. MERRILL '10, Editor-in-Chief.

B. F. YATES '11, Athletic Editor.

H. K. REES '11, Alumni Editor.

Managing Editors.

W. A. BIRD '12 A. E. RANKIN '12

Associate Editors.

C. CARPENTER '12

J. GROVES '10, Secretary.

Business Department.

ALBERT CLARK '11, Treasurer.

F. J. BRAINARD '11, Advertising Mgr.

W. G. GIBSON '11, Asst. Advertising
Manager.

H. S. EVISON '12, Circulation Mgr.

Subscription Price, \$2.00 Per Year.

Advertising Rates furnished on appli-
cation.

Office, 14 Jarvis Hall.

EDITORIAL.

To-morrow the football season will
be at the climax here at Trinity, for the
all important game Wesleyan is to be
held on Trinity Field. The team has
been busy during the past week getting
into the best condition possible and
judging from the kind of practice which
has been shown lately the team should
play their best game of the season.
Every man on the team realizes that he
must play his best, if the tallies are to
show a balance on the Trinity side, and
entering into it in this spirit is going to
be a great asset towards winning the
game. If this game is won, this year's
football team will go down in the annu-
als as one which has had no superior in
the history of football at Trinity. With
the team feeling this way, it only re-
mains for the entire undergraduate
body to come out and do their best to
help and support the players. It is an
oft repeated statement and at the same
time one of the truest, that many games
are won largely by the cheering and
singing of the supporters of one side.
With this in mind every student should
have attended the college meetings held
during the past week for practicing new
cheers and songs and also to getting
more volume on the old ones, and he
should be on the field at an early hour
to obtain his seat in the cheering section.
Each undergraduate should feel it his
bounden duty to do all in his power to
bring a victory, and this duty is best
shown by his presence in the cheering
section at every contest on our home
field. It is recognized that Wesleyan
has shown excellent ability in this mat-
ter of so to speak "rooting for its team."
No one here wants to suffer the humility
of going on our field and having the
visiting team better supported than our
team is. Another phase of this subject

relates to the impression on the alumni.
If the alumni come out to the game, as
undoubtedly a great many will, and see
the undergraduates displaying great en-
thusiasm and college spirit it is only
natural that their feeling and love for
the college would be proportionally
strengthened. The college to-morrow
is really in a way on exhibition and let
us all make it as worthy of our institu-
tion as lies within our power. From
now until the end of the game, let every
one keep this in mind, that if each one
does his share a victory is assured.

WESLEYAN'S INAUGURATION CEREMONIES.

W. A. Shanklin Officially Takes
Chair.

The changes in the office of the chief
of administration in New England col-
leges seem to run in groups of three,
the changes occurring every ten years.
Just a decade ago the presidents of
Trinity, Wellesley and Yale were in-
augurated. This year comes the inau-
gurated of new presidents at Harvard,
Dartmouth and Wesleyan. Interest at
Trinity in the inauguration of the new
chief executive of Wesleyan is very high
owing to the fact that Wesleyan is our
nearest collegiate neighbor.

The ceremonies for the inauguration of
President William Arnold Shanklin
were most imposing and to-day, the
date of the event, will probably go down
as one of the most memorable in the
history of Middletown. President Shan-
klin took the oath of office in the pre-
sence of President William H. Taft,
Vice-President Sherman and a group of
notables including a large majority of
the foremost educators of the country.
Perhaps, seldom before in the history
of Connecticut has such a notable group
of nationally prominent men been
brought together.

President Shanklin succeeds to the
office of president of Wesleyan Uni-
versity, changing the administration for
the first time in thirty-eight years. The
advent of a new president means a
change, and the infusion of new blood
into the college and its life. Wesleyan
begins her new career with every pros-
pect of a brilliant development. Her
assets figure into the millions, her build-
ings are among the most beautiful in
New England, her standard of scholar-
ship ranks with the best.

The new executive has been in Mid-
dletown for the past few months and
already he has won the confidence, re-
spect and admiration of students, fac-
ulty and alumni. Dr. Shanklin is a
graduate of Hamilton College and his
career as an educator has been pur-
sued principally in the West where his
ability has long been recognized. He
is known to be a progressive worker
and an earnest scholar.

BLEACHERS PLACED ON EAST SIDE OF FOOTBALL FIELD.

Thursday afternoon the football field
was a scene of great activity, much
amusement, and some real labor when
the bleachers which face the baseball
field were carried bodily over to the
east side of the football field. The
bleachers were first jacked and braced
and then dragged over to their new po-
sition by a crowd of about a hundred
students. These bleachers will be re-
served for the use of the Wesleyan
rooters.

P. H. BILLINGS,
MERCHANT TAILOR,
9 Asylum St., HARTFORD, CONN.
POPULAR PRICES.

T. C. HARDIE,
CAFE AND
PACKAGE STORE,
283-287 Park St.
Nearest Package Store to the College.

 **Eaton, Crane &
Pike Company**

..Makers of High Grade..
Papers
and
Society Stationery,
PITTSFIELD, MASS.

S. SALAD,
TAILOR,
49 Pratt St., HARTFORD, CONN.

IN ANTICIPATION OF CHRISTMAS.

At our Book Dept., we have
a line of Samples from which to
choose private Greeting Cards
for the Holidays. You can make
your selection as to style. Have
your Christmas or New Year's
Wish or Greeting, with your
name and address beautifully
put thereon, giving you practi-
cally a private card.

Come make your selection
and have that matter settled
before the December rush. You
will be pleased with our sam-
ples. Your order will cost you
from \$1.20 a dozen upwards
including envelopes.

**BROWN, THOMSON
& COMPANY.**

Tufts College Medical School

Offers a four years' graded course including all branches
of Scientific and Practical Medicine. The laboratories
are extensive and fully equipped. Clinical instruction is
given in the various Hospitals of Boston which afford
facilities only to be found in a large city

The diploma of Trinity College is accepted in lieu of entrance examinations. For further information or a
catalog, apply to

FREDERIC M. BRIGGS, M. D.,

Secretary, Tufts College Medical and Dental School,
416 Huntington Avenue, Boston, Mass.

THIS WILL TICKLE YOU.
To know that you can have your clothes
pressed and cleaned for only
\$1.00 a month.

GET WISE
THE COLLEGE TAILOR,
44 VERNON STREET.



A Rathskeller down
stairs for private
Parties, Dinners and
Banquets.

SMOKE AND BUCK.

LYMAN R. BRADLEY,
PIPES, CIGARS,
Smokers' Articles
436 Asylum Street.

THE BOARDMAN'S LIVERY STABLE
INCORPORATED
First Class Coach Service
For Dances, Receptions, Etc.
356-358 MAIN ST.

Telephone 930 All night coach service

The General Theological Seminary,
Chelsea Square, New York.
The Academic Year begins on Wednesday, the first
Ember Day in September.
Special Students admitted and Graduate course for
Graduates of other Theological Seminaries.
The requirements for admission and other particulars
can be had from
The VERY REV. WILFORD H. ROBBINS,
D. D., LL. D., DEAN.

THE OLIVER STUDIO

752 Main Street

HARTFORD, : : CONNECTICUT

THE SISSON DRUG CO.

CHEMICALS, DRUGS
AND MEDICINES.

729 MAIN STREET

FRESHMEN SHOULD KNOW
that all Trinity men
GO TO

MARCH'S BARBER SHOP

Room 1, Connecticut Mutual Building
He always advertises in our periodicals.

CARRIAGES.

When wishing Hacks for Evening Parties,
Receptions and Dances, get prices from
F. P. WILSON,
20 UNION PLACE.
Tel. 1145.

Tufts College Dental School

Three years' graded course covering all branches of
Dentistry. Laboratory and scientific courses given in
connection with the Medical School. Clinical facilities
unsurpassed, 30,000 treatments being made annually in
the Infirmary.

The Medico-Chirurgical College of Philadelphia

HAS FOUR DEPARTMENTS

Medicine, Dentistry, Pharmacy and Pharmaceutic Chemistry

The instruction in each is thoroughly practical, laboratory work, ward work and bedside teaching receiv-
ing particular attention. All courses are carefully graded, and free quizzes by professors and trained instruc-
tors, clinical conferences and modern seminar methods are special features.

All students are accorded the same college privileges and those in Medicine and Dentistry have the advan-
tage of abundant clinical material, as the College has its own Hospital and the largest and finest clinical
amphitheatre in the world. Students in pharmacy are trained to fill lucrative commercial positions, and those
in Pharmaceutic Chemistry for the many openings created by the new Pure Food and Drug Laws.

Address the Dean of the Department in which you are interested for an illustrated announcement describ-
ing courses in full and containing information as to requirements, fees, etc.

COEBILL
\$2.50
.. HAT ..
 (None better for \$3.00)

ZIMMERMAN CAFE

Successor to GUS KOCH

WHERE MEN EAT DRINK AND CHAT

605 MAIN STREET

PLUMBING

Coal and Gas Ranges, Roofing,

GAS MANTLES

N. B. BULL & SON,

Telephone 2048. 257 Asylum Street.

**CONNECTICUT TRUST and
SAFE DEPOSIT COMPANY**

Cor. Main and Pearl Sts., Hartford, Conn.

Capital \$300,000

Surplus \$400,000

Meigs H. Whaples, Prest.

Arthur P. Day, Secy.

John P. Wheeler, Treas.

Hosmer P. Redfield
Ass't Treas.

R. F. JONES,

.. General Building Contractor ..

Contracts Taken for all Manner
of Buildings.

36 Pearl Street - Hartford, Conn.

We have just received our Fall and
Winter goods, and would like to have
you look them over. Please call on our
representative at 123 Vernon St., who
has a fine line of samples to select from

M. PRESS & CO.,

College Tailors

MULCAHY'S

Hack, Cab and Baggage Express

Office, 54 Union Place

Telephone Connection

Directly Opposite
Depot

Lowest Prices in
the City

Headquarters for The Trinity Boys

Suppers and Banquets

Parson's Theatre Cafe

In Parson's Theatre

Telephone 803-3

THE GARDE,

Asylum and High Streets.

ENTIRELY NEW AND MODERN.

Conducted on the European and
American Plans.

AWNINGS, TENTS, FLAGS

Decorations of all kinds, also full
line of favors.

G. O. SIMONS,

Successors to SIMONS & FOX,
240 Asylum St.

For Nervous, Tired or Sick Headache, try

Pike's Infallible Headache Powders

Cure positively guaranteed.

PIKE'S DRUG STORES,

269 PARK STREET.

343 PARK STREET and 173 ZION STREET

ALFRED W. GREEN,

PORTABLE DROP LAMPS.

WELSBACH and ELECTRIC LIGHTS.

24 State Street, Open Evenings.

MORAN

896 Main Street

GYM GOODS

TRINITY PENNANTS

HATS AND FURNISHINGS

ALUMNI NOTES.

'59—A memorial service for the late
Dudley Buck '59 was held in the Church
of the Holy Trinity, Brooklyn, N. Y.
on the last day of October, where this
distinguished musician and composer
was organist and director for more than
a quarter of a century.

'70—The middle aisle of Christ
Church, New Haven, Conn., has been
paved in memory of the late Rector,
the Rev. Dr. George Brinley Morgan
'70 and his wife.

'84—The Rev. Edgar L. Sanford '84
made an address at the 150th anniversary
of St. George's Church, Schenec-
tady, N. Y. of which Bishop Williams
'35 was at one time rector.

'90—The Rev. John S. Little '90 was
a speaker at the recent meeting of the
Council of the First Missionary Depart-
ment in Hartford.

'95—The Rev. Charles D. Broughton
'95 spoke at Utica on the organization
of a congregation for the missionary
effort at a meeting of the Council of the
Second Missionary Department.

'96—W. S. Langford has been chosen
referee of the Yale-Harvard game at
Cambridge. Mr. Langford is now fourth
assistant secretary to the President of
the New York Central Railroad. He is
recognized as one of the most popular
football referees in the country.

'97—Under the pastorship of Rev.
Walton S. Danker '97, St. John's Parish
of Worcester, Mass., recently celebrated
the 25th anniversary of its foundation.

'03—The Rev. E. C. Thomas of Lan-
caster, N. H., visited college during the
past week.

'07—The engagement is announced of
Raymond Cunningham '07 to Miss Ruth
Reid of Redding Ridge, Conn.

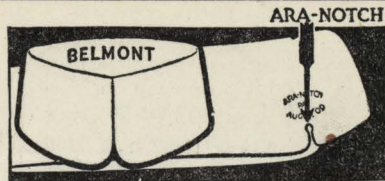
The following figures may be of in-
terest to prove that education always
pays. "Who's Who in America" con-
tains 9643 names. Of this number 6711
have had a college education or equal.
A generation ago, when the men who
are now so prominent were in college,
the college population was about one
in three hundred. Thus their numbers
entitled them to furnish 1/3 of one per
cent. of the successful men of the nation
while they actually furnished 69 per
cent. or 207 times as many successful
men as their numbers merited.

Continued from Page 1.

**PROSPECTS OF WESLEYAN
GAME.**

Durling, r. t.	1913	20	190	6.1
Wright, r. e.	1911	21	157	5.11
Pazetti, q. b.	1912	19	150	5.10
Reynolds, l. h. b. ...	1912	20	173	5.11
McCoffrey, r. h. b. .	1913	21	175	5.10
White, f. b.	1913	20	194	6.2
Rice, l. h. b.	1912	21	165	5.9
Boyd, r. e.	1910	19	167	5.11
Parkinson, r. g.	1913	20	188	6.1
Bacon, q. b.	1913	18	160	6.
Pettigru, f. b.	1913	19	170	5.11
Sutherland, l. e. ...	1911	20	160	5.11

The average weight of the regular
'varsity, the first eleven men in the
above list, is 183 pounds.



The "Ara-Notch" makes the "Belmont"

**an
ARROW
COLLAR**

Sit Perfectly

15c, 2 for 25c. Cluett, Peabody & Co., Makers
ARROW CUFFS 25 cents a pair

FIDELITY TRUST CO.

46 Pearl St.,

HARTFORD, CONN.

We do general Banking as well as all
kinds of Trust business We solicit ac-
counts from College Organizations and
Individuals.

LET US DO YOUR BANKING FOR YOU.

F. L. WILCOX, Pres't.
Trinity '80.

LOOMIS A. NEWTON,
Sec'y



Walter S. Schutz,
Trinity '94.

Stanley W. Edwards,
Yale, '00.

SCHUTZ & EDWARDS,
ATTORNEYS AND COUNSELLORS AT LAW.

642-5 Connecticut Mutual Building,
HARTFORD, CONN.

Telephone No. 1838.

Cotrell & Leonard

MAKERS OF

College Caps & Gowns

472 to 478 Broadway,

ALBANY, N. Y.



PRINTING

Office Supplies,
Carbon Papers,
Typewriters,
Typewriter Ribbons
and Supplies,
Loose Leaf Devices,
Computing Machines,
Etc.

Phone 812-2

**AMERICAN PRINTING
& SUPPLY CO.**

Talcott Bldg., 1003 Main St
HARTFORD, CONN.

Publishers of "THE TRIPOD."

**SOUTHPARK
DRUG STORE,**

115 Main St. cor. Park,
HARTFORD, CONN.

AN OPPORTUNITY FOR A FEW INVESTORS.

The 8% 10-Year Purchasing-Fund Gold Certificates

ISSUED BY

THE WHEEL-MOTOR TRACTION CO.

This company has the sales monopoly of an improved form of commer-
cial automobile, now in successful use by the U. S. Government and leading
business concerns. The \$25,000 accumulated by the sale of these certificates is
to be used for one purpose only—buying machines at the factory to fill orders.
The machines are then shipped C. O. D. to the purchasers. Thus there is no
credit risk, and the investors' money is neither tied up in equipment nor dis-
sipated by expenses, but is either in cash on hand or convertible thereto at
short notice.

Investors in this purchasing fund have the option of withdrawal of prin-
cipal before maturity. A strong National Bank has agreed to act as Trustee
of this fund for and on behalf of investors—to see that it is kept intact and
used only as a purchasing fund. This bank will pay dividends as they fall
due and will return to any certificate holder, upon sixty days' notice, the
amount of his investment or any part of it, should he desire to withdraw
same at any time before maturity.

The total issue is only \$25,000, each certificate being for \$25. For the
present, with each \$25 certificate is given one share of 8 per cent preferred
stock, par value \$10; and with each \$100 purchase five shares of preferred are
given. This unusual opportunity really brings the net return up to about 12
per cent, with the prospect of selling the preferred for nearly enough to pay
for the whole investment. We make this offer so that it will not be necessary
for this announcement to appear extensively, as previous issues have been
largely oversubscribed.

If interested in absolute security of principal, large and definite interest
return, and opportunity of speedy withdrawal of principal before maturity if
desired, this investment should receive your immediate attention. Communi-
cations and orders should be addressed, and checks made payable to,

The Wheel-Motor Traction Company

N. E. DISTRIBUTING PLANT ALLSTON DISTRICT, BOSTON, MASS.

We are prepared to offer permanent positions to six capable college
men, who can secure \$1,000 to be invested in the above. These positions
are open for either January or July 1st and will pay \$1,200 or more a year to
start, with prospects limited only by ability of the men.

The Connecticut Mutual Life Insurance Company,

HARTFORD, CONN.,

Why should I insure my life?

Because it is a debt you owe to those who are dependent upon your earnings for their support.

You admit that it is your duty to supply their needs from day to day, but forget that it is equally your duty to provide an ever ready and sufficient equivalent for your earning power, which your family stands in constant jeopardy to lose by your premature death.

Guard your family against disaster and yourself against dependency in old age.

When should I insure my life?

Now! The cost will never be less, and tomorrow you may not be able to obtain insurance at any price.

Even if others are not now dependent upon you, take time by the forelock and you will be the better able to meet future responsibilities, and at a smaller premium.

Where shall I insure my life?

In a purely Mutual Company.

In a company that earns, declares, and pays annual dividends.

In a company that is doing a conservative business.

Such a Company is The Connecticut Mutual Life Insurance Company of Hartford, Conn. It furnishes perfect protection at lowest cost.

For further information, address the Company, or any of its agents.

John M. Taylor, Pres't.

Henry S. Robinson, Vice-Pres't.

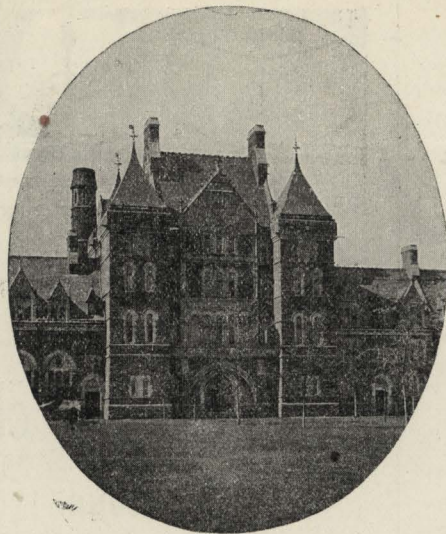
William H. Deming, Secy.

BOSTON LOAN CO.

Loans Money on
Diamonds and Jewelry.

It is the largest and the best place in the city, and charges the lowest rates of interest.

32 Asylum Street. Tel. 112-2



TRINITY COLLEGE

HARTFORD, CONNECTICUT

The Library contains about 56000 volumes, 30 per cent of which have been purchased within the last twelve years. It is open daily for consultation and study.

The Laboratories, Physical, Chemical, Biological, and Physico-psychological, are fully equipped with modern apparatus for work in these departments. Special attention is given to work in preparation for Electrical Engineering, Civil Engineering, Industrial Chemistry, and Medicine.

Extensive courses are offered for study in Mathematics, Ancient Languages, Modern Languages, Economics, History, Ethics, and Philosophy.

A large list of valuable scholarships and prizes may be found in the Annual Catalogue.

For Catalogues and information address the President or the Secretary of the Faculty.

COLLEGE DIRECTORY.

ATHLETIC ASSOCIATION—G. C. Capen, Pres.; S. P. Haight, Secy-Treas.

FOOTBALL—Joseph Groves, Mgr.; A. B. Henshaw, Capt.

BASEBALL—C. E. Sherman, Mgr.; A. M. Smith, Capt.

TRACK—G. T. Keyes, Mgr.; V. G. Burdick, Capt.

TRINITY TRIPOD—R. H. Merrill, Editor-in-Chief; A. Clark, Treas.

TRINITY IVY—C. E. Sherman, Editor-in-Chief; J. Porteus, Business Mgr.

SENATE—G. A. Capen, Pres.;

CLASS PRESIDENTS—1910, A. B. Henshaw; 1911, W. C. Skinner; 1912, G. T. Bates; 1913, C. H. Howell.

THE McCRUM-HOWELL CO.

MANUFACTURERS OF

"Richmond" Heaters That Heat

"Richmond" Radiators That Radiate

"Richmond" Enameled Ware That Wears

General Offices:

Park Ave. and 41st St.

NEW YORK.

FATIMA TURKISH CIGARETTES

20 for 15 cts.



THE college "Frat." Initiation. Plenty of bumps. Bully fellows. And after the skirmish Fatima Cigarettes.

That pleasant blend of Turkish tobacco, always the same, always satisfying.

The cigarette with the distinctly different taste. Mild, smooth and mellow.

THE AMERICAN TOBACCO CO.



Resources over FIVE Million Dollars

WE INVITE
YOUR ACCOUNT
BUSINESS OR
PERSONAL
LARGE OR
SMALL

AETNA
NATIONAL
BANK

NEXT DOOR
TO
HARTFORD
PUBLIC
LIBRARY

The Largest National Bank in Connecticut on the Honor Roll of 1908.



Cool, Comfortable, Durable, Well Made,
Coat Cut Undershirts
and
Knee Length Drawers
Bear This Red Woven Label



Take no substitute
The B. V. D. Company, New York.