

# The Trinity Tripod

VOL. V. NO. 3.

HARTFORD, CONN., FRIDAY, OCTOBER 2, 1908.

PRICE, FIVE CENTS.

## SOPHOMORES WIN.

**Annual Push Rush Awarded to 1911.**  
The annual Push Rush between the two under classes was held on Tuesday evening and resulted in a victory for the sophomores, although a fourth rush had to be held in order to decide the contest.

A few minutes before seven o'clock the seniors began marshaling the sophomores while the juniors did the same for their favorite class. There was much practicing on both sides, the 1911 men needing it as much as 1912. A little after the appointed time the two classes were posted opposite each other and the judges, Plant, '09, Maxson, '09, Xanders, '09, Hinkel, '09, Buchanan, '09 and Henshaw, '10, gave the word to go. As the two bodies came together under the arc-light there was hardly an inch given on either side, although both sides claimed the victory.

Before the second rush the sophomores changed their lines from five to four men to correspond to those of the freshmen. But in this rush some one in the sophomores' ranks stumbled, thereby breaking up their formation, and the victory easily belonged to the freshmen.

In the third rush the Sophs. became determined and when the two classes crashed before the lamp-post the freshmen quickly gave way. At this point 1911 had begun cheering for their victory when the judges announced that a fourth rush was necessary to determine the supremacy because of the first being a tie.

This last rush differed from the others in that the front lines, instead of going up, went down and there was a large pile of struggling bodies on the ground.

In these rushes the sophomores were led by Earl B. Ramsdell and the freshmen by L. H. McClure.

After the rushes the college body formed in a parade in the order of classes and after giving a cheer for President Luther, marched down to the Capitol grounds, the site of the old college, as is the custom, where "Neath the Elms" and "My Country 'Tis of Thee" were sung.

After this all proceeded to the festivities in Aetna Hall.

## FRESHMAN CAPS.

The committee appointed by the sophomore class to decide on the freshman caps has selected a dark blue cap with a square green button.

## RECENT FOOTBALL SCORES.

Yale 16, Wesleyan 0.  
Harvard 5, Bowdoin 0.  
Dartmouth 11, University of Vermont 0.  
Brown 35, Bates 4.  
University of Pennsylvania 30, Ursinus 0.

H. O. Hinkel, '09, has been appointed cheer leader for the game tomorrow.

## THE NEW FRESHMAN RULES.

The Class of 1911 Issues Its Commands.

1. Fail not to be prompt at all college meetings, sings and games. 2. Remember to salute all professors, grads. and men from the classes above you, on all occasions. 3. Except on the Sabbath you shall wear none other than the regulation freshman cap, and it shall not be defaced in any way. 4. See that you neither appear at Heub's. nor in a box at any theatre without a man from one of the classes above you. 5. Hold yourself in readiness to step off the board walk at the approach of a man from one of the classes above you. 6. Make not yourself conspicuous by wearing corduroy or khaki trousers; nor affect loud sox or neckties, nor afflict the eyes of the public with pipe, cane, or cigar. 7. All throwing of snowballs and water, calling out of rooms or windows, and sitting on the college fence is strictly forbidden. 8. Never wear school numerals or monograms; nor place any notices whatsoever on the bulletin board. 9. Finally, obey all men in the classes above you, and tend strictly to your own business.

## TRIPOD BOARD ELECTIONS.

The Tripod Board held its first meeting of the college year yesterday afternoon. The plans for the year were discussed and much interest and enthusiasm were shown.

There were several changes made in the various departments. Of these, probably the resignation of Paul M. Butterworth, '08, was the one that most affected the board. Too much cannot be said of Mr. Butterworth's devotion to the work of the Tripod. He was elected editor-in-chief in his junior year and devoted so much of his time to the paper that he slighted his studies and consequently has had to spend another year at college. After his junior year he was elected treasurer in which capacity he has served until now. He will be a great loss to the board although his position as treasurer will be well filled by Henry O. Peck, '09.

Other changes in the board were the advancements of Paul H. Barbour, '09, to circulation manager, and of William B. Gibson, '11, to assistant circulation manager.

In the editorial department, Alfred Howell, '11, was elected managing editor to fill the vacancy caused by the resignation of Gilbert Brown, '10, who has left college. And Harry K. Rees was elected to this department of the board as associate editor.

As yet there has been no room assigned to the Tripod for an office, however, one has been promised before the end of the week. There are many new men trying for the Board this year and as there are only a few men to be elected, there will be a great deal of rivalry for positions.

The Board is making every effort

## WORCESTER TECH TOMORROW.

Men All in Good Condition for the Game.

During the past week the football squad, which numbers thirty men, have been putting in some good, hard practice in preparation for the game with Worcester "Tech." which comes tomorrow afternoon. Scrimmages have taken place each day, beginning Monday. This has put most of the men into good condition.

Several new plays have been tried tried out successfully and with the old stand-bys of last year's effective team an excellent and varied line of play is the result.

It is almost impossible to say what the line-up in tomorrow's game will be as the men have been shifted continually in the past scrimmages. In all probability the following men will be in the opening game. Captain Henshaw and Maxson seem to be the men best fitted for the half-back positions, with F. Oliver and W. Buck able to play the positions if necessary. Xanders owing to fastness and past experience should land the full-back position. There can be no definite choice for quarter-back yet, though Backus and O. Gildersleeve seem to be the most promising candidates. A. L. Gildersleeve and Ramsdell will probably play the ends and for substitutes Burdick and Bassford are showing up well. George Buck and Carroll, two of last year's stars, have been playing the tackles this week. The center line positions seem to be the weak points. It will be necessary for every one trying for these positions to improve, or the line will be quite weak. P. Roberts, Snow, McElroy, Capen and A. Clark are the best fitted for the center and guard positions.

## PLANS FOR 1910 IVY.

As far as can be seen the 1910 Ivy is going to be a very successful issue. The board, with unusual promptness, has already begun to make its plans and there will probably be a great many changes in last year's methods. One plan, being made now, will certainly meet with the approval of everybody. This is, to have all the photographs taken at one place, thereby gaining general similarity of the prints.

The contract for the engraving has been let to the Electric City Engraving Co. of Buffalo.

## COLLEGE NOTES.

"Billy" Henshaw, ex-'09, has been visiting friends in college recently.

Thomas Myers, '07, has come back to college for a few days.

President Luther's father, who has been very ill at the president's home for some time, is gradually regaining his health.

to have a successful paper this year which will be of interest to both the alumni and the undergraduates.

## BRIDGE CELEBRATION.

Trinity's Part.

Plans for the Bridge Celebration next week are fast being completed and in these Trinity plays an important part both on account of the college and also of its president, Dr. Luther.

On next Tuesday, the most important day, President Luther will deliver a historical address in the evening. About noon there will be the civic parade in which the college body as a whole will take part. The undergraduate committee has discussed various plans for appearing in this and it will be talked over some more at the college meeting tonight. They have decided that if possible every student should wear blue hats with gold bands. Later in the day there are a great number of men who will take part in the historical pageant. While during all three days a great many of the ushers will be Trinity men.

The faculty are very desirous that the student body should take part in these exercises and to further this they have granted as holidays Tuesday morning and Wednesday and Thursday afternoons.

It is hoped that the men will show a lot of enthusiasm about this and begin by coming to the meeting tonight in Alumni Hall.

## PAPER BY PROFESSOR EDWARDS.

A paper on "Biometry as a Method in Taxonomy," by Professor Edwards, read at the Seventh International Zoological Congress, was published in the August number of the American Naturalist. As a reprint this paper becomes No. 7 of the contributions from the Biological Laboratory of the Department of Natural History.

## SCHEDULE OF LIBRARY HOURS.

Monday: 8.45 to 12.45, 1.45 to 4.45, and 7.30 to 10.  
Tuesday: 8.45 to 12.45, 1.45 to 4.45, and 7.30 to 10.  
Wednesday: 8.45 to 12.45 and 1.45 to 4.45.  
Thursday: 8.45 to 12.45, 1.45 to 4.45, and 7.30 to 10.  
Friday: 8.45 to 12.45, 1.45 to 4.45, and 7.30 to 10.  
Saturday: 8.45 to 12.45.  
Sunday: 7.30 to 10.

The "Tripod" is feeling complimented by the following extract from a letter received from Judge Joseph Buffington and it feels that if every alumni would exhibit the same spirit the "Tripod" would be an unqualified financial success:

"I congratulate you and the other men who are working on the Tripod upon the efficient service you are rendering the college. It is really a great shame that every member of the alumni of the college is not a subscriber to the paper. A Trinity man who does not take the Tripod is not worthy of his heritage."

# The Trinity Tripod

Published Tuesdays and Fridays  
in each week of the college year by  
students of Trinity College.

The columns of THE TRIPOD are at all times open to Alumni, Undergraduates and others for the free discussion of matters of interest to Trinity men.

All communications, or material of any sort for Tuesday's issue must be in the Tripod box before 10 p.m. on Monday; for Friday's issue before 10 a.m. on Thursday.

Subscribers are urged to report promptly any serious irregularity in the receipt of the Tripod. All complaints and business communications should be addressed to the Circulation Manager.

Entered as second class matter Nov. 29, 1904,  
at the Post Office, at Hartford, Conn.

W. H. Plant, 1909, editor-in-chief.

### Associate Editors.

L. G. Harriman, '09, athletic editor.

C. M. Butterworth, '09, alumni editor.

tor.

B. F. Yates, '11, managing editor.

Alfred Howell, '11, Joseph Graves,

'10, R. H. Merrill, '10.

### Business Department.

P. M. Butterworth, '08.

H. O. Peck, '09, treasurer.

Welles Eastman, '09, Adv. manager.

P. H. Barbour, '09, circulation manager.

W. B. Gibson, '11.

Subscription Price, \$2.00 Per Year.

Advertising Rates furnished on application.

Office, 10 Northam Towers.

## "NOW THEN—TRINITY!"

### EDITORIAL.

So far this year the student body has apparently not grasped the idea that it costs money to have athletics. The main means of support must come from the undergraduates. It costs but five dollars to be a member of the Athletic Association. This membership entitles one to admission, without extra charge, to all games; it also gives one the right to vote for all managers and other officers of the association. Up to date less than four per cent. of the students are members of the A. A. The first game comes Saturday with Worcester "Tech." It is necessary to have every man on the bleachers on that day and have some good cheering. Provided one is not a member of the A. A. he will have to pay the admission fee. Everyone should join the association sometime this term. It is better to do it now and get the full benefit of the privileges, than to wait. So by Saturday noon let there be at least one hundred men who are holders of season A. A. tickets.

At present there is a lack of sufficient men to make a strong second eleven. There are many men in college, especially freshmen, who are heavy enough to play football, who have not been out as yet in uniform. It is certainly up to every undergraduate who has any ability at all, no matter how meagre, to come out and help the second team along. Last year we had a very strong second team, which undoubtedly did more to develop a strong and effective 'varsity than anything else. Let it be the same this year. As we have only one coach this year, the second team must necessarily be neglected somewhat. But do not let this discourage anyone—just come out

and do your best. You will do the college good, the 'varsity eleven good, and feel better yourself.

### COLLEGE RUSHES.

The following extract from the Hartford Times is attracting some attention from college men:

Most college men took part in their time in college rushes, and in hazing to some extent. The exceptions are mostly among graduates of recent years in colleges which have stopped one or both practices or treated them so severely as to discourage all but the most enthusiastic students. Some colleges have succeeded in developing a feeling against both practices among the students themselves, and this is the best course of all. Some believe it to be also the most difficult. This last may have been accomplished at Cornell. At any rate it is announced that there will be no rushes this year. President Schurman has been thinking, especially since the season opened, and within a few days a student was fatally injured at the Worcester Polytechnic. He cut his vacation short, went back to Ithaca, and has held conferences with men in the upper classes. Apparently it is on agreements made at these conferences that he relies in announcing that rushing is at an end. He also declares that rushing is a "brutish exhibition," and certainly it is likely to turn into this if it is followed far. It is better organized than it was years ago and some accounts suggest that there is more loss of temper than used to be the case, and that too much has been borrowed from football practice. This is dangerous because a large part of every class are untrained and may be crippled or killed by what a seasoned player would bear without injury.

All this applies even if it is necessary that a freshman class should promptly come into some sort of physical collision with the other young gentlemen who were freshmen the year before. A game of ordinary football would not answer, because it is played by a limited number, but the old Rugby game could be used because it admits any number of players. There is men and for all others in ordinarily good condition. The risk is comparatively small and as the game is played under rules it is sure of efficient supervision.

room in it for strong practiced young But it is to be suspected that both classes would sooner give up the whole contest than adopt what they would call an old-fashioned school game, and that is probably the best solution possible. Where rushes are tolerated it becomes a point of honor for members of the two lower classes to attend, and this compels the presence of a number who are not physically adapted to that sort of contest. The feeling against it is growing stronger among the governing bodies of colleges and the once unthinkable idea that both rushing and hazing may at some time be actually abolished is becoming quite familiar.

There will be a college meeting in Alumni Hall this evening at 6:45 o'clock. Everyone is requested to be present promptly on time.

All those interested in the Musical clubs are requested to meet in Alumni Hall immediately after the college meeting tonight.

## Warm Underwear

(Good Shirts and Drawers)

Merino White, Fawn and Gray, 50c.  
Natural Merino Half Wool, 75c. ea.  
Winsted Merino Nat., White, \$1.00  
Winsted Worsted Yeager Shade, \$1.50  
Cartwright & Warner pure Australian wool, non-shrinkable, \$3.00  
UNION SUITS, Ecu or Grey, \$1.00  
Carter's Egyptian Cotton, \$1.50  
Merino Silver Grey 1/2 wool, \$2.50  
Finest Natural Gray Worsted, \$2.75

Let us fit you Gents to some of these comfortable garments.

**BROWN, THOMSON AND COMPANY.**

**F. L. PRICKETT,**

71 Asylum Street, Room 1.

PICTURE FRAMER AND DEALER,

25 years experience in framing, restoring and gilding.

Special attention given to shipping.

Send postal or telephone-167-3.

At College every Monday evening.

JUST UNDER THE ROXBURY.

**M. JACOBS,**

MAKER OF MEN'S CLOTHES

1078 CHAPEL ST.

NEW HAVEN, CONN.

TELEPHONE CONNECTION.

**F. M. Johnson**

Personal attention in photographic work in all its branches

STUDIO

1039 MAIN STREET

TELEPHONE 2363-4.

**When You Are Down Town**

looking for the fellows, you are sure to find some of them in

**March's BARBER SHOP**  
Connecticut Mutual Bldg

VIBRATION SHAMPOO  
MANICURE BY LADY ATTENDANT

**THE SISSON DRUG CO.**

CHEMICALS, DRUGS  
AND MEDICINES.

729 MAIN STREET



At Work or At Play, Loose Fitting

**B.V.D.**

Trade Mark Registered U. S. Patent Office.

Coat Cut Undershirts and Knee Length Drawers

will keep you cool and comfortable. 50c., 75c., \$1.00 and \$1.50 a garment. In cut, finish, workmanship, and material B. V. D.'s are unsurpassed. Identified by The B. V. D. Red Woven Label. Don't take a substitute.

**ERLANGER BROTHERS. NEW YORK.**

**THE BOARDMAN'S LIVERY STABLE**

INCORPORATED

**First Class Coach Service**

For Dances Receptions, Etc.

356-358 MAIN ST.

Telephone 930

All night coach service



**Eaton, Crane & Pike Company**

..Makers of High Grade..

Papers

and

**Society Stationery,**

PITTSFIELD, MASS.

**The Marwick Drug Co.**

Cor. Main and Asylum Sts.

Our Candy Corner offers special attractions

CIGARS AND CIGARETTES

Popular brands fresh from the makers.

SODA DEPARTMENT

Cold Soda, College Ices and Ice Cream Soda

Hot drinks now ready

All drinks made right—Served right

**Elmer B. Abbey, D. D. S.**

Room 77, Sage-Allen Bldg.

Office Hours

9 A. M. to 4 P. M.

**THE LINUS T. FENN CO.**

FURNITURE

Rugs Carpets, Draperies,

Novelties for Students Rooms

653 Main Street, cor. Gold.

**THE GARDE,**  
Asylum and High Streets.

ENTIRELY NEW AND MODERN.

Conducted on the European and American Plans.

**ILLUSTRATING.**  
THE A. PINDAR CORP.  
730 MAIN ST., HARTFORD, CT.  
HALF-TONE  
WOOD ENG. ZINC-ETCHING.  
ELECTROTYPING.

ALUMNI DEPARTMENT.

The first monthly meeting of the year of New York Alumni will be held on Monday evening, Oct. 5, at 7 p. m., at Keen's Chop House, 70 W. 36 St. A big crowd will be present so that you will be sure of meeting some of your friends. All Trinity men are welcome. This is the third year these successful, informal gatherings have been held. Have you been around? If not, it is time you come. A meeting on the first Monday of every month.

'75—Hon. Joseph Buffington, of the United States Circuit Court, for the eastern district of Pennsylvania, was one of the three judges in the suit of the federal government to enforce the commodities clause of the Hepburn railroad act against the anthracite coal carrying railroads of that state. The suit was dismissed, Judge Buffington, however, dissenting.

'80—The Rev. Theodore M. Peck has recently celebrated his silver wedding.

'94—At the commencement of Hobart College last June, the degree of Doctor of Divinity was conferred on the Rt. Rev. Robert L. Paddock.

'95—Frank Sumner Burrage was married to Miss Mary McClelland of Philadelphia on September 15.

'97—A. M. Langford umpired the game on Wednesday between Yale and Wesleyan.

'98—Albert M. Sturtevand, Ph.D., has been appointed instructor in German and Old Norse in the University of Kansas at Lawrence.

'01—Married, in Indianapolis, July 22, the Rev. George Graham Burbank and Miss Flora Koke-Miller.

'03—The Rev. Edmund C. Thomas has entered on the rectorship of St. Paul's Church, Lancaster, N. H.

'06—Harry Huett was in Hartford and visited the college last week before resuming his studies in Middletown.

'06—Geo. P. Pierce, who has been in Cambridge the last two years, has discontinued his law studies at Harvard, and has accepted a position in the insurance business in Billings, Montana.

"MR. BUSYBODY."

G. Safford Waters, '87, is making a name for himself as a writer of comic opera music. One of his latest pieces is the pretentious musical skit in one act, "Mr. Busybody," which goes on at Poli's this week. This piece has been changed from fourth to first place on the program and after a short stay in this city and Bridgeport will go to New York where it will have a run in some vaudeville house. This is said to be a rather extraordinary piece for vaudeville, as it carries besides Ed. Win some thirteen people and presents some good scenery and costumes. This piece is one of many written by Mr. Waters who while in college conducted the Glee club for two or three years and wrote some college music and is being seen by a great many Trinity men each day.

**Coe Bill**  
**\$2.50**  
**.. HAT ..**  
(None better for \$3.00)

**BRUCE, FILLEY & CO.,**  
DEALERS IN  
**Furniture, Carpets, Stoves.**  
Sole Agents for the Celebrated  
**MAGEE and HOUSEHOLD RANGES.**  
103 Asylum St., Hartford, Conn.  
TELEPHONE 1217-3.

**PLUMBING**  
Coal and Gas Ranges, Roofing,  
**GAS MANTLES**  
N. B. BULL & SON,  
Telephone 2048. 257 Asylum Street.

**CONNECTICUT TRUST and**  
**SAFE DEPOSIT COMPANY**  
Cor. Main and Pearl Sts., Hartford, Conn.  
Capital \$300,000 Surplus \$400,000  
Meigs H. Whaples, Pres. Arthur P. Day, Secy.  
John P. Wheeler, Treas. Hosmer P. Redfield,  
Ass't Treas.

**R. F. JONES,**  
**.. General Building Contractor ..**  
Contracts Taken for all Manner  
of Buildings.  
36 Pearl Street - Hartford, Conn.

**Plimpton Mfg. Co.,**  
262-4-6 Pearl St.  
**Stationers and Engravers,**  
College Stationery a Specialty.

**BOSTON LOAN CO.**  
Loans Money on  
**Diamonds and Jewelry.**  
It is the largest and the best place in  
the city, and charges the lowest rates of  
interest.  
32 Asylum Street. Tel. 112-2

**BELKNAP & WARFIELD,**  
Booksellers and Stationers,  
77 and 79 Asylum Street,  
HARTFORD, CONN.

**Diamonds,**  
**Jewelry and Wedding Gifts.**  
**C. H. CASE & CO.,**  
851 Main St., Opp. State St.

**DO AS THE OTHERS DO**  
Buy your Drugs, Medicines, Candies,  
Smoking Articles, Etc., at  
Blenstock's Jefferson Pharmacy,  
990 Broad St. Post-Office Station 11.

**REGAL SHOES**  
**Chamberlin & Shaughnessy,**  
**OUTFITTERS,**  
65 to 73 Asylum Street.

For Nervous, Tired or Sick Headache, try  
**Pike's Infallible Headache Powders**  
Cure positively guaranteed.  
**PIKE'S DRUG STORES,**  
269 PARK STREET,  
343 PARK STREET and 173 ZION STREET

**ALFRED W. GREEN,**  
**PORTABLE DROP LAMPS.**  
**WELSBACH and ELECTRIC LIGHTS.**  
24 State Street, Open Evenings.

**Class Teams**  
'Varsity Players are usually recruited from the ranks of the Class Team. If you have 'Varsity ambitions, get accustomed to 'Varsity togs. If you are training for a Catcher's position buy a



**Reach**  
**CATCHERS' MITT**

The Reach Trade-mark on all Sporting Goods is a guarantee of quality—it means a new article or your money back (except on Balls and Bats under \$1.00).

—if you want a fielding position, buy a REACH FIELDERS' GLOVE. With either you possess the real thing—the kind that the big League players use. 25 cents to \$8.00.

The REACH OFFICIAL AMERICAN LEAGUE BALL is used by all the big teams—practice with it—get used to it. It's the official ball of the American League. Used in all Intercollegiate games.

The REACH OFFICIAL BASE BALL GUIDE for 1908 will post you on the new rules—schedules of Leagues—scores of games, etc. Also contains history and photos of 1907 World's Series. 10 cents at dealers', or by mail. If not at your dealer's, we will supply our goods direct on receipt of price. Ask for our 1908 Base Ball Catalogue—FREE.

A. J. REACH CO., 1803 Tullip Street, Philadelphia

**BRIGHTON** FLAT CLASP GARTERS



The grasp of the clasp is easy. It's flat—the only absolutely flat clasp garter is the Brighton. Millions of men know this—buy them and wear them. The wear is there, and they cost only a quarter a pair. Remember it.

Brightons are made of pure silk web. The patterns are new, exclusive—variety enough to satisfy everybody. All metal parts are of heavy nickel-plated brass. If your dealer can't supply you, a pair will be sent upon receipt of price.

PIONEER SUSPENDER CO., 718 MARKET ST., PHILADELPHIA  
MAKERS OF PIONEER SUSPENDERS

*You can fill it with your eyes shut*



Conklin's Self-Filling Pen is the best fountain pen for both student and professor on account of the Crescent-Filler. To fill simply dip it in any ink and press the Crescent-Filler—that's all. No dropper—no inky fingers—no ruffled temper. Guaranteed to be a perfect writer.

Leading dealers handle the Conklin. If yours does not, order direct. Refuse substitutes. Send for handsome new catalog.

**Conklin's** SELF-FILLING **Fountain Pen**

THE CONKLIN PEN CO.  
310 Manhattan Building, TOLEDO, OHIO

**FIDELITY TRUST CO.**  
46 Pearl St.,  
HARTFORD, CONN.

We do general Banking as well as all kinds of Trust business. We solicit accounts from College Organizations and Individuals.

LET US DO YOUR BANKING FOR YOU.

F. L. WILCOX, Pres't. LOOMIS A. NEWTON, Sec'y  
Trinity '80.

J. A. WALES, '01.  
**MORRIS & WALES**  
MW  
"Something Different" in Magazine Trade-paper and Circular Advertising  
PROVIDENT BUILDING PHILADELPHIA

**We're Always Studying**

the subject of  
**Clothes, Hats, and Outfittings for Men**

**Come and see the result**

**HORSFALL & ROTHSCHILD**  
93-99 ASYLUM ST. HARTFORD  
IT PAYS TO BUY OUR KIND

HEADQUARTERS FOR DECORATING  
**COLLEGE BANNERS**  
**FELT PENNANTS**  
MADE BY EXPERTS  
**G. O. SIMONS,**  
Successor to Simons & Fox,  
240 ASYLUM ST.

**T. C. HARDIE,**  
**CAFE AND PACKAGE STORE,**  
283-287 Park St.  
Nearest Package Store to the College.

**GRAVES, DRUGS!**  
Cor. Main & Park Sts.

## The Connecticut Mutual Life Insurance Company,

HARTFORD, CONN.,

### Why should I insure my life?

Because it is a debt you owe to those who are dependent upon your earnings for their support.

You admit that it is your duty to supply their needs from day to day, but forget that it is equally your duty to provide an ever ready and sufficient equivalent for your earning power, which your family stands in constant jeopardy to lose by your premature death.

Guard your family against disaster and yourself against dependency in old age.

### When should I insure my life?

Now! The cost will never be less, and to-morrow you may not be able to obtain insurance at any price.

Even if others are not now dependent upon you, take time by the forelock and you will be the better able to meet future responsibilities, and at a smaller premium.

### Where shall I insure my life?

In a purely Mutual Company.  
In a company that earns, declares, and pays annual dividends.  
In a company that is doing a conservative business.

Such a Company is The Connecticut Mutual Life Insurance Company of Hartford, Conn. It furnishes perfect protection at lowest cost.

For further information, address the Company, or any of its agents.

JOHN M. TAYLOR, Pres't.  
HENRY S. ROBINSON, Vice-Pres't.  
WILLIAM H. DEMING, Secy.

## The General Theological Seminary, Chelsea Square, New York.

The Academic Year begins on Wednesday, the first Ember Day in September.

Special Students admitted and Graduate course for Graduates of other Theological Seminaries.

The requirements for admission and other particulars can be had from

The VERY REV. WILFORD H. ROBBINS, D. D., LL. D., DEAN.

### THE COLLEGE MAN'S OPPORTUNITY.

We offer the *surest means* of finding your right place. Hundreds of good positions open in business, in teaching and in technical work. Offices in twelve cities. Write us to-day. HAPGOODS, The National Organization of Brain Brokers, Hartford Bldg., Chicago.

**LYMAN R. BRADLEY**  
CIGARS,  
PIPES,  
Smokers' Articles  
436 Asylum Street.

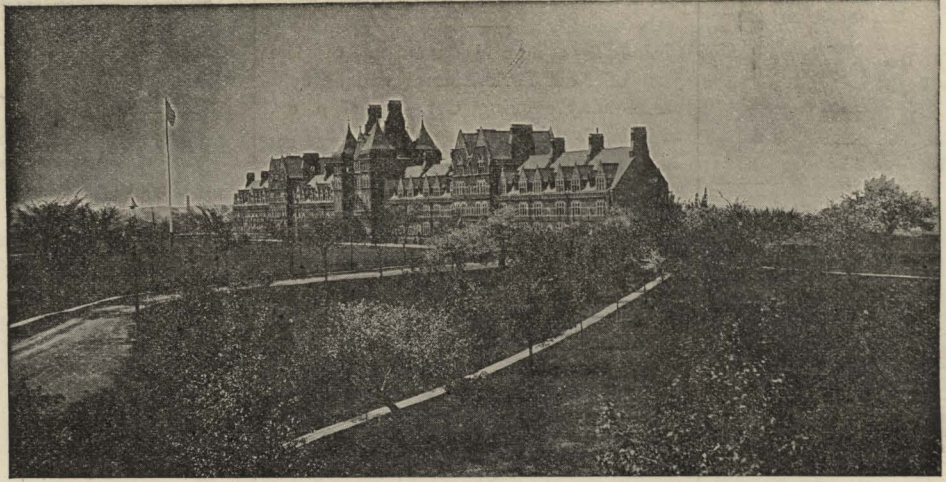
## The Ward Printing Co.

336 Asylum Street.

Hartford, Connecticut.

Printers of The Tripod.

# TRINITY



# COLLEGE

The largest of the Trinity College Buildings, shown in this cut, includes the principal Dormitories, the Chapel, the Library, and some of the Lecture Rooms. Other buildings are the Jarvis Laboratories, the Boardman Hall of Natural Science, the Observatory and the Gymnasium.

The Laboratories are fully equipped for work in Chemistry, Natural History, Physics, Experimental Psychology, and in preparation for Electrical Engineering. The Library is at all times open to students for study. A School of Civil Engineering offers complete preparation for professional work.

For Catalogues, etc., Address the Secretary of the Faculty, Trinity College, Hartford, Conn.

### COLLEGE DIRECTORY.

Athletic Association—Pres., H. I. Maxson; Sec.-Treas., Sturges Harmon.

Football—Mgr., J. S. Carpenter, Jr.; Captain, A. B. Henshaw.

Baseball—Mgr., H. S. Marlor; Captain, I. L. Xanders.

Track—Mgr., C. B. Judge; Captain, H. I. Maxson.

Musical Organizations—Pres., H. C. Goodrich; Business Mgr., W. H. Plant.

Trinity Tablet—Editor-in-chief, R. L. Wright; Business Mgr., L. J. Dibble.

Trinity Tripod—Editor-in-chief, W. H. Plant; Treasurer, P. M. Butterworth.

Trinity Ivy—Editor-in-chief, R. L. Wright; Business Mgr., Joseph Groves.

Missionary Society—President, Paul Roberts.

German Club—Pres., J. S. Carpenter, Jr.; Sec.-Treas., R. H. Merrill.

Class Presidents—1909, W. H. Plant; 1910, W. F. MacElroy; 1911, C. E. Sherman; 1912, L. H. McLure.

## Meadville Theological Seminary.

MEADVILLE, PENNSYLVANIA.

The Automatic Cashier Co.

HARTFORD, CONN.

IRVING R. KENYON,  
Gen'l Manager

## Resources over FIVE Million Dollars

WE INVITE  
YOUR ACCOUNT  
BUSINESS OR  
PERSONAL  
LARGE OR  
SMALL

**AETNA  
NATIONAL  
BANK**

NEXT DOOR  
TO  
HARTFORD  
PUBLIC  
LIBRARY

The Largest National Bank in Connecticut on the Honor Roll of 1907.



**1 CENT IS ALL IT WILL COST YOU** to write for our big FREE BICYCLE catalogue showing the most complete line of high-grade BICYCLES, TIRES and SUNDRIES at PRICES BELOW any other manufacturer or dealer in the world.

**DO NOT BUY A BICYCLE** from anyone, or on any kind of terms, until you have received our complete Free Catalogues illustrating and describing every kind of high-grade and low-grade bicycles, old patterns and latest models, and learn of our remarkable LOW PRICES and wonderful new offers made possible by selling from factory direct to rider with no middlemen's profits.

**WE SHIP ON APPROVAL** without a cent deposit. Pay the Freight and allow 10 Days Free Trial and make other liberal terms which no other house in the world will do. You will learn everything and get much valuable information by simply writing us a postal.

We need a **Rider Agent** in every town and can offer an opportunity to make money to suitable young men who apply at once.

**\$8.50 PUNCTURE-PROOF TIRES ONLY \$4.80 PER PAIR**

Regular Price \$8.50 per pair.  
To Introduce We Will Sell You a Sample Pair for Only **4.80**

NAILS, TACKS OR GLASS WON'T LET OUT THE AIR

(CASH WITH ORDER \$4.55)

NO MORE TROUBLE FROM PUNCTURES.

Result of 15 years experience in tire making. No danger from THORNS, CACTUS, PINS, NAILS, TACKS or GLASS.

Serious punctures, like intentional knife cuts, can be vulcanized like any other tire.

Two Hundred Thousand pairs now in actual use. Over Seventy-five Thousand pairs sold last year.

**DESCRIPTION:** Made in all sizes. It is lively and easy riding, very durable and lined inside with a special quality of rubber, which never becomes porous and which closes up small punctures without allowing the air to escape. We have hundreds of letters from satisfied customers stating that their tires have only been pumped up once or twice in a whole season. They weigh no more than an ordinary tire, the puncture resisting qualities being given by several layers of thin, specially prepared fabric on the tread. That "Holding Back" sensation commonly felt when riding on asphalt or soft roads is overcome by the patent "Basket Weave" tread which prevents all air from being squeezed out between the tire and the road thus overcoming all suction. The regular price of these tires is \$8.50 per pair, but for advertising purposes we are making a special factory price to the rider of only \$4.80 per pair. All orders shipped same day letter is received. We ship C.O.D. on approval. You do not pay a cent until you have examined and found them strictly as represented.

We will allow a cash discount of 5 per cent (thereby making the price \$4.55 per pair) if you send FULL CASH WITH ORDER and enclose this advertisement. We will also send one nickel plated brass hand pump and two Sampson metal puncture closers on full paid orders (these metal puncture closers to be used in case of intentional knife cuts or heavy gashes). Tires to be returned at OUR expense if for any reason they are not satisfactory on examination.

We are perfectly reliable and money sent to us is as safe as in a bank. Ask your Postmaster, Banker, Express or Freight Agent or the Editor of this paper about us. If you order a pair of these tires, you will find that they will ride easier, run faster, wear better, last longer and look finer than any tire you have ever used or seen at any price. We know that you will be so well pleased that when you want a bicycle you will give us your order. We want you to send us a small trial order at once, hence this remarkable tire offer.

**COASTER-BRAKES,** built-up-wheels, saddles, pedals, parts and repairs, and everything in the bicycle line are sold by us at half the usual prices charged by dealers and repair men. Write for our big SUNDRY catalogue.

but write us a postal today. **DO NOT THINK OF BUYING A DO NOT WAIT** bicycle or a pair of tires from anyone until you know the new and wonderful offers we are making. It only costs a postal to learn everything. Write it NOW.

**MEAD CYCLE COMPANY, Dept. "JL" CHICAGO, ILL.**



Notice the thick rubber tread "A" and puncture strips "B" and "D," also rim strip "H" to prevent rim cutting. This tire will outlast any other make—SOFT, ELASTIC and EASY RIDING.