

# The Trinity Tripod

HARTFORD,  
CONN.

College Library.

VOL. IV. No. 16.

HARTFORD, CONN., FRIDAY, NOVEMBER 22, 1907.

PRICE, FIVE CENTS.

## OFF FOR HAVERFORD.

### Twenty Men in Trinity Squad.

To-morrow Trinity closes the 1907 football season with the game with Haverford at Haverford. This is the second most important game on the schedule, for until the recent resumption of athletic relations with Wesleyan, Trinity has considered the Pennsylvania institution its chief rival. This has been fostered by the fact that in recent years, previous to last fall, the two teams had met twice on the gridiron and each had carried off the victory once, while last year's memorable game resulted in a tie, 0 to 0.

There is a general feeling of confidence as to the result to-morrow, although it is fully appreciated that the opponents have a very strong team, and can always be depended upon to put up a hard struggle.

Captain Donnelly's team is in nearly perfect physical condition, and unless something unexpected happens, it would certainly seem that the victory should come to Trinity. The squad left at 12:25 o'clock to-day and will spend the night at Haverford. It is expected that a number of Trinity supporters will attend the game, as there are a good many alumni residing in or near Philadelphia, and some of the musical club men, who will give a concert in Brooklyn to-night, will also go on to Haverford.

The probable line-up will be as follows:—

Haverford		Trinity
Sharpless,	le	Gildersleeve
Miller,	lt	Carrol
Wright,	lg	George Buck
Spaeth,	c	Thaxter
Emlen,	rg	Grosvenor Buck
Ramsey,	rt	Donnelly, (c)
Leonard,	re	Ramsdell
Myers,	qb	Pond
Brown, (c)	lhb	Maxson
Bard,	rhb	Henshaw
Edwards,	fb	Xanders

In comparing the teams before the game it may be interesting to print their previous scores of this season.

Haverford vs. Medico-Chi	24-5
Haverford vs. Delaware	12-0
Haverford vs. N. Y. U.	22-0
Haverford vs. Ursinus	6-0
Haverford vs. Lehigh	12-4
Haverford vs. Rutgers	6-5
Haverford vs. Franklin & Marshall	0-4

82-18

Trinity vs. Worcester Tech.	26-0
Trinity vs. West Point	0-12
Trinity vs. Amherst	0-11
Trinity vs. Wesleyan	5-0
Trinity vs. C. C. N. Y.	94-0
Trinity vs. Stevens	29-6
Trinity vs. Union	46-5

200-34

The comparative scores therefore seem to favor Trinity as we not only have a better total, but have also played stronger teams; but it is only too true that these often prove worthless as bases of comparison of the relative strength of two teams.

## PRES. LUTHER TALKS TWICE IN MIDDLETOWN.

### Will be in New York Over Sunday.

President Luther left yesterday morning for Middletown to attend the annual meeting of the trustees at the Girls' Industrial School of that city. Dr. Luther is president of this institution and has done much to further it toward success.

He preached in the evening of the same day at the Berkeley Divinity School and arrived back in Hartford at nine in the evening.

Saturday he expects to go to Brooklyn, N. Y., where he will speak in the evening at a meeting of Trinity College alumni at the University Club. Sunday he will preach at the Church of the Messiah and will return once more to this city on Monday morning. While at Brooklyn, he expects to be a guest at the home of Dr. Hubbard of the class of 1888.

## PRIZE EXAMINATIONS.

The schedule for the prize examinations to be held in May, 1908, by the Association for Promoting the Interests of Church Schools, Colleges, and Seminaries, is as follows:—

Mathematics.  
Freshmen and Sophomores.  
(Four hours.)  
Algebra. Theory of quadratic equations, binomial theorem, elementary discussion of series, logarithm, and permutation and combination.

Analytical Geometry. The straight line and the elementary properties of the conic sections.

Juniors and Seniors.  
(Four hours.)

Calculus. The differential and integral calculus, including its elementary applications to mechanics and other parts of physics.

English.  
Freshmen and Sophomores.  
(Four hours.)

Candidates will be examined on the general history of English Literature. The questions will require a knowledge of Pancoast's "Introduction to English Literature," (Holt & Co.), or Moody & Lovett's "History of English Literature," (Scribners).

Candidates should also submit an essay of not less than 2,500 words on the life and works of an English author.

Juniors and Seniors.  
(Four hours.)

Candidates will be examined on Shakespeare's "Hamlet," "Romeo and Juliet," "Anthony and Cleopatra," "Henry IV," (part 1) and "The Tempest."

Candidates should also submit an essay of not less than 3,000 words dealing with some subject of literary or linguistic interest connected with Shakespeare's plays.

The requirements for the examinations in Greek and Latin will be published in a later issue.

## EXPERIMENTAL PLANT.

### Erected by W. MacA. Johnson.

Considerable interest has been aroused about college concerning the erection of a new frame building on the south side of the athletic field, facing Broad street. This building is being erected by W. MacA. Johnson '98, an expert in metallurgy, in which to carry out experimental work in the testing of copper and zinc ore. From five hundred to a thousand pounds of ore a day will be tested. Although the plant will at first be a small one it will probably be enlarged and merged into the property of the Steel Corporation.

## MUSICAL CLUBS CONCERT.

The Mandolin and Glee Clubs give their first concert of the season to-night in the Church of the Messiah, Brooklyn, N. Y. The following program will be rendered:—

Part I.  
"Neath the Elms," Glee Club  
"Gartland March," Mandolin Club  
College Songs,  
"Clementine,"  
"In Absence,"  
"Wake, Freshman, Wake,"

Glee Club  
Baritone Solo—Selected,  
H. N. Chandler '09  
"Trinity True," Musical Clubs

Part II.  
"Dreamer Waltz," Mandolin Club  
Quartet—

Messrs Carpenter '09, Harmon '10,  
Chandler '09 and Skilton '08.

"Huzza," Glee Club  
"Second Regiment March,"

Mandolin Club  
"Trinity Marching Song,"

Combined Musical Clubs  
The following members of the clubs went to Brooklyn on the train leaving Hartford at 12:25 o'clock to-day:—  
Glee Club—Bunnell '11, Carpenter '09, Chandler '09, Elwell '09, Goodrich '09, Harriman '09, Harmon '10, R. M. Nelson '11, P. Roberts '09, Skilton '08, Stansfield '10, Stevens '08.

Mandolin Club—Bunnell '11, Butterworth '09, Carpenter '09, Corbett '08, Creedon '09, Cross '08, McGinley '09, Phillips '08, Pitts '11, Randall '08, Stansfield '10, Webster '10.

After the concert a dance and reception will be given to the members of the two clubs.

Concerts will be given at some time in the near future in Rockville, Bloomfield and Philadelphia. The quartet will go to Boston to represent the Glee Club at the dinner of the Boston Alumni Association early in December.

## NEXT DELTA KAPPA EPSILON CONVENTION.

The 62d annual convention of the fraternity of Delta Kappa Epsilon will be given next year in Hartford under the auspices of the Yale and Trinity chapters of the fraternity. All the exercises will be held in Hartford.

## COLLEGE CALENDAR.

Friday, Nov. 22—Musical Clubs concert at Brooklyn, N. Y. Lecture by Prof. W. F. Brooks in Alumni hall, subject, "Comets and Meteors."

Saturday, Nov. 23—Football, Trinity vs. Haverford, at Haverford.

Sunday, Nov. 24—9:15 a. m., morning service in chapel. 5 p. m., vesper service in chapel.

Monday, Nov. 25—7:30 p. m., Philosophy V., Seminar at the home of Dr. Urban. 9:45 a. m., test in Economics I.

Tuesday, Nov. 26—7:15 p. m., Glee Club rehearsal. 4 p. m., underclass football game.

## COLLEGE NEWS.

Bern Budd '08 and Carrol M. Robertson '10 have returned from Louisville, Ky., where they have been attending the annual convention of the Delta Kappa Epsilon fraternity.

J. E. Goodrich, Cornell '05, has been visiting his brother H. C. Goodrich '09 for a few days.

A representative of the South End Studio, Washington street, Boston, has been around college for the last few days, taking pictures of the classes of 1908, 1909 and 1911. He also photographed the football team, the college buildings and the student body.

## FOOTBALL PICTURES.

The football team and squad had their pictures taken last Tuesday afternoon on the campus. The photograph was made in the latest style of panorama pictures, showing each figure distinctly and clearly. The names of both the team and squad follow:—

'Varsity—Thaxter, George Buck, Grove Buck, Carroll, Ramsdell, Gildersleeve, Mason, Collins, Budd, Pond, Batterson, Maxson, Henshaw, Xanders, Donnelly, captain; Landefeld, coach, and Morris, manager.

The squad picture contained all the 'varsity players and Nelson, Woodlee, Snow, Gott, Draper, D. Clark '11, Backus, Roberts, Bassford, Buck '11, Eaton, McElroy, and Carpenter, assistant manager.

## CLASS PICTURES.

The seniors, juniors, and freshmen have had their class pictures taken, which, when completed, should be very satisfactory. They have all adopted the panorama style, which, being something rather new in the way of class pictures, seems to have taken everyone's fancy. The prints will be comparatively moderate in price and will be ready within a week.

Professor Underwood of Columbia, who became insane Saturday and tried to kill his family and then committed suicide, had not lost his property, as he imagined.



# Trinity Tripod

Published Tuesdays and Fridays  
in each week of the college year by  
students of Trinity College.

The columns of THE TRIPOD are at all times open to Alumni, Undergraduates and others for the free discussion of matters of interest to Trinity men.

All communications, or material of any sort for Tuesday's issue must be in the Tripod box before 10 p.m. on Monday; for Friday's issue before 10 a.m. on Thursday.

Subscribers are urged to report promptly any serious irregularity in the receipt of the Tripod. All complaints and business communications should be addressed to the Circulation Manager.

Entered as second-class matter Nov. 29, 1904,  
at the Post Office, at Hartford, Conn.

W. R. CROSS 1908, Editor-in-Chief.

## ASSOCIATE EDITORS.

H. N. Chandler '09, W. G. Hamersley '09.  
L. G. Harriman '09, Athletic Editor.

C. M. Butterworth '09, Alumni Editor.  
Welles Eastman '09, Gilbert Brown '10.

## BUSINESS DEPARTMENT.

P. M. Butterworth '08, Advertising.

H. O. Peck '09, Circulation.

P. H. Barbour '09, W. H. Plant '09.

Subscription Price, \$2.00 Per Year.

Advertising Rates furnished on application.

Office, 10 Northam Towers.

"NOW THEN—TRINITY!"

## EDITORIAL.

The facts brought to light at the recent college meeting to discuss the Tablet are worthy of comment from two points of view. In the first place, it is inconceivable that a magazine of such a reputation and standing as the Tablet has had should be allowed to have its existence jeopardized. Ever since its foundation it has served as a first medium of literary expression for Trinity men who have since won no mean fame in the world of letters. The only consistent action for Trinity men is to support the Tablet unreservedly. Just because you take the Tripod, or your roommate does, you need not think you have done your part. Every room in college should hand in two subscriptions to the Tablet. It is perhaps more economical to "sponge" a fourth hand copy, and hand it on down, but that is not the spirit to show.

On the other hand, may it not be possible that the very greatness of the Tablet's past has fostered the opinion among the men in college, and particularly the board, that no one need overwork himself or run any particular risk? Perhaps we are a bit too proud of the fact that the Tripod has made its way to its present position in spite of tremendous sacrifice on the part of the members of the board and even a personal loss on the part of the treasurer of the Tripod. It is this spirit that makes a paper or magazine.

## PROF. KLEENE ON THE FINANCIAL CRISIS.

Tuesday evening a meeting of the Hartford Chapter, American Institute of Bank Clerks, was held in the chapter rooms in the Phoenix National Bank Building and was the occasion of two interesting addresses on the financial situation of the country. Professor G. A. Kleene of Trinity College was one of the speakers.

## STRYKER STRIKES.

President Stryker of Hamilton College is out with a caustic statement in which he strikes a blow at certain colleges and universities which he maintains are able to gain athletic prowess merely because they are financially able to engage paid athletes. President Stryker expressed his solicitude for the future of football, and continued:—

"If intercollegiate games are to swamp intracollegiate games let us choose the latter. It is considered a supreme act of condescension to play with teams which have bought in the open market part of their strength. The students of that institution are not to blame. The fault lies at the door of the college president. It is not enough for him to claim ignorance of such dealings, but he must make at least an earnest trial to do away with it."

## RECEPTION FOR COACH LANDEFELD.

Many Students Visit Phi Gamma Delta House Last Evening.

A large number of members of the student body and several of the faculty were present last night at a reception given by the Tau Alpha chapter of Phi Gamma Delta to J. Clinton Landefeld, the coach of the football team. During the evening, which was rendered very enjoyable by singing and the friendly discussion of college topics, all took opportunity to greet Coach Landefeld and not a few were the congratulations extended to him on the success of this year's football team for which he has been in a large way responsible.

Immediately after the Haverford game, which is the final game of the season, Coach Landefeld will go to his home in Pottsville, Pennsylvania where he will take an engineering position at the mines of the Philadelphia and Reading Mining Company.

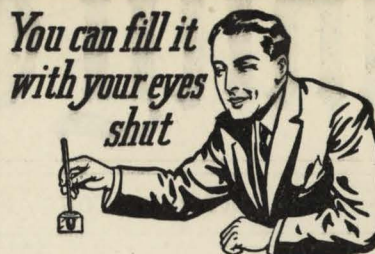
## TORREY AT HAVERFORD.

Haverford, Nov. 18.—Owing to the rainy weather the Haverford College football team was given a light practice this afternoon. There was no signal practice, the most of the afternoon being spent in mere exercise. Toward the close of the day's work Coach Torrey, of Pennsylvania, who spent the afternoon at Haverford, gave the line men a few pointers in defensive work.

The team has been playing loose football for the past two weeks and more or less deserved the defeat on Saturday at the hands of Franklin and Marshall. In order to get the men out of this slump Coach Haines has planned a hard program for the week.

The team played a magnificent game in the early part of the season and if it can get back to this old standard for Saturday's game with Trinity despite the poor showing of the last two weeks, the season will end victoriously, even though the New England team has a good record and is playing a first class game.

At Williams the football advisory committee has distributed circulars regarding the securing of desirable preparatory school athletic material and urging alumni and especially undergraduates to co-operate in getting such men to come to Williams.



Conklin's Self-Filling Pen is the best fountain pen for both student and professor on account of the Crescent-Filler. To fill

## Conklin's Self-Filling Fountain Pen

simply dip it in any ink and press the Crescent-Filler—that's all. No dropper—no inky fingers—no ruffled temper. Guaranteed to be a perfect writer.

Leading dealers handle the Conklin. If yours does not, order direct. Refuse substitutes. Send for handsome new catalog.

THE CONKLIN PEN CO.

310 Manhattan Building, TOLEDO, OHIO

## F. L. PRICKETT,

71 Asylum Street, Room 1.

PICTURE FRAMER AND DEALER.

25 years experience in framing, restoring and gilding.

Special attention given to shipping.

Send postal or telephone-167-3.

At College every Monday evening.

JUST UNDER THE ROXBURY.

## M. JACOBS,

MAKER OF MEN'S CLOTHES

1078 CHAPEL ST.

NEW HAVEN, CONN.

TELEPHONE CONNECTION.

## J. M. Johnson

Personal attention in photographic work in all its branches

STUDIO

1039 MAIN STREET

TELEPHONE 228-6

## When You Are Down Town

looking for the fellows, you are sure to find some of them in

## March's BARBER SHOP

Connecticut Mutual Bldg

VIBRATION SHAMPOO

MANICURE BY LADY ATTENDANT

## THE SISSON DRUG CO.

CHEMICALS, DRUGS  
AND MEDICINES.

729 MAIN STREET

Christmas will be here  
before you  
know it

and a  
Waterman's  
Ideal  
Fountain Pen

will happily solve  
many of your  
gift prob-  
lems

The  
desires of  
everybody  
can be satis-  
fied. Perfect  
make and quality.  
In many designs  
with a wide range  
of Gold Pen Points.  
Prices to please all.  
Sold by best dealers.

LEW Waterman Co. 173 Broadway, N.Y.  
SCHOOL ST. BOSTON 209 STATE ST. CHICAGO  
100 ST. JAMES ST. MONTREAL  
742 MARKET ST. SAN FRANCISCO  
12 GOLDEN LANE LONDON E.C.

## THE BOARDMAN'S LIVERY STABLE

INCORPORATED

First Class Coach Service

For Dances Receptions, Etc.

356-358 MAIN ST.

Telephone 930

All night coach service



## Eaton - Hurlbut Paper Company

..Makers of High Grade..

Papers

and

Society Stationery,

PITTSFIELD, MASS.

## The Marwick Drug Co.

Cor. Main and Asylum Sts.

Our Candy Corner offers special attractions

CIGARS AND CIGARETTES

Popular brands fresh from the makers.

SODA DEPARTMENT

Cold Soda, College Ices and Ice Cream Soda

Hot drinks now ready

All drinks made right—Served right

Elmer B. Abbey, D. D. S.

Room 77, Sage-Allen Bldg.

Office Hours

9 A. M. to 4 P. M.

## THE LINUS T. FENN CO.

FURNITURE

Rugs, Carpets, Draperies,

Novelties for Students Rooms

653 Main Street, cor. Gold.

## THE GARDE,

Asylum and High Streets.

ENTIRELY NEW AND MODERN.

Conducted on the European and American Plans.

## ILLUSTRATING.

THE A. PINDAR CORP.  
730 MAIN ST. HARTFORD, CT.

HALF-TONE  
WOOD ENG. ZINC-ETCHING.  
ELECTROTYPING.



# Coe Bill \$2.50 .. HAT ..

(None better for \$3.00)

If you are in need of Fall or Winter suits call on our representative at 34 Jarvis Hall who has a fine line of samples to select from.

**M. PRESS & CO.,**  
College Tailors

**PLUMBING**  
Coal and Gas Ranges, Roofing,  
**GAS MANTLES**  
**N. B. BULL & SON,**  
Telephone 2048. 257 Asylum Street.

**CONNECTICUT TRUST and**  
**SAFE DEPOSIT COMPANY**  
Cor. Main and Pearl Sts., Hartford, Conn.  
Capital \$300,000 Surplus \$400,000  
Meigs H. Whaples, Prest. Arthur P. Day, Secy.  
John P. Wheeler, Treas. Hosmer P. Redfield,  
Ass't Treas.

**R. F. JONES,**  
**.. General Building Contractor ..**  
Contracts Taken for all Manner  
of Buildings.  
36 Pearl Street - Hartford, Conn.

**Plimpton Mfg. Co.,**  
262-4-6 Pearl St.  
**Stationers and Engravers,**  
College Stationery a Specialty.

**BOSTON LOAN CO.**  
Loans Money on  
**Diamonds and Jewelry.**  
It is the largest and the best place in  
the city, and charges the lowest rates of  
interest.  
32 Asylum Street. Tel. 112-2

**BELKNAP & WARFIELD,**  
Booksellers and Stationers,  
77 and 79 Asylum Street,  
HARTFORD, CONN.

**Diamonds,**  
**Jewelry and Wedding Gifts.**  
**C. H. CASE & CO.,**  
851 Main St., Opp. State St.

**DO AS THE OTHERS DO**  
Buy your Drugs, Medicines, Candies,  
Smoking Articles, Etc., at  
Bienstock's Jefferson Pharmacy,  
990 Broad St. Post-Office Station 11.

**REGAL SHOES**  
**Chamberlin & Shaughnessy,**  
**OUTFITTERS,**  
65 to 73 Asylum Street.

For Nervous, Tired or Sick Headache, try  
Pike's Infallible Headache Powders  
Cure positively guaranteed.  
**PIKE'S DRUG STORES,**  
269 PARK STREET,  
343 PARK STREET and 173 ZION STREET

**ALFRED W. GREEN,**  
**PORTABLE DROP LAMPS.**  
**WELSBACK and ELECTRIC LIGHTS.**  
24 State Street, Open Evenings.

## ALUMNI DEPARTMENT.

'70—Arthur K. Brocklesby has re-  
covered from a recent attack of pneu-  
monia.

'97—Edgar C. Beecroft has been elect-  
ed supervisor of the town of Pelham,  
N. Y., on the democratic ticket.

'03—Rev. Robert Wight Trenbath, of  
Plainfield, N. J., has been called to  
Christ Church, Trenton, N. J., to suc-  
ceed Rev. E. J. Knight, recently elect-  
ed bishop of Western Colorado.

'96—W. S. Langford of the class of  
'96, refereed the Harvard-Dartmouth  
game last Saturday.

'97—A. M. Langford of the class of  
'97, was the referee at the Carlisle-  
Minnesota game on Saturday last.

## PLANS FOR THE 1909 IVY.

Although it has not as yet been  
definitely decided to give up the pub-  
lication of the 1908 Ivy which was  
planned to be on sale last June but is  
still incomplete on account of printers'  
troubles, it is generally thought that its  
publication will be omitted.

The members of the 1909 Ivy board  
recognizing the difficulty of publishing  
an Ivy on time have already started  
systematic work to this end. The Ivy  
will be printed by the Tuttle Printing  
Company, of Rutland, Vermont, who  
are under contract to complete the issue  
by April 1, 1908.

A special feature of the book will  
be new cuts of the college buildings and  
snapshots taken about college which  
represent more faithfully than the  
usual publication of school clubs' sta-  
tistics, etc., the true college life.

The members of the 1909 Ivy board  
urged the co-operation of undergrad-  
uates and alumni in the laudable work  
of compiling a book which will, from  
present indications, set a new standard  
for Trinity publications of this nature.  
The price of the book will be \$1.25.

## SOPHOMORE HOP.

At a meeting of the sophomore class  
held last Tuesday, a committee was ap-  
pointed to make arrangements for a  
Sophomore Hop. The hop will prob-  
ably be held some time next month. A  
small admission fee will be charged, in  
order to cover the expenses. The giv-  
ing of a dance by the sophomores is  
a new custom at Trinity.

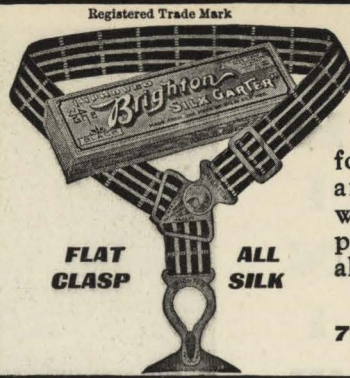
The committee is as follows: Eaton,  
chairman, Harmon, Neff, Brown,  
Carpenter.

## COLLEGE MEETING WEDNESDAY.

Tablet Board Reports.

At a college meeting held Wednesday  
noon, D. C. Pond '08, editor-in-chief  
of the Tablet, reported that of the 125  
pledged subscriptions, only 42 had been  
paid so far; furthermore, that until  
more money should be received, the  
Tablet would be obliged to postpone  
publication. An excellent first number  
has been prepared, and it remains only  
for those who have promised support  
to pay up and for others to subscribe.

Cardinal Gibbons has issued an appeal  
for a two million endowment for the  
Catholic University of America.



# BRIGHTON Flat Clasp Garters

for solid comfort. The newest shades  
and designs of one piece, **pure silk**  
web. All metal parts heavy nickel-  
plated brass, cannot rust. 25c. a pair,  
all dealers or by mail.

**PIONEER SUSPENDER CO.,**  
718 Market Street Philadelphia  
Makers of Pioneer Suspenders

## HALF HOSE

Direct to you from the  
German Makers, at only  
one profit. That saves  
money.

For  
Only **25c.** Pr.

An imported Gauze  
Lisle Sock, that at the  
Haberdasher's would cost  
you 37 1/2c. or 50c.

**Brown, Thomson  
and Company**

## FIDELITY TRUST CO.

46 Pearl St.,  
HARTFORD, CONN.

We do general Banking as well as all  
kinds of Trust business. We solicit ac-  
counts from College Organizations and  
Individuals.

LET US DO YOUR BANKING FOR YOU.

F. L. WILCOX, Pres't. LOOMIS A. NEWTON,  
Trinity '80. Sec'y.

## The Automatic Cashier Co.

Hartford, . . . Conn.

IRVING R. KENYON,  
Gen'l Manager.

## MORRIS & WALES

MW

"Something Different" in Magazine,  
Trade-paper and Circular Advertising  
PROVIDENT BUILDING PHILADELPHIA

Walter S. Schutz, Stanley W. Edwards,  
Trinity '94. Yale, '00.

**SCHUTZ & EDWARDS,**  
ATTORNEYS AND COUNSELLORS AT LAW,  
842-5 Connecticut Mutual Building,  
HARTFORD, CONN.  
Telephone No. 1838.

## BRUCE, FILLEY & CO.,

DEALERS IN  
Furniture, Carpets, Stoves.  
Sole Agents for the Celebrated  
MAGEE and HOUSEHOLD RANGES.  
103 Asylum St., Hartford, Conn.  
TELEPHONE 1217-3.

## LYMAN R. BRADLEY

CIGARS,  
PIPES,  
Smokers' Articles

436 Asylum Street.

## We're Always Studying

the subject of  
Clothes, Hats, and  
Outfittings for Men

Come and see the result

## HORSFALL & ROTHSCHILD

93-99 IT PAYS  
ASYLUM ST. TO BUY  
HARTFORD OUR KIND

## SIMONS & FOX,

240 Asylum Street,

Largest line of Favors in the City.

OUR OWN IMPORTATION.

## T. C. HARDIE, CAFE AND PACKAGE STORE,

283-287 Park St.  
Nearest Package Store to the College.

# GRAVES, DRUGS ! Cor. Main & Park Sts.

PLEASE PATRONIZE  
THOSE WHO  
ADVERTISE, AND WHEN  
DOING SO  
MENTION THE TRIPOD.



## The Connecticut Mutual Life Insurance Company,

HARTFORD, CONN.,

### Why should I insure my life?

Because it is a debt you owe to those who are dependent upon your earnings for their support.

You admit that it is your duty to supply their needs from day to day, but forget that it is equally your duty to provide an ever ready and sufficient equivalent for your earning power, which your family stands in constant jeopardy to lose by your premature death.

Guard your family against disaster and yourself against dependency in old age.

### When should I insure my life?

Now! The cost will never be less, and to-morrow you may not be able to obtain insurance at any price.

Even if others are not now dependent upon you, take time by the forelock and you will be the better able to meet future responsibilities, and at a smaller premium.

### Where shall I insure my life?

In a purely Mutual Company.

In a company that earns, declares, and pays annual dividends.

In a company that is doing a conservative business.

Such a Company is The Connecticut Mutual Life Insurance Company of Hartford, Conn. It furnishes perfect protection at lowest cost.

For further information, address the Company, or any of its agents.

JOHN M. TAYLOR, Pres't.  
HENRY S. ROBINSON, Vice-Pres't.  
WILLIAM H. DEMING, Secy.

## The General Theological Seminary, Chelsea Square, New York.

The next Academic Year will begin on September 16th, 1908.

Special Students admitted and Graduate course for Graduates of other Theological Seminaries.

The requirements for admission and other particulars can be had from  
THE VERY REV. WILFORD H. ROBBINS,  
D. D., LL. D., DEAN.

## HAVERFORD WORKS FOR TRINITY GAME.

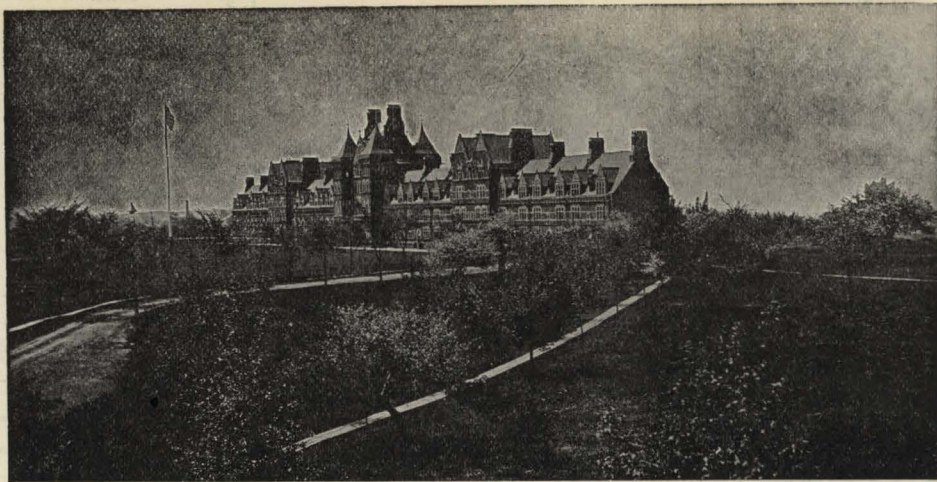
Haverford, Pa., Nov. 19—Great interest was shown on Walton Field this afternoon at the daily practice of the Haverford team. Although there was no cheering, quite a number of spectators were on the field, showing that much interest is being felt in the coming contest with Trinity to be played at Haverford this Saturday. Among the interested spectators was H. Scarlett, the Pennsylvania end.

The practice this afternoon was comparatively light. A good part of the afternoon was spent in signal work and in practicing new formations. The scrub and 'varsity then lined up for a short scrimmage. The first team found some of its old form and gained at will against the scrubs. Coach Haines hopes to work the team up to a climax for the Trinity game and have it in even better condition than it was for the Lehigh game.

Tomlinson, who has been laid up for several days, was able to get in active work this afternoon. Leonard is still sick and it is not yet known whether he will be in condition for Saturday. Deacon was at right guard on the 'varsity this afternoon.

Harvard has been celebrating this week the three hundredth anniversary of the birth of John Harvard.

# TRINITY



# COLLEGE

The largest of the Trinity College Buildings, shown in this cut, includes the principal Dormitories, the Chapel, the Library, and some of the Lecture Rooms. Other buildings are the Jarvis Laboratories, the Boardman Hall of Natural Science, the Observatory and the Gymnasium.

The Laboratories are fully equipped for work in Chemistry, Natural History, Physics, Experimental Psychology, and in preparation for Electrical Engineering. The Library is at all times open to students for study. A School of Civil Engineering offers complete preparation for professional work.

For Catalogues, etc., Address the Secretary of the Faculty, Trinity College, Hartford, Conn.

**THE COLLEGE MAN'S OPPORTUNITY.**  
We offer the **surest means** of finding your right place. Hundreds of good positions open in business, in teaching and in technical work. Offices in twelve cities. Write us to-day. **HAPGOODS**, The National Organization of Brain Brokers, Hartford Bldg., Chicago

### COLLEGE DIRECTORY.

ATHLETIC ASSOCIATION—Pres., H. C. Pond; Secy-Treas., H. I. Maxson.

FOOTBALL—J. O. Morris, Captain, E. J. Donnelly.

BASEBALL—Mgr., S. E. McGinley; Capt., I. L. Xanders.

TRACK—Mgr., E. K. Roberts, Jr.; Capt., H. B. Olmsted.

BASKETBALL—Mgr., H. F. McGuyer; Capt., E. J. Donnelly.

MUSICAL ORGANIZATIONS—Pres., W. R. Cross; Business Mgr., H. C. Goodrich.

TABLET BOARD—Editor-in-chief, D. C. Pond; Business Manager, T. N. Philips.

TRINITY IVY—Editor-in-Chief, G. E. Elwell; Business Manager, W. H. Plant.

TRINITY TRIPOD—Editor-in-chief, W. R. Cross; Treasurer, P. M. Butterworth. MISSIONARY SOCIETY—Secy., P. Roberts.

GERMAN CLUB—Pres., W. R. Cross; Secy-Treas., J. S. Carpenter, Jr.

CLASS PRESIDENTS—1908, H. C. Pond; 1909, P. Roberts; 1910, H. S. Marlor; 1911, B. F. Yates.

## The Ward Printing Co.

336 Asylum Street.

Hartford, Connecticut.

Printers of The Tripod.

## Resources over FIVE Million Dollars

WE INVITE  
YOUR ACCOUNT  
BUSINESS OR  
PERSONAL  
LARGE OR  
SMALL

**AETNA  
NATIONAL  
BANK**

NEXT DOOR  
TO  
HARTFORD  
PUBLIC  
LIBRARY

The Largest National Bank in Connecticut



**1 CENT** IS ALL IT WILL COST YOU to write for our big **FREE BICYCLE** catalogue showing the most complete line of high-grade BICYCLES, TIRES and SUNDRIES at **PRICES** BELOW any other manufacturer or dealer in the world.

**DO NOT BUY A BICYCLE** from anyone, at any price, or on any kind of terms, until you have received our complete **Free Catalogue** illustrating and describing every kind of high-grade and low-grade bicycles, old patterns and latest models, and learn of our remarkable **LOW PRICES** and wonderful new offers made possible by selling from factory direct to rider with no middlemen's profits.

**WE SHIP ON APPROVAL** without a cent deposit. Pay the Freight and allow 10 Days Free Trial and make other liberal terms which no other house in the world will do. You will learn everything and get much valuable information by simply writing us a postal.

We need a **Rider Agent** in every town and can offer an opportunity to make money to suitable young men who apply at once.

**\$8.50 PUNCTURE-PROOF TIRES** ONLY **\$4.80** PER PAIR

Regular Price \$8.50 per pair.  
**To Introduce We Will Sell You a Sample Pair for Only**

**4.80**  
NAILS, TACKS OR GLASS WON'T LET OUT THE AIR  
(CASH WITH ORDER \$4.55)

**NO MORE TROUBLE FROM PUNCTURES.**

Result of 15 years experience in tire making. No danger from **THORNS, CACTUS, PINS, NAILS, TACKS or GLASS.** Serious punctures, like intentional knife cuts, can be vulcanized like any other tire.

Two Hundred Thousand pairs now in actual use. Over Seventy-five Thousand pairs sold last year.

**DESCRIPTION:** Made in all sizes. It is lively and easy riding, very durable and lined inside with a special quality of rubber, which never becomes porous and which closes up small punctures without allowing the air to escape. We have hundreds of letters from satisfied customers stating that their tires have only been pumped up once or twice in a whole season. They weigh no more than an ordinary tire, the puncture resisting qualities being given by several layers of thin, specially prepared fabric on the tread. That "Holding Back" sensation commonly felt when riding on asphalt or soft roads is overcome by the patent "Basket Weave" tread which prevents all air from being squeezed out between the tire and the road thus overcoming all suction. The regular price of these tires is \$8.50 per pair, but for advertising purposes we are making a special factory price to the rider of only \$4.80 per pair. All orders shipped same day letter is received. We ship C.O.D. on approval. You do not pay a cent until you have examined and found them strictly as represented.

We will allow a cash discount of 5 per cent (thereby making the price \$4.55 per pair) if you send **FULL CASH WITH ORDER** and enclose this advertisement. We will also send one nickel plated brass hand pump and two Sampson metal puncture closers on full paid orders (these metal puncture closers to be used in case of intentional knife cuts or heavy gashes). Tires to be returned at OUR expense if for any reason they are not satisfactory on examination.

We are perfectly reliable and money sent to us is as safe as in a bank. Ask your Postmaster, Banker, Express or Freight Agent or the Editor of this paper about us. If you order a pair of these tires, you will find that they will ride easier, run faster, wear better, last longer and look finer than any tire you have ever used or seen at any price. We know that you will be so well pleased that when you want a bicycle you will give us your order. We want you to send us a small trial order at once, hence this remarkable tire offer.

**COASTER-BRAKES**, built-up wheels, saddles, pedals, parts and repairs, and prices charged by dealers and repair men. Write for our big **SUNDY** catalogue.

**DO NOT WAIT** but write us a postal today. **DO NOT THINK OF BUYING** a bicycle or a pair of tires from anyone until you know the new and wonderful offers we are making. It only costs a postal to learn everything. Write it **NOW**.

**MEAD CYCLE COMPANY, Dept. "JL" CHICAGO, ILL.**

