

# The Trinity Tripod

College Library.

VOL. IV. NO. 13.

HARTFORD, CONN., TUESDAY, NOVEMBER 12, 1907.

PRICE, FIVE CENTS.

## TRINITY DEFEATS STEVENS.

### Quadruple Pass Successful.

Score: Trinity 29, Stevens 6.

Trinity closed her "at home" schedule for this year by defeating the Stevens "Tech" team by the score of 29 to 6. Although this score looks a little one-sided, it is only fair to our opponents to say that the game was hard fought from start to finish, and if Stevens had been as proficient in the science of the new game as they were at sturdy "old football" the score would have been far closer. The score should have been 29 to 0 as their touchdown was made after the timekeeper had actually walked onto the field to call the close of the first half, but the ball was of the first half, but the ball was snapped for the play just in time and the play was legal. It was a bit of hard luck, as this is the only time an opposing team has scored against us on our own grounds this year, and aside from this our record would have been unblemished, but even as it is, it is indeed a very unusual feat, and one to be enthusiastic over.

A good crowd turned out to see the game, and as the day was warm and sunny they were kept comfortable, and in good humor, and were very appreciative of the scientific exposition of the possibilities of the forward pass, to the use of which Trinity owes directly four of her five touchdowns.

The game opened with Stevens kicking off to Batterson, Trinity defending the south goal. Donnelly and Xanders between them gained the distance, but Trinity was then forced to punt. Carrol and Donnelly nailing the runner in his tracks. Stevens couldn't gain at all, and punted, Batterson making a fine thirty-five-yard run-back. We gained ground in four plays, but a drop kick which was attempted, failed, Stevens recovering the ball on their eight-yard line. Trinity however presented a stone wall defence and took the ball, the honors going principally to Thaxter. Stevens in turn also showed fine defensive ability, and held twice, when an onside kick was tried. A Stevens man recovered the ball and had a clear field, but Henshaw caught him, and brought him down by a magnificent tackle from behind.

On the next few plays neither side could gain consistently, and an exchange of punts followed, until Xanders dropped a punt, giving Stevens the ball. They attempted an onside kick, which Gildersleeve blocked and recovered. Henshaw then got away for 30 yards around the end. On the next two plays Stevens held for no gain, but on the third Donnelly was shoved over for a touchdown, Batterson missing an easy goal.

After the next kick-off, a combination of fumbles, and poor forward passes caused the play to lag for a while, but Ramsdell broke the monotony

with a "bump," when on a beautifully worked quadruple forward pass, he scored a touchdown after a long run. Gildersleeve kicked the goal.

The ball again proved elusive on the resumption of play, until Stevens got off a short, high punt, which Maxson recovered by a clever catch on Stevens' thirty-yard line. The onside kick was tried again, but as usual Stevens obtained the ball, and on good defensive work by Gildersleeve and Carrol they were forced to punt. On a combination of a quarterback run and forward pass Ramsdell scored another touchdown, Gildersleeve kicking the goal.

Now for the first time Stevens came within striking distance, for after the kick-off we attempted a forward pass, which failed and gave them the ball well in our territory. But the defense was strong, even in the face of a discouraging penalty for offside play, and Trinity took the ball. On a forward pass Trinity fumbled, giving Stevens the ball on the twelve-yard line. Twice again they were held for no gain, Gildersleeve especially doing wonderful defensive work, but just as time was up, a forward pass was worked successfully, O'Conner going over for a touchdown, and Roberts kicking the goal.

Donnelly\*opened the second half by kicking off to Utz, but Stevens was immediately forced to punt. Maxson and Donnelly made two good gains for thirteen yards, and then Ramsdell worked another forward pass successfully, and scored a touchdown after a 25-yard run. Gildersleeve kicked the goal.

Stevens then kicked off to Batterson, who made a good run back, and Maxson followed with a good ten-yard gain, but Stevens recovered the ball on a fumbled forward pass. They tried a forward pass, which Maxson obtained and on the next play Henshaw and Donnelly worked the pass to perfection for 30 yards. The triple pass was then used, Batterson receiving the ball, for another long gain. Stevens, however, held well, and Batterson tried a goal from the field which went wide, Stevens taking the ball. They couldn't gain successfully, and punted to Maxson. Then for the fourth time, Ramsdell took a long forward pass in beautiful style, and ran 75 yards for a touchdown, Gildersleeve kicking the goal. In the remaining minutes the only features were the good offensive work of Donnelly and Maxson, and a fifteen-yard run by Batterson.

The Stevens team must be given great praise for their pluck and grit, for no matter what the score against them was, they fought pluckily on, and the game was full of interest to the very end. The feature of the game was the unerring precision with which Trinity

## TRINITY PROFESSORS AT TEACHERS MEETING.

The annual meeting of the Connecticut section of the Association of Mathematic Teachers of New England was held in Hartford Saturday. Professor Esty of Amherst College read an interesting paper on "Suggestions from the College Entrance Examination Board on Mathematics."

Professor Joseph D. Flynn of Trinity opened the discussion which followed Professor Esty's paper and went into the difficulty of teaching plane geometry as compared with elementary algebra. He went also into several technical points connected with the simplification of complex terms and fractions in algebra.

The afternoon session began with a talk by Professor Roscoe J. Ham of Trinity, formerly a member of the Maine Modern Language association. Professor Ham's subject was "Hints From the Experience of an Admission Examiner." A discussion of college entrance board papers, of this year, followed.

## TRINITY JUMPS UP ONE PLACE.

### The Old Gold and Blue Now Sixth in Line.

The following is a table of the football scores including the games of Saturday. It will be noted that Wesleyan is no longer last in the list but has given way to Holy Cross. The scores:—

	Opponents	Games
Princeton,	272 11	8
Pennsylvania,	238 36	10
Carlisle,	237 48	9
Penn. State,	216 52	7
Yale,	184 0	8
Trinity,	154 29	6
Cornell,	154 33	8
Lehigh,	145 24	7
Lafayette,	141 41	7
Dartmouth,	128 10	8
Harvard,	122 37	8
Swarthmore,	115 31	6
Brown,	114 50	8
Michigan,	107 0	5
Williams,	101 60	8
Annapolis,	94 30	9
West Point,	81 14	6
Training School,	81 32	7
Aggies,	73 31	7
Amherst,	43 29	6
Wesleyan,	22 109	7
Holy Cross,	5 167	7

## PRES. LUTHER AT PHILLIPS-EXETER.

Last Sunday President Luther preached at Phillips-Exeter Academy. The many trips of this character which Dr. Luther makes, are of great benefit to the college, as his personality and his lectures are so magnetic that all men who hear him become more interested in Trinity College.

The Glee Club will hold a rehearsal to-night at 7 o'clock.

## TRINITY LEADS ALL OTHER COLLEGES.

Makes the Largest Gain in Number of Students With an Increase of 16 Per Cent.

Trinity men have every reason to be proud of the marked increase in registration at college this year. There are thirty more men in Trinity this year than there were last and this gives an increase of 16 per cent which is the largest gain made at any of the representative colleges in both the east and west.

The following table showing the comparative registration has been compiled by Frank B. Tracy for the Boston Transcript:—

	1906	1907	Per cent Increase
Trinity college,	183	213	.16
Georgia,	410	473	.15
Kansas,	1689	1932	.14
Columbia, (b)	4650	5195	.12
Iowa,	1968	2188	.11
Pennsylvania,	3810	4226	.11
Maine,	687	775	.11
Lake Forest,	368	406	.10
Mass. Agricultural,	220	244	.10
Illinois,	3810	4172	.09
Northwestern,	3390	3587	.09
Boston college,	483	527	.09
California,	2743	2978	.09
Wisconsin,	2720	2977	.09
Missouri,	2071	2274	.09
Tufts college,	1091	1185	.09
Nebraska,	2607	2812	.08
Indiana,	1515	1628	.08
Amherst,	475	510	.07
Bates,	415	445	.07
Michigan,	4218	4499	.06
Syracuse,	3005	3200	.06
Cornell,	3436	3639	.06
Dartmouth,	1058	1129	.06
Chicago,	2173	2296	.06
Stanford,	1518	1583	.04
Oberlin,	1652	1700	.03
Yale,	3247	3299	.02
Brown,	915	933	.02
Technology,	1373	1390	.01
Virginia,	774	779	.01
Minnesota,	4145	4207	.01
Bowdoin,	305	305	..
Boston university,	1143	1142	..
Harvard (a),	5362	5346	*.01
Williams,	476	470	*.01
Colby,	238	235	*.01
Wesleyan,	318	310	*.03
Princeton,	1347	1311	*.03
Vermont,	371	347	*.06
Holy Cross,	315	290	*.08

\*Decrease.

(a) This includes summer school and Radcliffe.

(b) This includes summer school and Barnard.

There will be a rehearsal of the Mandolin Club at 7 o'clock this evening in Alumni Hall.

The Tablet board will meet Thursday evening for final consideration of material for the first issue of the publication.

The second team will play the Wesleyan Freshmen at Middletown this Saturday.

(Continued on page 3).



# The Trinity Tripod

Published Tuesdays and Fridays  
in each week of the college year by  
students of Trinity College.

The columns of THE TRIPOD are at all times open to Alumni, Undergraduates and others for the free discussion of matters of interest to Trinity men.

All communications, or material of any sort for Tuesday's issue must be in the Tripod box before 10 p.m. on Monday; for Friday's issue before 10 a.m. on Thursday.

Subscribers are urged to report promptly any serious irregularity in the receipt of the Tripod. All complaints and business communications should be addressed to the Circulation Manager.

Entered as second class matter Nov. 29, 1904,  
at the Post Office, at Hartford, Conn.

Editor-in-Chief,  
W. R. Cross '08.

Associate Editors,  
W. J. Hamersley '09  
H. N. Chandler '09

L. G. Harriman '09 (Athletics)  
P. M. Butterworth '08 (Advertising)

Gilbert Brown '10  
C. M. Butterworth '09 (Alumni)

Wells Eastman, '09.  
H. O. Peck '09 (Circulation)

P. H. Barbour '09  
W. H. Plant '09.

Subscription Price, \$2.00 Per Year.

Advertising Rates furnished on application.

Office, 10 Northam Towers.

"NOW THEN—TRINITY!"

## EDITORIAL.

As yet we have heard nothing from 1910 about a college smoker. The Tripod hopes that the sophomore class will not forget about this custom which was instituted by the present senior class and so successfully adopted by 1909 a year later. The Brown and White of Lehigh University of a recent date gives an account of the college smoker held there on the evening before the Haverford football game. It may be interesting to give a brief summary of the Lehigh smoker for the benefit of the sophomore committee.

The smoker opened with a basketball game between the two underclasses and during the half a quintet rendered some selections. After the game there were speeches, a boxing match, a wrestling bout, selections by the glee club, and lots of smoke.

Trinity's football team won its fourth game Saturday. As usual the team put up a fast proposition of the sport. The play was somewhat weakened by the absence of Pond at quarter but still we scored five touchdowns. An unfortunate part of the game was that our goal line was crossed for the first time on Trinity field during the entire season. This was done after the time-keeper had gone out on the field to announce that time was up. The play had just started so it had to continue according to the rules. Hard practice will be given the team all this week and on Friday they will leave for Schenectady to play Union.

Morrill hall, the latest new building at the University of Vermont, will be dedicated soon. The governor and both senators are expected to be present.

## BASEBALL SCHEDULE NEARLY COMPLETED.

Manager McGinley is hard at work preparing the baseball schedule. He has been laboring under difficulties owing to the restrictions of the faculty, which limit him to twelve games during the term of which only four can be on Wednesdays, and of these four only one out of town, and the games with Wesleyan must be on Saturdays. Notwithstanding this, the schedule is nearly completed. Mr. McGinley is also trying to obtain games for a trip during the Easter vacation.

## GERMAN CLUB ELECTIONS.

At a meeting of the German Club held at the Alpha Delta Phi house Friday the following men were elected to membership: Henry Carleton Goodrich '09, of South Glastonbury, Conn.; Ralph Howard Merrill '10, of Pittsfield, Mass.; Arthur Worthington Bunnell '11, of Norwich, Conn.; Harold Edwin Jones '11, of Winsted, Conn.; Gordon William Stuart '11, of Portland, Conn.

This addition gives the club a membership of twenty-five. The other members are: Bern Budd '08, Paul McM. Butterworth '08, William R. Cross '08, James O. Morris '08, Martin Taylor '08, James S. Carpenter, Jr. '09, William J. Hamersley '09, William G. Livingston '09, Edward K. Roberts, Jr. '09, Frederick S. Bishop '10, Nelson H. Gildersleeve '10, A. Spencer Murray 3rd '10, Arthur L. Potter '10, Carroll M. Robertson '10, Wilbert A. Smith '10, Leon A. Stansfield '10, Hazell H. Burgwin '11, William C. Skinner '11, Berman T. Woodle '11, and Blynn F. Yates '11.

## ALL-NEW ENGLAND BASKETBALL TEAM.

Captain Donnelly Center on Second Five.

The Spaulding Collegiate Basketball Guide for 1907-08 is out. It contains a review of the New England basketball season by C. A. Wilson. In his resume he picked the All-New England team as follows:—

### First Team.

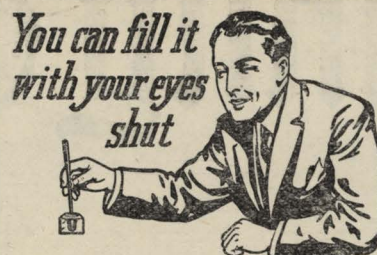
Forward—Greibenstein, Dartmouth.  
Forward—Warren, Williams.  
Center—Pryor, Brown.  
Guard—Tower, Williams.  
Guard—Chamberlin, Wesleyan.

### Second Team.

Forward—Brady, Dartmouth.  
Forward—Soule, Wesleyan.  
Center—Donnelly, Trinity.  
Guard—Lane, Dartmouth.  
Guard—Coster, Colgate.

## PHI GAMMA DELTA INITIATIONS.

The Tan Alpha chapter of the Phi Gamma Delta fraternity held its annual fall initiation last Saturday evening. The following men were taken into the fraternity: Class of 1909, Clinton J. Backus, St. Paul, Minn.; Charles E. Morrow, Hartford; Class of 1910, William G. Oliver, Emmonsville, Md.; August H. Leschke, Hartford; 1911, Joseph O. Carrol, Pittsfield, Mass.; Herman Cawley, Hartford; Ashley L. Cook, Hadley, Mass.; Wade H. Knowlton, New Boston, Mass.; Earl B. Ramsdell, Lee, Mass.



You can fill it  
with your eyes  
shut

## Conklin's Self-Filling Fountain Pen

Conklin's Self-Filling Pen is the best fountain pen for both student and professor on account of the Crescent-Filler. To fill simply dip it in any ink and press the Crescent-Filler—that's all. No dropper—no inky fingers—no ruffled temper. Guaranteed to be a perfect writer.

Leading dealers handle the Conklin. If yours does not, order direct. Refuse substitutes. Send for handsome new catalog.

THE CONKLIN PEN CO.  
310 Manhattan Building, TOLEDO, OHIO

## F. L. PRICKETT,

71 Asylum Street, Room 1.  
PICTURE FRAMER AND DEALER.  
25 years experience in framing, restoring and gilding.  
Special attention given to shipping.  
Send postal or telephone-167-3.

At College every Monday evening.

JUST UNDER THE ROXBURY.

## M. JACOBS,

1078 CHAPEL ST. NEW HAVEN, CONN.  
TELEPHONE CONNECTION.

## H. M. Johnson

Personal attention in photographic work in all its branches

### STUDIO

1039 MAIN STREET

TELEPHONE 228-6

## When You Are Down Town

looking for the fellows, you are sure to find some of them in

**March's BARBER SHOP**  
Connecticut Mutual Bldg  
VIBRATION SHAMPOO  
MANICURE BY LADY ATTENDANT

## THE SISSON DRUG CO.

CHEMICALS, DRUGS  
AND MEDICINES.

729 MAIN STREET

Christmas will be here  
before you  
Know it  
and a  
Waterman's  
Ideal  
Fountain Pen

will happily solve  
many of your  
gift prob-  
lems

The  
desires of  
everybody  
can be satis-  
fied. Perfect  
make and quality.  
In many designs  
with a wide range  
of Gold Pen Points.  
Prices to please all.  
Sold by best dealers.

LEWATERMAN CO. 173 Broadway N.Y.  
9 SCHOOL ST. BOSTON 200 STATE ST. CHICAGO  
130 ST. JAMES ST. MONTREAL  
742 MARKET ST. SAN FRANCISCO  
18 GOLDEN LANE LONDON E.C.

## THE BOARDMAN'S LIVERY STABLE

INCORPORATED

First Class Coach Service

For Dances, Receptions, Etc.

356-358 MAIN ST.

Telephone 930

All night coach service



ARCADE  
AN  
**ARROW**  
CLUPEO SHRUNK QUARTER SIZE  
COLLAR  
15 CENTS EACH; 2 FOR 25 CENTS  
CLUETT, PEABODY & CO., MAKERS OF CLUETT SHIRTS



**Eaton - Hurlbut  
Paper Company**

..Makers of High Grade..

Papers

and

Society Stationery,

PITTSFIELD, MASS.

## The Marwick Drug Co.

Cor. Main and Asylum Sts.

Our Candy Corner offers special attractions

CIGARS AND CIGARETTES  
Popular brands fresh from the makers.

SODA DEPARTMENT  
Cold Soda, College Ices and Ice Cream Soda

Hot drinks now ready  
All drinks made right—Served right

Elmer B. Akley, D. D. S.

Room 77, Sage-Allen Bldg.

Office Hours

9 A. M. to 4 P. M.

## THE LINUS T. FENN CO.

FURNITURE

Rugs Carpets, Draperies,  
Novelties for Students Rooms

653 Main Street, cor. Gold.

## THE GARDE,

Asylum and High Streets.

ENTIRELY NEW AND MODERN.

Conducted on the European and  
American Plans.

## ILLUSTRATING.

THE A. PINDAR CORP.  
730 MAIN ST. HARTFORD, CT.  
HALF-TONE  
WOOD ENG. ZINC ETCHING.  
ELECTROTYPING.



**Coe Bill**  
**\$2.50**  
**.. HAT ..**  
 (None better for \$3.00)

If you are in need of Fall or Winter suits call on our representative at 34 Jarvis Hall who has a fine line of samples to select from.

**M. PRESS & CO.,**  
**College Tailors**

**PLUMBING**  
 Coal and Gas Ranges, Roofing,  
**GAS MANTLES**

**N. B. BULL & SON,**  
 Telephone 2048. 257 Asylum Street.

**CONNECTICUT TRUST and**  
**SAFE DEPOSIT COMPANY**

Cor. Main and Pearl Sts., Hartford, Conn.  
 Capital \$300,000 Surplus \$400,000  
 Meigs H. Whaples, Pres. Arthur P. Day, Secy.  
 John P. Wheeler, Treas. Hosmer P. Redfield,  
 Ass't Treas.

**R. F. JONES,**  
**.. General Building Contractor ..**  
 Contracts Taken for all Manner  
 of Buildings.

36 Pearl Street - Hartford, Conn.

**Plimpton Mfg. Co.,**  
 262-4-6 Pearl St.  
**Stationers and Engravers,**  
 College Stationery a Specialty.

**BOSTON LOAN CO.**  
 Loans Money on  
**Diamonds and Jewelry.**

It is the largest and the best place in the city, and charges the lowest rates of interest.  
 32 Asylum Street. Tel. 112-2

**BELKNAP & WARFIELD,**  
 Booksellers and Stationers,  
 77 and 79 Asylum Street,  
 HARTFORD, CONN.

**Diamonds,**  
**Jewelry and Wedding Gifts.**  
**C. H. CASE & CO.,**  
 851 Main St., Opp. State St.

**DO AS THE OTHERS DO**  
 Buy your Drugs, Medicines, Candies,  
 Smoking Articles, Etc., at  
 Bienstock's Jefferson Pharmacy,  
 990 Broad St. Post-Office Station 11.

**REGAL SHOES**  
**Chamberlin & Shaughnessy,**  
**OUTFITTERS,**  
 65 to 73 Asylum Street.

For Nervous, Tired or Sick Headache, try  
 Pike's Infallible Headache Powders  
 Cure positively guaranteed.  
**PIKE'S DRUG STORES,**  
 269 PARK STREET.  
 343 PARK STREET and 173 ZION STREET

**ALFRED W. GREEN,**  
**PORTABLE DROP LAMPS.**  
**WELSBACH and ELECTRIC LIGHTS.**  
 24 State Street, Open Evenings.

**ALUMNI DEPARTMENT.**

'27—A package of manuscript sermons by the Rev. John Morgan has been presented to the archives of the Diocese of Connecticut by the Rev. Louis French '53.

'63—The wife of the Rt. Rev. William Crosswell Doane, hon. '63, Bishop of Albany, died Saturday after an illness of a few days.

'93—The Rev. Frederick B. Cole has taken charge of St. Paul's Church, Windsor Locks, Conn., together with Calvary Church, Suffield, and Grace Church, Broad Brook.

'94—The address of F. P. Johnson is Yale & Towne Co., Wallingford, Ct.

'94—Shirley Carter is connected with the Pennsylvania Railroad at Baltimore, Maryland.

'96—O. Taylor Paine visited college Saturday.

'97—The Rev. W. S. Danker has become rector of St. John's Church, Worcester, Mass.

'99—The Rev. Ernest A. Rich is in charge of the church of the Transfiguration, Blue Ridge Summit, and of Calvary Church, Beartown, Pa.

'99—A paper by Harold L. Cleasby on "The Medea of Seneca," has been published in the Harvard Studies in Classical Philology.

Ex-'09—W. A. Henshaw visited college Saturday.

'05—R. M. Ewing has changed his address to Pass Christian, Miss.

'06—D. E. Lauderburn is in the lumber business at Balsam, N. C.

Ex-'09—T. R. Clendimen was at college over Sunday. He is at present in the New York Law School.

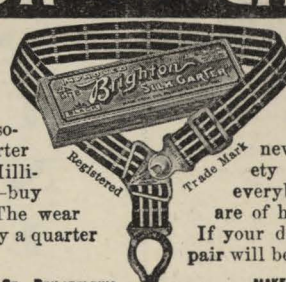
(Continued from page 1).

worked the forward pass, time and again. Ramsdell's work on this type of play was wonderful, while on the defence Carrol and Gildersleeve left nothing to be desired. The latter proves to be a great find, especially from his ability as a goal-kicker, aside from his excellent all-around play. In addition to these three the usual good play of Donnelly, Maxson, and Henshaw deserves mention.

The summary is as follows:—

Stevens	Trinity
O'Conner, Schulz, 1e	Gildersleeve,
	Budd
Hearsey,	1t Carrol
Tyson,	1g George Buck
Voigtlander,	c Thaxter
Halm,	rg Snow, Gott
Hendricks,	rt Donnelly (c)
Meyers,	re Collins, Ramsdell
Roberts (c),	qb Batterson
Ridgway,	1hb Maxson, Mason
Utz,	rhb Henshaw
Fonda,	fb Xanders, Maxson
Referee, Fuever, of Oberlin; umpire,	
Washburn, of Amherst; linesman, Allen,	
of Yale. Halves, thirty minutes each	
Touchdowns, Ramsdell 4, Donnelly 1,	
O'Conner 1; goals, Gildersleeve 4,	
Roberts 1.	

**BRIGHTON FLAT CLASP GARTERS**



The grasp of the clasp is easy. It's flat—the only absolutely flat clasp garter is the Brighton. Millions of men know this—buy them and wear them. The wear is there, and they cost only a quarter a pair. Remember it.

Brightons are made of pure silk web. The patterns are new, exclusive—variety enough to satisfy everybody. All metal parts are of heavy nickel-plated brass. If your dealer can't supply you, a pair will be sent upon receipt of price.

MAKERS OF PIONEER SUSPENDERS

PIONEER SUSPENDER CO., 718 MARKET ST., PHILADELPHIA

*If You Don't Buy*

**"BARKER" COLLARS**

*You Ought Too.*

**THEY ARE LINEN.**

**Two for a Quarter.**

**Brown, Thomson and Company**

**FIDELITY TRUST CO.**

46 Pearl St.,  
 HARTFORD, CONN.

We do general Banking as well as all kinds of Trust business. We solicit accounts from College Organizations and Individuals.

LET US DO YOUR BANKING FOR YOU.

F. L. WILCOX, Pres't. LLOOMIS A. NEWTON, Sec'y.  
 Trinity '80.

**The Automatic Cashier Co.**  
 Hartford, . . . Conn.  
 IRVING R. KENYON,  
 Gen'l Manager.

J. A. WALES, '01.  
**MORRIS & WALES**

**MW**  
 "Something Different" in Magazine, Trade-paper and Circular Advertising  
 PROVIDENT BUILDING PHILADELPHIA

Walter S. Schutz, Trinity '94. Stanley W. Edwards, Yale, '00.  
**SCHUTZ & EDWARDS,**  
 ATTORNEYS AND COUNSELLORS AT LAW,  
 642-5 Connecticut Mutual Building,  
 HARTFORD, CONN.  
 Telephone No. 1838.

**BRUCE, FILLEY & CO.,**

DEALERS IN  
 Furniture, Carpets, Stoves.  
 Sole Agents for the Celebrated  
 MAGEE and HOUSEHOLD RANGES.  
 103 Asylum St., Hartford, Conn.  
 TELEPHONE 1217-3.

**LYMAN R. BRADLEY**

**CIGARS,**  
**PIPES,**  
**Smokers' Articles**

436 Asylum Street.

**We're Always Studying**

the subject of  
 Clothes, Hats, and  
 Outfittings for Men

Come and see the result

**HORSFALL & ROTHSCHILD**

93-99 ASYLUM ST. HARTFORD  
 IT PAYS TO BUY OUR KIND

**SIMONS & FOX,**

240 Asylum Street,

**Largest line of Favors in the City.**

OUR OWN IMPORTATION.

**T. C. HARDIE,**  
**CAFE AND PACKAGE STORE,**  
 283-287 Park St.  
 Nearest Package Store to the College.

**GRAVES, DRUGS !**  
 Cor. Main & Park Sts.

PLEASE PATRONIZE  
 THOSE WHO  
 ADVERTISE, AND WHEN  
 DOING SO  
 MENTION THE TRIPOD.



## The Connecticut Mutual Life Insurance Company,

HARTFORD, CONN.,

### Why should I insure my life?

Because it is a debt you owe to those who are dependent upon your earnings for their support.

You admit that it is your duty to supply their needs from day to day, but forget that it is equally your duty to provide an ever ready and sufficient equivalent for your earning power, which your family stands in constant jeopardy to lose by your premature death.

Guard your family against disaster and yourself against dependency in old age.

### When should I insure my life?

Now! The cost will never be less, and to-morrow you may not be able to obtain insurance at any price.

Even if others are not now dependent upon you, take time by the forelock and you will be the better able to meet future responsibilities, and at a smaller premium.

### Where shall I insure my life?

In a purely Mutual Company. In a company that earns, declares, and pays annual dividends.

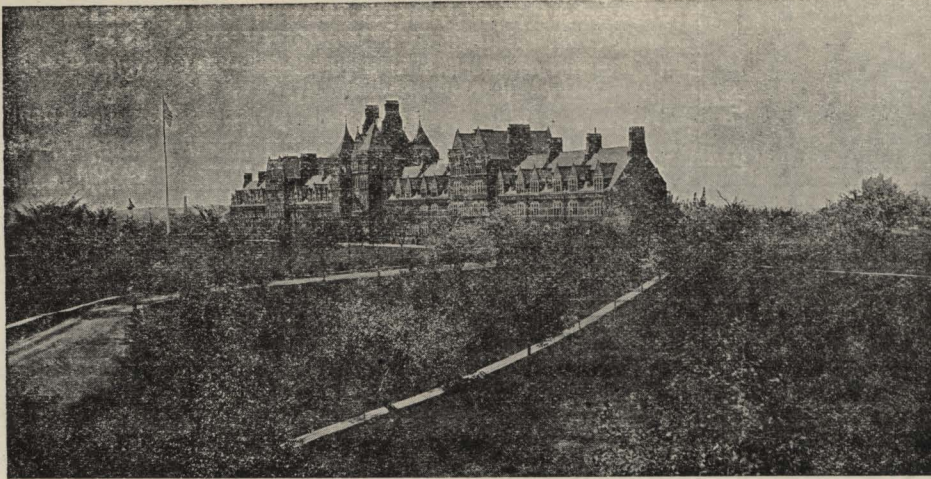
In a company that is doing a conservative business.

Such a Company is The Connecticut Mutual Life Insurance Company of Hartford, Conn. It furnishes perfect protection at lowest cost.

For further information, address the Company, or any of its agents.

JOHN M. TAYLOR, Pres't.  
HENRY S. ROBINSON, Vice-Pres't.  
WILLIAM H. DEMING, Secy.

# TRINITY



# COLLEGE

The largest of the Trinity College Buildings, shown in this cut, includes the principal Dormitories, the Chapel, the Library, and some of the Lecture Rooms. Other buildings are the Jarvis Laboratories, the Boardman Hall of Natural Science, the Observatory and the Gymnasium.

The Laboratories are fully equipped for work in Chemistry, Natural History, Physics, Experimental Psychology, and in preparation for Electrical Engineering. The Library is at all times open to students for study. A School of Civil Engineering offers complete preparation for professional work.

For Catalogues, etc., Address the Secretary of the Faculty, Trinity College, Hartford, Conn.

**THE COLLEGE MAN'S OPPORTUNITY.**  
We offer the **surest means** of finding your right place. Hundreds of good positions open in business, in teaching and in technical work. Offices in twelve cities. Write us to-day. **HAPGOODS**, The National Organization of Brain Brokers, Hartford Bldg., Chicago

### The General Theological Seminary, Chelsea Square, New York.

The next Academic Year will begin on September 16th, 1908. Special Students admitted and Graduate course for Graduates of other Theological seminaries. The requirements for admission and other particulars can be had from **THE VERY REV. WILFORD H. ROBBINS, D. D., LL. D., DEAN.**

### FRESHMAN-JUNIOR BANQUET COMMITTEE.

At a meeting of the freshman class held yesterday, it was decided to have the committee for the Freshman-Junior banquet elected by the class, instead of being appointed by the president of the class. The following committee was elected: H. H. Burgwin, chairman, S. P. Haight, B. T. Woodle, W. C. Skinner, Jr., C. E. Sherman and the president of the class ex-officio.

### SATURDAY'S FOOTBALL SCORES.

Carlisle 23, Harvard 15.  
Yale 22, Brown 0.  
Princeton 14, Amherst 0.  
Cornell 14, West Point 10.  
Dartmouth 52, Holy Cross 0.  
Williams 18, Wesleyan 0.  
Pennsylvania 28, Pennsylvania State 0.  
Swarthmore 18, Annapolis 0.  
"Aggies" 19, Tufts 10.  
Training school 35, Worcester "Tech" 0.  
Vermont 35, New Hampshire 0.  
West Pennsylvania 10, West Virginia 0.  
Lehigh 34, University of New York 0.  
Gettysburg 12, Ursinus 0.  
Colgate 20, Hamilton 10.  
Lafayette 34, Bucknell 0.  
North Carolina 12, Georgetown 5.  
Haverford 6, Rutgers 5.  
Rochester 4, Union 0.

### COLLEGE NEWS.

W. S. Langford umpired the Williams-Wesleyan game at Middletown Saturday.

C. M. Robertson and F. S. Bishop who entered college this fall from Williams attended the Williams-Wesleyan game Saturday.

## The Ward Printing Co.

336 Asylum Street.

Hartford, Connecticut.

Printers of The Tripod.

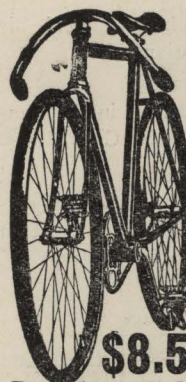
## Resources over FIVE Million Dollars

WE INVITE  
YOUR ACCOUNT  
BUSINESS OR  
PERSONAL  
LARGE OR  
SMALL

**AETNA  
NATIONAL  
BANK**

NEXT DOOR  
TO  
HARTFORD  
PUBLIC  
LIBRARY

The Largest National Bank in Connecticut



**1 CENT IS ALL IT WILL COST YOU** to write for our big **FREE BICYCLE** catalogue showing the most complete line of high-grade BICYCLES, TIRES and SUNDRIES at **PRICES** BELOW any other manufacturer or dealer in the world.

**DO NOT BUY A BICYCLE** from anyone, or on any kind of terms, until you have received our complete **Free Catalogue** illustrating and describing every kind of high-grade and low-grade bicycles, old patterns and latest models, and learn of our remarkable **LOW PRICES** and wonderful new offers made possible by selling from factory direct to rider with no middlemen's profits.

**WE SHIP ON APPROVAL** without a cent deposit. Pay the Freight and allow 10 Days Free Trial and make other liberal terms which no other house in the world will do. You will learn everything and get much valuable information by simply writing us a postal.

We need a **Rider Agent** in every town and can offer an opportunity to make money to suitable young men who apply at once.

**\$8.50 PUNCTURE-PROOF TIRES ONLY \$4.80**  
Regular Price \$8.50 per pair. To Introduce We Will Sell You a Sample Pair for Only \$4.80 (CASH WITH ORDER \$4.55)

**NO MORE TROUBLE FROM PUNCTURES.** Result of 15 years experience in tire making. No danger from THORNS, CACTUS, PINS, NAILS, TACKS or GLASS. Serious punctures, like intentional knife cuts, can be vulcanized like any other tire.

Two Hundred Thousand pairs now in actual use. Over Seventy-five Thousand pairs sold last year.

**DESCRIPTION:** Made in all sizes. It is lively and easy riding, very durable and lined inside with a special quality of rubber, which never becomes porous and which closes up small punctures without allowing the air to escape. We have hundreds of letters from satisfied customers stating that their tires have only been pumped up once or twice in a whole season. They weigh no more than an ordinary tire, the puncture resisting qualities being given by several layers of thin, specially prepared fabric on the tread. That "Holding Back" sensation commonly felt when riding on asphalt or soft roads is overcome by the patent "Basket Weave" tread which prevents all air from being squeezed out between the tire and the road thus overcoming all suction. The regular price of these tires is \$8.50 per pair, but for advertising purposes we are making a special factory price to the rider of only \$4.80 per pair. All orders shipped same day letter is received. We ship C.O.D. on approval. You do not pay a cent until you have examined and found them strictly as represented.

We will allow a cash discount of 5 per cent (thereby making the price \$4.55 per pair) if you send **FULL CASH WITH ORDER** and enclose this advertisement. We will also send one nickel plated brass hand pump and two Sampson metal puncture closers on full paid orders (these metal puncture closers to be used in case of intentional knife cuts or heavy gashes). Tires to be returned at **OUR** expense if for any reason they are not satisfactory on examination.

We are perfectly reliable and money sent to us is as safe as in a bank. Ask your Postmaster, Banker, Express or Freight Agent or the Editor of this paper about us. If you order a pair of these tires, you will find that they will ride easier, run faster, wear better, last longer and look finer than any tire you have ever used or seen at any price. We know that you will be so well pleased that when you want a bicycle you will give us your order. We want you to send us a small trial order at once, hence this remarkable tire offer.

**COASTER-BRAKES**, built-up-wheels, saddles, pedals, parts and repairs, and everything in the bicycle line are sold by us at half the usual prices charged by dealers and repair men. Write for our big **SUNDRY** catalogue.

**DO NOT WAIT** but write us a postal today. **DO NOT THINK OF BUYING** a bicycle or a pair of tires from anyone until you know the new and wonderful offers we are making. It only costs a postal to learn everything. Write it **NOW**.

**MEAD CYCLE COMPANY, Dept. "JL" CHICAGO, ILL.**

