

Trinity College

## Trinity College Digital Repository

---

Trinity Tablet (1868-1908)

Trinity Publications (Newspapers, Yearbooks,  
Catalogs, etc.)

---

5-21-1897

### Trinity Tablet, May 21, 1897 Advertisements

Trinity College

Follow this and additional works at: <https://digitalrepository.trincoll.edu/tablets>

---

#### Recommended Citation

Trinity College, "Trinity Tablet, May 21, 1897 Advertisements" (1897). *Trinity Tablet (1868-1908)*. 411.  
<https://digitalrepository.trincoll.edu/tablets/411>

This Book is brought to you for free and open access by the Trinity Publications (Newspapers, Yearbooks, Catalogs, etc.) at Trinity College Digital Repository. It has been accepted for inclusion in Trinity Tablet (1868-1908) by an authorized administrator of Trinity College Digital Repository.

**Trinity College**  
HARTFORD CONNECTICUT

# THE TRINITY TABLET

ESTABLISHED APRIL 11 1868

TRINITY COLLEGE

VOL. XXX

MAY 21 1897

No. 10

## CONTENTS

	PAGE		PAGE
EDITORIALS . . . . .	217	VERSE . . . . .	230
A SONNET . . . . .	220	COLLEGE AND CAMPUS . . . . .	231
"HATRED" . . . . .	220	ATHLETICS . . . . .	234
UNDER THE APPLE-TREE LYING . . . . .	225	PERSONALS . . . . .	235
LA PLACE DE LA CONCORDE . . . . .	225	NECROLOGY . . . . .	236
RONDEL . . . . .	228	THE STROLLER . . . . .	236
"TRUSTS" . . . . .	228	BOOK REVIEWS . . . . .	238

HARTFORD  
CONN

---



---

# TRINITY COLLEGE,

## HARTFORD, CONN.

---

**T**HIS College was chartered by the state of Connecticut in 1823, and as this result was chiefly due to the activity and sagacity of the Rt. Rev. Bishop Brownell, he may justly be regarded as its founder. This college does only college work. There is no divinity, law, medical or other professional school connected with it, as it is intended to give a liberal Education, adapted to fit young men to enter most advantageously upon the study of the Learned Professions or a business career after graduation. Its course of study is therefore conservative, adhering to that system which long experience has shown to be most effective. In all essential respects its course of study is similar to that of the leading American Colleges, its requirements for admission with those at Harvard and the twelve associated colleges, of which this college is one, according to the schedule adopted by them some years ago. Its situation is elevated, commanding a beautiful view, and very salubrious. Its buildings are new and unsurpassed for convenience and comfort.

### *COURSES OF INSTRUCTION.*

The college offers four courses of instruction, viz. : I. A COURSE IN ARTS; II. A COURSE IN LETTERS AND SCIENCE; III. A COURSE IN SCIENCE; IV. A COURSE IN LETTERS.

The courses extend over four years, with the exception of the Course in Science, which is completed in three years.

Students completing the Course in Arts receive the degree of Bachelor of Arts. Students completing the Course in Letters and Science, of the Course in Science, receive the degree of Bachelor of Science, those completing the course in Letters receive the degree of Bachelor of Letters.

Students who do not propose to pursue all the studies of any of the regular courses are permitted, under the name of Special Students, to recite with any class in such studies as, upon examination, they are found qualified to pursue.

### *SCHOLARSHIPS.*

There are numerous Scholarships. These differ in value, some remitting the charge for tuition, and others both the charge for tuition and that for room-rent in whole or in part. For holders of Scholarships remitting the entire charges for tuition and room-rent, the Treasurer's bills are reduced to \$42.50; and the necessary expense of such students including board and other personal items will not exceed \$250, or \$300 a year.

For Catalogues apply to the President or Secretary of the Faculty.

---



---

## The Wm. H. Post Carpet Co., 219 Asylum St.

Worth your while if you think of CARPET BUYING?

EXAMINE QUALITIES, COMPARE

VALUES, and see where you  
get BEST RESULTS.

THE WM. H. POST CARPET CO.,  
219 Asylum St., Hartford, Ct.

DR. L. G. CHAPMAN,  
DENTIST,

No. 36 Pratt Street.

Over Ripley Bros.

**NATIONAL  
FIRE INSURANCE COMPANY,**  
OF HARTFORD.

Statement, January 2, 1893.

Capital Stock, all cash, . . . . .	\$1,000,000.00
Funds reserved to meet all liabilities. {	
Reinsurance Reserve, . . . . .	\$1,406,936.11
legal standard, \$1,406,936.11	
Unsettled losses and other claims, \$258,625.22	\$1,665,561.33
Net Surplus over Capital and all Liabilities, . . . . .	\$487,892.74
Total Assets, January 2, 1893, . . . . .	\$3,153,454.07
JAMES NICHOLS, <i>Pres't.</i> E. G. RICHARDS, <i>Sec'y.</i> B. R. STILLMAN, <i>Ass't Sec'y.</i>	

OSBORN & PRICE, Local Agents, 39 Pearl St., Hartford, Ct.

**OLDS & WHIPPLE,**

249 Main Street and 164-166-168 State Street.

**House Furnishing Goods.**

Art Porcelains and China, Library and Piano Lamps,  
Dinner Sets, Chamber Sets, etc.  
Hard Wood Mantels, Art Tiles, Brass Goods,  
Fire place Fixtures,

**RICHMOND RANGES.**

Hot Air Furnaces, Steam and Hot Water Heaters.

**SEIDLER & MAY,**

Wholesale and Retail Dealers in

**Fine Furniture,**

CHAMBER SUITS, COUCHES,

BOOK CASES, ETC.

Nos. 306 to 318 Pearl Street,

HARTFORD, CONN.

**THE PARK DRUG CO.**

CIGARS, CIGARETTES. Wines and Liquors for Family and Medicinal uses. Toilet and fancy articles.

376 Asylum Street, Hartford, Conn.

One Block from Union Depot.

**HURD, MELLEN & HEWES,**

Importers, Wholesale and Retail Dealers in

CHINA, GLASSWARE, LAMPS, ROCHESTER  
LAMPS, BRIC-A-BRAC, TOILET SETS, ETC.

C. F. HURD,  
M. MELLEN  
D. N. HEWES.

255 Main St., Hartford, Conn.

**The Columbia  
Standard Bicycle  
of the World,**

graceful, light, and strong, this product of the oldest bicycle establishment in America still retains its place at the head. Always well up to the times or a little in advance, its well-deserved and ever increasing popularity is a source of pride and gratification to its makers. To ride a bicycle and not to ride a Columbia is to fall short of the fullest enjoyment of a noble sport.

Pope Mfg. Co.,

Boston, New York,

Chicago, Hartford.

A beautiful illustrated catalogue free at any Columbia agency, or mailed for two two-cent stamps.

**R. S. Peck & Co.** Printers and Wood Engravers.

*Class Printing, Fraternity and Embossed Work a Specialty.*

**Trinity** STERLING SILVER NOVELTIES.

HEADQUARTERS FOR

**Trinity Souvenirs.**

DIAMONDS, WATCHES AND JEWELRY. Repairing of Watches, Jewelry, etc. a Specialty

**DAVID MAYER,**

DIAMONDS, JEWELRY, AND OPTICAL GOODS. **319 Main Street.**

**GEORGE PRUTTING, JR.,**

MEMBER OF AMERICAN SOCIETY OF PROFESSORS OF DANCING, NEW YORK.

**Private Dancing Academy,**

HARTFORD FIRE INSURANCE CO. BUILDING, 53 TRUMBULL ST., HARTFORD, CONN. P. O. Box 808.

PRIVATE LESSONS AND SELECT

**CLASSES IN DANCING.**

Season Commences Sept. 1, 1893. Academy Open Daily. From 9 A. M. TO 10 P. M.

**L. A. WILEY'S**

**NEW ART STORE,**

Manufacturer and Dealer in MOULDINGS, PICTURE FRAMES, EASELS, &c. PICTURES FRAMED AT SHORT NOTICE.

No. 251 Pearl Street, Hartford, Conn.

**The Heublein,**

**Hartford, Conn.**

At the Junction of Lewis, Wells and Trumbull Streets, FACING BUSHNELL PARK.

A Modern Hotel on the European Plan. Hot and cold water in every room, also steam and open fire places. The only House in the United States furnished throughout with imported rugs.

G. F. HEUBLEIN & BRO., Proprietors.

**THE ERNST SCHALL CO.**

CORNER MAIN AND ASYLUM STREETS,

**Manufacturing Jewellers,**

AND

*Importers of Diamonds and Watches.*

Agent for Arundel Spectacles and

Aguste Saltzman Celebrated Watches

**Sterling Silver,**

Fine Bric-a-Brac,

Rich Cut Glass,

FOR

**WEDDING GIFTS, HENRY KOHN & SONS,**

No. 360 MAIN STREET.

STATEMENT OF THE CONDITION OF THE

**ÆTNA INSURANCE COMPANY,**

HARTFORD, CONN.,

On the 31st day of December, 1893.

Cash Capital, . . . . .	\$4,000,000.00
Reserve, Re-Insurance, (Fire,) . . . . .	3,089,262.12
Reserve, Re-Insurance, (Inland,) . . . . .	53,055.44
Reserve, Unpaid Losses, (Fire,) . . . . .	453,171.01
Reserve, Unpaid Losses, (Inland,) . . . . .	66,609.86
Other Claims, . . . . .	134,634.76
<b>Net Surplus, . . . . .</b>	<b>3,010,933.45</b>
<b>Total Assets, . . . . .</b>	<b>\$10,807,666.64</b>

LOSSES PAID IN SEVENTY-FIVE YEARS, Seventy-Two Million Seven Hundred and Fifty-Six Thousand Dollars.

WILLIAM B. CLARK, President. WM. H. KING, Secretary. JAS. F. DUDLEY, Vice-Pres't. E. O. WEEKS, F. W. JENNESS, Ass't Secretaries.

IT IS THE SAME OLD CRY "SAVE  
THE DOLLARS."

If you will let us we will save them for you  
**N. B. BULL & SON,**

189 and 191 MAIN STREET.

**H. E. PATTEN'S**  
**DYE HOUSE AND CARPET CLEANING WORKS,**  
No. 37 WELLS STREET.

Laces, Curtains, Carpets, Kid Gloves, etc., cleaned  
or dyed. Ladies' and Gentleman's Garments of every  
description dyed or nicely cleaned without ripping.  
Also Carpet Warp, both white and colored, for sale.  
Feather Beds renovated.

Packages sent by express will meet with prompt attention  
according to directions.

**C. B. BOARDMAN,**

**Hack, Livery <sup>AND</sup> Boarding Stable,**

No. 104 Main St., Hartford, Conn.

**STUART,**  
*Photographer.*

Special attention and reduction in rates to those connected  
with Trinity, and other Institutions of Learning.

Pleasing Portraits at the New and Elegant Studio.  
**271 MAIN STREET. HARTFORD, CONN.**

**BROWN, THOMSON & CO.**

Have always on hand a full assortment of

—GENT'S—

**FURNISHING GOODS!**

*AT POPULAR PRICES.*

Gloves, Ties, Scarfs, Collars and Cuffs, Hosiery, Under  
Clothing, Handkerchiefs, &c.

**BROWN, THOMSON & CO.**

Nos. 398, 400 and 402 MAIN STREET, Cheney Block.

**John Valenza,**  
**HAIR DRESSING SALOON,**  
No. 3 Asylum St., One door from Main St.,  
Hartford, Conn.

College Men's Hair Cutting a Specialty.

**JOSEPH GILLOTT'S**  
**STEEL PENS**

Nos. 303-404-170-604,

*And other styles to suit all hands.*

**THE MOST PERFECT OF PENS.**

Fall and Winter Styles and Latest Novelties in  
**Suitings and Trouserings**

MAY BE FOUND AT

**F. P. BOGANI'S,** MIDDLETOWN,  
CONN.

244 MAIN STREET, OPPOSITE P. O. UP STAIRS.

**JESSE N. LIND,**

SUCCESSOR TO ALEX. CURRIE.

**CUSTOM BOOTS AND SHOES.**

REPAIRING NEATLY DONE.

No. 110 Retreat Avenue,

Hartford, Conn.

**ALLYN HOUSE BARBER**

**AND BATHING ROOMS.**

EVERY WORKMAN AN ARTIST.

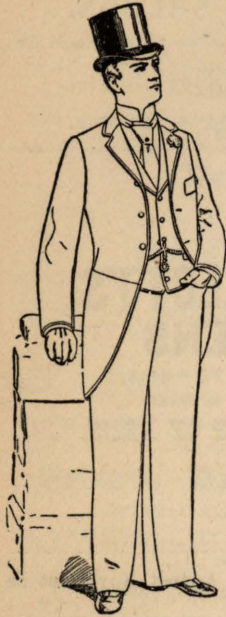
**Harvey & Lewis,**

*OPTICIANS,*

SPECTACLES AND EYE GLASSES.

No. 347 Main Street, Hartford, Conn.

## Tell it Gently,



*Lest it unnerve our Old Fashioned Tailoring Friends.*

*We are making to measure the Long Three Button Cut-away Frock Suits of Medium weight Black Diagonals, "Clay Pattern warranted not to gloss,"*

*For \$20.*

*with bound edges and lined in a fashion that attests wear and shows to best advantage.*

**WE ARE MODERN  
CUSTOM TAILORS**  
*and we are modest about the Price too.*

*Nicoll*  
*The Tailors*

50 and 54 Asylum St.,  
Hartford, Conn.

## Stationery for Students.

MESSRS. TIFFANY & Co.'s Experience of over fifty years in studying the requirements of Students in Universities, Academies and Schools, enables them to offer College Stationery, Invitations to Commencement Exercises, Receptions and Dinners, Menu Cards, Orders of Dance, Fraternity Dies, Engrossed and Illuminated Resolutions and other work, of a superior order of excellence and at prices **as reasonable as is compatible with good workmanship.**

**Correspondence Invited.**

**TIFFANY & CO.,**  
UNION SQUARE, NEW YORK.

**N. J. Goodwin, M. D. S.**

DENTAL ROOMS  
275 Main Street.

Hartford, Conn.

**P. H. BILLINGS,**  
*Importing Tailor,*

No. 11 Asylum Street.

**THE HARTFORD LIFE AND  
ANNUITY INS. CO.**

*furnishes THE BEST insurance for the least money under its Unequaled SAFETY FUND SYSTEM. Liberal Policy, Perfect Security, Continuous Dividends. Forty Thousand policy holders are insured for nearly Ninety Million Dollars.*

**INVESTIGATE THIS PLAN AND YOU  
WILL TAKE NO OTHER**

*Home Office, Hartford, Conn.*

**NO OFF SEASON**

**YALE  
MIXTURE**

A DELIGHTFUL  
BLEND OF THE VERY  
BEST SELECTED  
LEAF AND IS THE  
IDEAL  
GENTLEMAN'S SMOKE.

a 2 oz. trial package  
by mail post paid for  
— 25 CENTS —

**MARBURG BROS.**  
BALTIMORE, MD.

**THE NEAL, GOFF & INGLIS CO.,** Successors to THE WM. H. POST CO.,  
**Japanese Rugs in Carpet Sizes, \$6.50, \$9.00, \$13.50, \$15.00,**

No greater expense than ordinary Ingrain Squares.

Portieres at \$5.00 per pair. Best selection and value in Hartford.

428 MAIN STREET.



**RICHMOND  
 STRAIGHT CUT No. 1  
 CIGARETTES.**

CIGARETTE SMOKERS who are willing to pay a little more than the price charged for the ordinary trade Cigarettes will find THIS BRAND superior to all others.

THE RICHMOND STRAIGHT CUT No. 1 CIGARETTES are made from the brightest and most delicately flavored and highest cost **Gold Leaf** grown in Virginia. This is the **Old and Original Brand of Straight Cut** Cigarettes, and was brought out by us in the year 1875.

**Beware of Imitations** and observe that the firm name as below is on every package.

**ALLEN & GINTER, THE AMERICAN TOBACCO CO.,**  
 Successors, Manufacturer, Richmond, Virginia.

J. J. SEINSOTH, Licensed Pharmacist.

∴ NEAREST DRUG STORE TO TRINITY COLLEGE. ∴

Drugs, Chemicals, Pure Liquors, Cigars, and everything to be found in a first-class drug store.

12 Maple Avenue.

∴∴

43 Congress Street.

A TRIP TO THE WORLD'S EXPOSITION!

..... **SHEPP'S WORLD'S FAIR PHOTOGRAPHED.** .....

**OFFICIAL.** It is the only original, authorized and complete photographic panorama of the marvelous buildings, exhibits, scenes and surroundings of the World's Columbian Exposition. **SOLD BY SUBSCRIPTION ONLY.**

Persons desiring to subscribe for or examine this work, please send me a postal, **M. B. KILDUFF, Bristol, Ct.**

**HARK!**

Is that the muskets' rattle,  
 That the dread smoke of battle,  
 Carnage-ripe,  
 Or the Major-General's buttons,  
 With their war-like concussions,  
 And his pipe?—*Columbia Spectator.*

**The Andrus & Naedele Co.,**

Headquarters for Sporting and Athletic Goods.

*Also Fishing Tackle, Guns, and Ammunition.*

**BICYCLES AND BICYCLE SUNDRIES.**

272 Asylum Street.

Go to **CHAS. R. HART & CO.,** for your  
**— CARPETS, ∴ DRAPERIES ∴ AND ∴ SHADES. —**

Largest assortment in the city and at Lowest Prices.





—THOROUGH INSPECTIONS—

AND

Insurance against loss or damage to property and loss of life and injury to persons caused by

**Steam • Boiler • Explosions.**

J. M. ALLEN, President.

WM. B. FRANKLIN, Vice-President.

F. B. ALLEN, 2d Vice-President.

J. B. PIERCE, Secretary and Treasurer.

If you wish to take REGULAR DAILY EXERCISE, and not be compelled to desist from work because of SORE MUSCLES, you must, after exercising, THOROUGHLY RUB the MUSCLES with

## Pond's Extract.

By its use you are made QUICK and ACTIVE, and ALL SORENESS, STIFFNESS, or SWELLING is prevented, and you will AVOID the DANGER of TAKING COLD on going out after exercising.

We have a book full of testimonials from the most famous athletes; to quote them is superfluous. Almost everyone in training uses it. But don't expect some cheap substitute for POND'S EXTRACT to do what the genuine article will, for you will surely be disappointed.

Manufactured only by

POND'S EXTRACT CO.,

76 Fifth Ave., New York.

## THE STUDENTS' BILLIARD PARLORS,

§—262 MAIN STREET,—§

MATT. H. HEWINS, Prop.

## F. SCHROEDER,

MANUFACTURER OF

### **Fine Confectionery,**

373 Main Street, Hartford, Conn.

## EDWARD LAWLER,

Sanitary Plumbing,

House Drainage,

and Ventilation.

Special attention given to the sanitary condition of residences.

Over forty years practical experience.

## HOT WATER AND STEAM HEATING.

Agent for the Celebrated Mahony Hot Water and Steam Boilers, the best boilers in the market.

Gas Fixtures and Plumbers' Materials always on hand.

Best quality of work at reasonable prices.

## EDWARD LAWLER,

160 Main Street, Hartford, Conn.

Established 1861.

## P. & J. BESSE, Caterers,

French and American Ice Creams, French Pastry, Confectionery Etc.

HARTFORD:  
239 Main Street

Telephone Connection.

BOSTON:  
167 Tremont Street.

**JOEL ZIFF**, ∴ 83½ Main Street,  
**Boots and Shoes at Lowest Prices.**

REPAIRING NEATLY DONE.

Sole and Heel, 75c. ∴ 85c. Same Hand Sewed, \$1.00 ∴ \$1.25

FINE BOOTS AND SHOES MADE TO ORDER.

# ENVELOPES

Writing Papers, Blank Books, Diaries,

*FINE PRINTING!*

SOCIETY STAMPING AND ENGRAVING,

AT THE

**Plimpton Manufacturing  
 COMPANY,**

250 Pearl Street, - Hartford, Conn.

## Hotel Capitol,

111 MAIN STREET,  
 HARTFORD, CONN.

*Headquarters  
 for those interested in  
 Trinity College.*

Only Family House in the city.

Rooms en Suite, with Private Bath.

— NO INSIDE ROOMS. —

Elevator and all Modern Improvements.

Special Rates to the Commercial Trade.

— Rates \$2.00 and \$2.50 per day. —

A. E. HOLCOMB, Proprietor.

## De Lamater & Son,

15 PRATT STREET,

Best Effects in Photography.

FIRST FLOOR STUDIO.

**CHARLES H. BELL,**

*Druggist.*

Large line of everything usually found in a first-class  
 drug store.

213 Main Street, under City Hotel.

## HERMAN BUCHOLZ,

∴ Theatrical and Fancy Dress Costumer. ∴

Costumer to '92-'93, Senior Dramatics, Smith College,  
 and Senior Dramatics, Amherst College.

Send for Catalogue.

275 Main St., Springfield, Mass.

## LARNED & HATCH,

—DEALERS IN—

\* **Gentlemen's Finest Shoes** \*

OF ALL DESCRIPTIONS.

*Shoes for Dress and Evening Wear,*

In all the Newest Designs.

CUSTOM WORK A SPECIALTY.

— 391 Main Street. —

LARGEST ASSORTMENT OF —

∴∴ **FANCY SMOKING TOBACCOS** ∴∴

— IN THE CITY. —

*ELEGANT LINE OF PIPES.*

↔ Imported and Domestic Cigars. ↔

**FRANK H. CRYGIER,**

48 State Street, opp. City Hall.

## Robert C. Witte,

*Cutlery and General Repairing.*

Lawn Mowers and Skates Sharpened in their season.

Also a fine line of Cutlery always on hand,

AT 57 MAIN STREET.

**HENRY COWLISHAW,**

**Razor Manufacturer and Cutler.**

Dealer in all kinds of FINE CUTLERY. Razors ground,  
 concaved and honed. Skates, Scissors, Shears, Cutlery  
 ground and repaired. Locksmithing.

Factory and Store, 160 and 162 Pearl Street.,

HARTFORD, CONN.

D. W. MITCHELL,

**BILLIARD and POOL PARLORS,**

Meerschaum Goods of all Kinds,

Also French Briar Goods.

215 Main Street (Under City Hotel.)

THE  
**Connecticut Mutual**

LIFE INSURANCE COMPANY.

ASSETS, **\$60,761,549.89.**

SURPLUS, **\$6,426,929.88.**

In 1892

Increased its Assets,

Increased its Surplus,

Increased its Dividends to Policy-Holders,

And invites attention to its economy of management, and the consequent low cost of insurance.

JACOB L. GREENE, President.

JOHN M. TAYLOR, Vice-President.

EDWARD M. BUNCE, Secretary.

DANIEL H. WELLS, Actuary

**Hartford Decorating Company.**

*Decorations for Fairs, Balls, Festivals, and  
Public Celebrations.*

**FLAGS, BUNTING, ETC.**

J. ALEX. McCLUNIE, 177 ASYLUM STREET  
Hartford, Conn.

THE  
**Phoenix Insurance Company,**

OF HARTFORD, CONN.

STATEMENT JAN. 1, 1892 :

Cash Capital,	- - - - -	\$2,000,000 00
Reserve for Unadjusted Losses,	- - - - -	391,248 30
Reserve for Re-Insurance.	- - - - -	1,950,683 68
Net Surplus,	- - - - -	1,334,460 81

**TOTAL ASSETS, - - \$5,676,386 79**

**Total Losses Paid Since Organization of Company, \$29,027,788.02**

D. W. C. SKILTON, President. J. H. MITCHELL, Vice-President,  
GEO. H. BURDICK, Secretary. CHAS. E. GALACAR, 2d Vice-Pres'  
JOHN B. KNOX, Ass't Secretary.

H. M. Magill, General Agent Western Department, Cincinnati, O.  
Theo. F. Spear Ass't "  
A. E. Magill, General Agent Pacific Department, San Francisco, Cal.  
Gerald E. Hart, Gen'l Manager Canadian Dep't, Montreal, Canada.

E. W. Beardsley, Resident Agent, 64 Pearl St., Hartford, Ct.

**PERSONAL:**—The Trinity man who wishes anything in the line of Notions and Small Wares, Furnishings, Stationery, Newspapers, &c., should call at CHAPIN'S BAZAR, 93 Main St.

Anything from a Banjo String to a Fine Shirt, and prices right. Agency of Scott Stamp and Coin Co. Foreign and U. S. Stamps. Scott's Stamp Catalogues &c

**COLLEGE PRINTING AND BINDING.**

**C**LASS YEAR BOOKS, Periodicals etc. Sermons, Addresses, Catalogues and Society Publications. Superior Work at Fair Prices.

Libraries re-bound and repaired. Patent Flat Opening Blank Books to order.

THE CASE, LOCKWOOD & BRAINARD CO., Printers and Binders,  
HARTFORD, CONN.

*EDMOND GOULET,*  
**THE "HEUBLEIN" BARBER SHOP**

MULBERRY STREET.

**COLLEGE COMMONS,** Mrs. M. R. Muzzy,

PROPRIETOR.

LEMONADE, CHOCOLATE, CRACKERS, AND  
MEALS SERVED TO ROOMS.

CIGARS AND TOBACCOS

THE J. H. ECKHARDT CO.  
PICTURES.

ARTISTIC FRAMING.



231 and 237 Main St.,  
HARTFORD, CONN.

THE MERCANTILE NATIONAL BANK  
OF HARTFORD.

56 Pearl Street.

Capital, \$500,000. Surplus, \$36,000.

JAMES B. POWELL, President.

JOHN W. STEDMAN, Vice President.

EDWIN BROWER, Cashier.

DIRECTORS.

RALPH CHENEY,  
WM. T. PARKS,  
JAMES B. POWELL,  
CHARLES E. CHAFFEE,

ERNEST CADY,  
NATHAN T. PULSIVER,  
JOHN W. STEDMAN,  
WILLIAM WALDO HYDE,  
J. H. MITCHELL.

You can find no better SILVER PLATED

KNIVES, FORKS, SPOONS  
than those stamped



Retailed at our SILVER WARE PARLORS,  
66 Market Street.

ALSO SOLID SILVER.

THE WM. ROGERS MFG. CO.

Horsfall & Rothschild,  
HATTERS AND

MENS' OUTFITTERS,

AGENTS FOR YOUUMAN'S AND KNOX'S HATS.  
Shirt Makers. Complete line of Athletic  
Suits.

93 and 95 ASYLUM ST., HARTFORD.

THE BONNER-PRESTON COMPANY,

DEALERS IN

ARTISTS' MATERIALS,

CAMERAS, KODAKS,

AND A FULL LINE OF

Photographic Supplies.

329 Main Street,

Hartford, Conn.

J. J. POOLE & CO.

HARD AND SOFT WOOD

For Grate, Stove and Kindlings, by the Barrel or Cord.

COAL;

Best Quality Lehigh (Sugar Loaf) and Lackawanna for  
Domestic Purposes.

Office: 272 Main St., Trust Co.'s Building.

USE

Hartford Smelling Salts,

MANUFACTURED BY

T. SISSON & CO., HARTFORD.

25c. a Bottle. Postpaid 30c.

TURKISH, ROMAN, AND RUSSIAN BATHS,  
ALSO MASSAGE TREATMENT.

GEO. E. JONES, Proprietor,

199 Main Street.

NO OTHER Life Policies as liberal cost as little money, no others as cheap give as much for the money, as those of

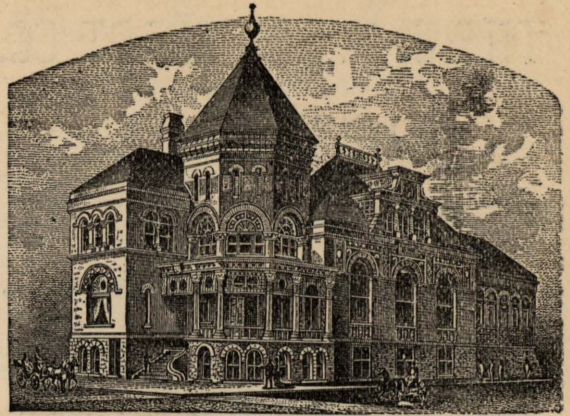
# THE TRAVELERS

OF HARTFORD, CONN.

Best either for Family Protection or Investment of Savings, Non-forfeitable, world wide, lowest cash rate.

Assets,	-	-	-	\$15,929,000
Surplus,	-	-	-	2,579,000
Paid Policy-Holders,	-	-	-	\$23,500,000

JAS. G. BATTERSON,                      RODNEY DENNIS,  
 President.                                      Secretary.  
 JOHN E. MORRIS, Ass't Sec'y.



## THE CONNECTICUT FIRE INSURANCE CO.

OF HARTFORD, CONN.

Cash Capital,	-	-	\$1,000,000.00
Cash Assets,	-	-	\$2,809,697.81

J. D. BROWNE, *President.*  
 CHARLES R. BURT, *Secretary.*  
 L. W. CLARKE, *Ass't Secretary.*

### STRANGE.

A man sat reading at the club,  
 Well versed in prose and rhymes;  
 And spite of culture, this remains,  
 He was behind the times!  
 — *Williams Weekly.*

## HENRY ANTZ,

Barber,



27 Pearl Street.

*First Class Work Guaranteed.*

P. H. B. SAUNDERS & SON,

Merchant Tailors,

No. 258 Main Street.

It may interest you to know that we cater for the college trade. We are the leaders in fine goods, correct styles and popular prices. Full line of dress goods, Bows, Shirts, Gloves and Vests.

FOWNE'S CELEBRATED GLOVES.

Welch, Margetson's English Neckwear, Smoking Jackets, and House Gowns.

The finest line of 50c. Neckwear in New England.

The best \$4.00 Hat on the market.

SOLE AGENTS FOR E. & W. COLLARS AND CUFFS.

**E. J. SMITH & CO.,**

65, 67 and 69 ASYLUM STREET.

FURNISHERS AND HATTERS.

*Established 1872.*



J. W. Harper, D. D. S.,

WAVERLY BUILDING, 253 MAIN STREET.

Telephone No. 404-3.

**JAMES AHERN,**

SPECIALTIES IN

—Gas and Electric Light Fixtures.—

Plumbing, Steam and Gas Fitting.

GAS RADIATORS and GAS STOVES.

280 Asylum St.

Hartford, Conn.

**Soby's Cigars.**

FINE PIPES AND SMOKERS' ARTICLES

FOR STUDENTS' TRADE.

349 Main Street, Hartford, Conn.

L. G. WILEY,

156 Pearl Street, Hartford, Conn.

*Fine Printing AT Bottom Prices*

All kinds of mercantile printing. Specialties made of society work  
All orders will receive careful and prompt attention.

**THIS SPACE BELONGS TO**

**M. C. MESERVEY,**

DEALER IN MUSICAL INSTRUMENTS OF ALL SORTS.

STRINGS FOR MANDOLIN, GUITAR AND BANJO A SPECIALTY.

119 MAIN STREET.

## LIFE AND ACCIDENT INSURANCE.

## SUMMARY

OF THE

## 44th Annual Statement

OF THE

## AETNA

LIFE INSURANCE COMPANY,  
OF HARTFORD, CONN.,

January 1, 1894.

Premium Receipts in 1893, . . . . .	\$4,809,733.15
Interest Receipts in 1893, . . . . .	2,000,340.94
Total Receipts during the year, . . . . .	6,810,074.09
Disbursements to Policy-holders, and for ex- penses, taxes, &c., . . . . .	5,175,778.52
Assets, January 1, 1894, . . . . .	40,267,952.90
Total Liabilities, . . . . .	33,941,030.81
Surplus by Conn. and Mass. standard, . . . . .	6,326,922.09
Policies in force January 1, 1894, 82,745, in- suring, . . . . .	135,450,722.94
Policies issued in 1893, 11,748, insuring, . . . . .	23,381,374.00
Accident Policies issued in 1893, 7,236, insuring, . . . . .	26,033,450.00

MORGAN G. BULKELEY, President.

J. C. WEBSTER, Vice-President.

J. L. ENGLISH, Secretary.

H. W. ST. JOHN, Actuary.

GURDON W. RUSSELL, M. D.,

Medical Director.

## HORACE PARTRIDGE &amp; CO.,

335 Washington Street, Boston.

COLLEGE  
Athletic Outfitters,

MR L. L. LEONARD of the "Trinity College Store" is our authorized agent at Trinity  
All orders given him will receive our prompt and most careful attention.

## THE COLLEGE BOOK STORE,

TEXT BOOKS, STATIONERY AND ATHLETIC GOODS.

NO. 2 NORTHAM TOWER.

## CHARLES A. RAPELVE,

APOTHECARY,  
PRESCRIPTIONS A SPECIALTY.

A LARGE LINE OF TOILET GOODS.

825 Main Street, Hartford, Conn.

## United States Hotel,

City Hall Square,

Hartford, Conn.

Street Cars to and from Depot.  
Free Coach.

Rates: \$1.00, \$1.50 and \$3.00.

D. A. ROOD,

Proprietor

### CONNECTICUT TRUST AND SAFE DEPOSIT COMPANY,

Corner of Main and Pearl Streets.

Capital, \$300,000. Surplus, \$200,000.

#### BANKING BUSINESS.

Conducts a General Banking Business. Accounts opened and Deposits received subject to check at sight. Accounts solicited. Also

#### SAFE DEPOSIT VAULT.

The most capacious and impregnable in the City. 1000 safe boxes for rent at from \$10 to \$100 per annum, according to size.

#### TRUST DEPARTMENT.

Is authorized by its charter to act as Trustee for individuals and corporations, Executor or Administrator of estates, Guardian of minors, etc.

Meigs H. Whaples, President.

Henry S. Robinson, Secretary.

John P. Wheeler, Treasurer.

Hosmer P. Redfield, Ass't Treasurer.

### Gemmill, Burnham & Co.

Have received their line of

SPRING SUITS AND OVERCOATS

from \$10.00 to \$25.00. All the latest patterns.

GEMMILL, BURNHAM & CO.

FULL DRESS SUITS TO RENT.

### 1851 A CORPORATION 1896

having Forty-five Years' Successful Business experience offers for sale

#### 5 Per Cent., 20 Year Income Bonds,

which are just as good as Governments.

For prospectuses, terms, etc., address the PHOENIX MUTUAL LIFE INSURANCE COMPANY, Hartford, Ct., or agents in any of the larger cities or towns.

JONATHAN B. BUNCE, President.

JOHN M. HOLCOMBE, Vice-President.

CHARLES H. LAWRENCE, Secretary.

Translations  
 Literal — Interlinear — 105 Volumes  
 Dictionaries  
 German, French, Italian, Spanish,  
 Latin, Greek  
 Tutorial Series  
 200 vols. specially designed for coaching for exams. in all college studies  
 Hinds & Noble  
 Succeeding Arthur Hinds & Co.  
 4 Cooper Institute, New York City

— TRY —

## HARTFORD COAL CO.

278 Main St.

Patronize our Advertisers



FINE WORK.

MODERATE PRICES.

E. P. CAHILL,  
 DRAPER AND TAILOR,  
*Suits to Order from \$15 to \$50.*  
 49 Pratt Street,  
 Near Trumbull St.,  
 Hartford, Conn.

DELAMATER & SON,  
 15 Pratt Street, . . . . Hartford, Conn.  
 ———— REALLY ————  
 are the Most Satisfactory Photographers in the City

N. J. Goodwin, M. D. S.  
 DENTAL ROOMS,  
 275 Main Street, Hartford, Conn.

**A STRAIGHT TIP  
 FOR  
 ATHLETES  
 EVERYWHERE.**

Every Bruise, Cut, Sore Muscle, Stiff Joint or Strain, fees from Johnson's Anodyne Liniment as from a wrath to come. Acts promptly. Always ready to use.

**TRUST**

*What Time Has Endorsed*

Stops Pain, Cramps, Inflammation in Body or Limb like magic. Cures Summer Complaints, Colic, Cures Coughs, Asthma, Colds, Catarrh, Cholera Morbus, Diarrhoea, Rheumatism, Neuralgia and Lame Back.

**JOHNSON'S  
 Anodyne Liniment**

Was originated and first prescribed by AN OLD FAMILY PHYSICIAN, in 1810. Could a remedy without real merit have survived over eighty years?

**THINK OF THAT**

Generation after Generation

*Have Used It.*

For INTERNAL as much as EXTERNAL use.

Every Traveler should have a bottle of it in his satchel. It is Soothing, Healing, Penetrating. Once used always wanted; and dealers say "Can't sell any other kind." Full particulars sent free. Sold by all Druggists. Price, 35 cents. Six, \$2.00. If you can't get it send to us. I. S. JOHNSON & CO., 22 Custom House St., Boston, Mass.

Established 1818.

*Our stock for Spring and Summer of 1897, beside the usual standard goods, contains many seasonable novelties, including garments for outing and country wear, to which we invite your particular attention.*

We have added to our department of ready-made Clothing a line of Clerical Garments, subject to the usual discount for Clergymen.

**BROOKS BROTHERS,**

Clothing and Furnish-  
 ing Goods Ready-Made  
 and Made to Measure.

Broadway, cor. 22d St.,  
 New York City.

LEADING STYLES.

POPULAR PRICES.

P. H. BILLINGS,

*High Class Tailoring,*

11 ASYLUM ST.,

HARTFORD, CT.

*Our Printers*  
 362 Main St., Hartford.  
**CLARK AND SMITH**  
 In business thirty-two consecutive years.

LET US DO YOUR PRINTING.