



THE TRINITY IVY  
1966

*AUTUMN BORN*



*Edwin*



Fred MacLean Dole

TRINITY COLLEGE, HARTFORD, CONNECTICUT

the  
1962  
at  
Trinity  
Army





## DEDICATION



trustees, faculty  
& administration



IVY MASS



*Seniors*



fraternities



## ACTIVITIES



*Sports*



## ADVERTISEMENTS

editor-in-chief

RICHARD DEAN TUTTLE

managing editor

HAROLD KIRBY VICKERY, JR.

photography editor

FRED McLEAN DOLE

literary editor

MALCOLM LLOYD

sports editor

ARNOLD SETON WOOD

activities editor

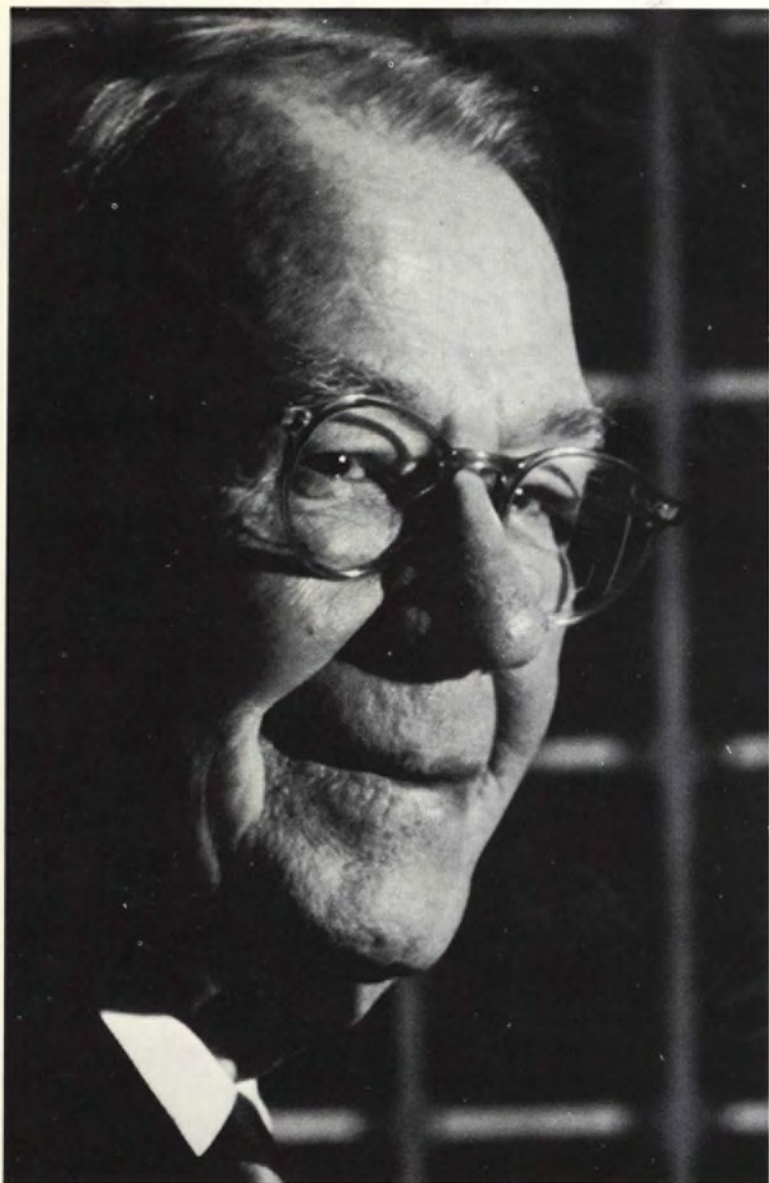
WILEY ANDERSON JONES, JR.

advertising manager

DAVID FINLAY PYLE

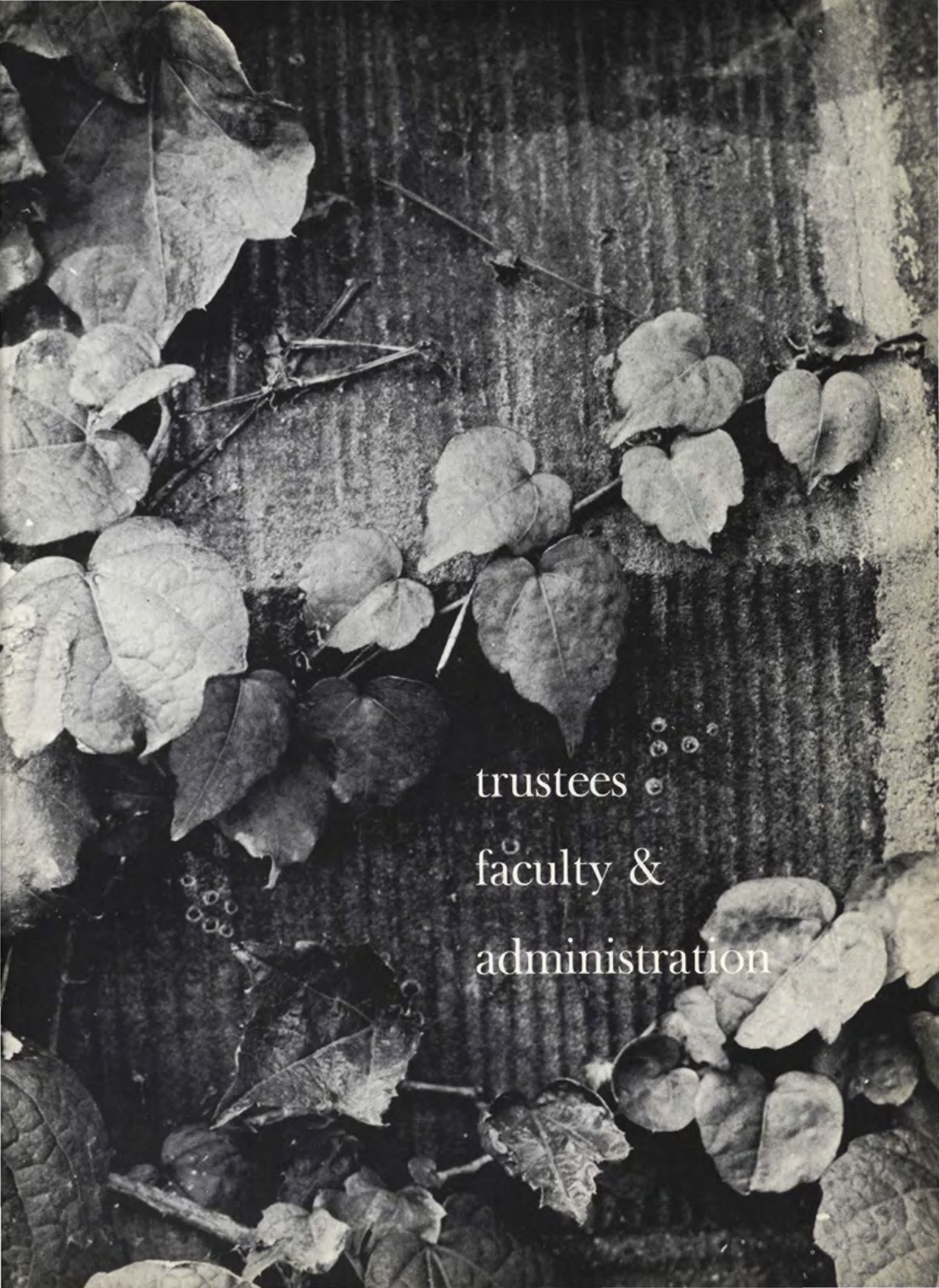
business manager

THOMAS ARTHUR GARSON



## **DEDICATION**

. . . to Francis "Cap" Horan  
for sixteen years  
of postal service.



trustees  
faculty &  
administration



## trustees



*Seated, left to right: Philip J. McCook (Resigned October 14, 1961), James L. Goodwin; Standing, left to right: Albert C. Jacobs, Martin W. Clement, Vertrees Young, Robert B. O'Connor, Karl W. Hallden, George M. Ferris, John R. Cook, Henry S. Beers, Allerton C. Hickmott, Arnold H. Moses,*

*Lyman B. Brainerd, Robert S. Morris, John R. Reitemeyer, Raymond J. Wean, Harmon T. Barber, Barclay Shaw, George W. Wyckoff; Not present when picture was taken: Paul W. Adams, Bern Budd, Ostrom Enders, G. Keith Funston, The Rt. Rev. Walter H. Gray, Glover Johnson, Jerome P. Webster.*

Traditionally the unregarded, the unperceived, the unobserved, and the unpaid members of an institution of higher learning are the Board of Trustees. The relationship of these master planners to our society at Trinity is no different. Beneath their crystal chandelier, the framers of our policy complete their job with the utmost expediency and efficiency.

The Trustees are usually thought of only in relation to financial matters concerning the College, and are held to be simply ministers of

the exchequer. This is not, however, their only important function. Among others, their duties also consist of bestowing upon the worthy literary and academic degrees, keeping scholarship at a high level and by choosing reputable professors and instructors, and maintaining a sound, liberal curriculum.

Contrary to common belief, this group of dedicated men do not simply work with Trinity College, but they are Trinity College.

# faculty

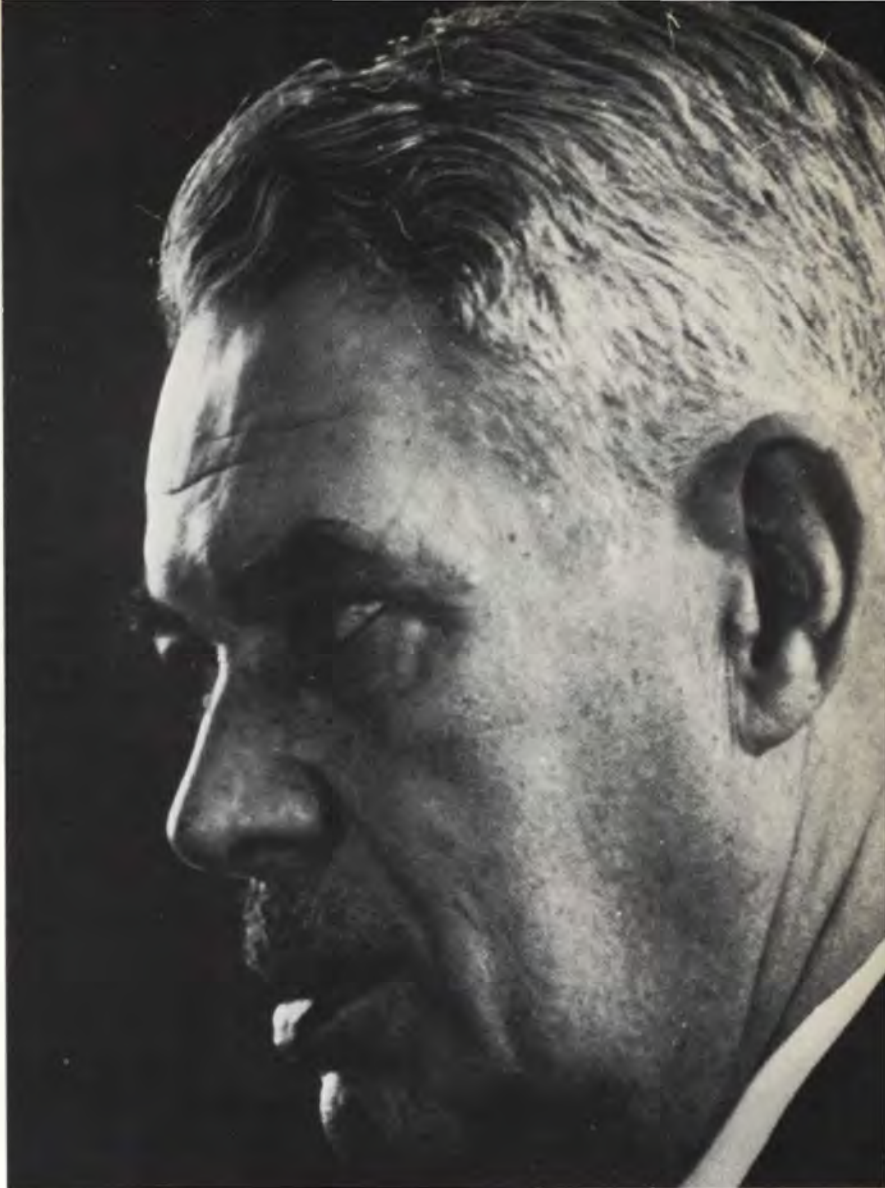
A president of an organization should be a person whose attitude is such that it acts as a motivating force for those people who come in contact with him. Here at Trinity we are fortunate in having such a man as our leader, Albert Charles Jacobs.

Long associated with higher learning, our President received his Bachelor of Arts degree, "with highest distinction," from the University of Michigan in 1921 and was elected to Phi Beta Kappa. He won the honor of representing Michigan as a Rhodes Scholar and studied at Oxford from 1921 to 1924. At Oxford he earned a B.A. in Jurisprudence, with First Class Honors, in 1923, a Bachelor of Civil Law in 1924, and a Master of Arts in 1927. Since 1950 Dr. Jacobs has been awarded honorary degrees from thirteen colleges and universities.

President Jacobs joined the faculty of Columbia University in 1927 as a Lecturer in Law. He rose through the ranks, becoming a Professor of Law in 1937; and in 1947 he was elected Provost of the University under President Dwight D. Eisenhower.

During World War I Dr. Jacobs saw brief service as a private in the United States Army. In World War II, from 1942 to 1945, he was Director of the Dependents Welfare Division in the Bureau of Naval Personnel. At the time of his separation from the Navy he had attained the rank of Captain and was a recipient of the Legion of Merit.

After serving as Chancellor (equivalent to President) of the University of Denver from November, 1949 to March, 1953 Dr. Jacobs came to Trinity as the fourteenth President of the College. Now in his ninth year of service to Trinity, President Jacobs has made a significant contribution to the educational, spiritual and economic life of the College.



ALBERT CHARLES JACOBS  
President



### ARTHUR HOWARD HUGHES

Vice President, Dean, Professor of Modern Languages and Chairman of The Board of The Cesare Barbieri Center for Italian Studies; B.A., M.A., Ph.D. Johns Hopkins, 1927, 1929, 1931; M.S., L.H.D. Trinity, 1938, 1946; Assistant Professor in German, George Washington University, 1931-1934; Acting President, Trinity College, 1943-1945 and 1951-1953; Appointed to the faculty in 1935; Phi Beta Kappa, Pi Gamma Mu.



### OSBORNE WILSON LACY

Dean of Students and Associate Professor of Psychology; B.A. Hampden-Sydney, 1947; A.M., Ph.D. Pennsylvania, 1951, 1955; Assistant Professor of Psychology and Associate Director of the Guidance and Counseling Center, Hampden-Sydney, 1953-1955; Appointed to the faculty in 1955; Pi Gamma Mu, Sigma Xi, Tau Kappa Alpha, Eta Sigma Phi, Sigma Epsilon, Phi Delta Epsilon, Psi Chi.



### ROBERT MAIER VOGEL

Dean of Graduate Studies and Director of Summer School; B.A. Wabash, 1935; M.A. Michigan, 1940; Ed. D. Columbia, 1953; Secretary-Treasurer, New England Graduate Conference; Appointed to the faculty in 1947.

### VERNON KRIEBEL KRIEBLE

Scovill Professor of Chemistry, Emeritus; Ph.B. Brown, 1907; M.S., Ph.D. McGill 1909, 1913; Appointed to the faculty in 1920; Retired in 1955; Phi Beta Kappa.



### THURMAN LOS HOOD

Professor of English, Emeritus; B.A., M.A., Ph.D. Harvard, 1908, 1909, 1924; Appointed to the faculty in 1928; Retired in 1959; Phi Beta Kappa, Pi Gamma Mu.

### MORSE SHEPARD ALLEN

James J. Goodwin Professor of English, Emeritus; B.A., M.A. Wesleyan, 1912, 1913; M.A. Columbia, 1913; Ph.D. Princeton, 1920; Appointed to the faculty in 1920; Retired in 1961; Phi Beta Kappa.



### HAROUTUNE MUGURDICH DADOURIAN

Seabury Professor of Mathematics and Natural Philosophy, Emeritus; Ph.B., M.A., Ph.D. Yale 1903, 1905, 1906; Appointed to the faculty in 1919; Retired in 1949.



### EDWARD LEFFINGWELL TROXELL

Professor of Geology, Emeritus; B.A., M.A. Northwestern, 1908, 1909; Ph.D. Yale, 1914; Appointed to the faculty in 1919; Retired in 1954.

# AIR SCIENCE



**RICHARD BARTLETT OLNEY**

Professor of Air Science; B.S. Citadel, 1940; M. A. Trinity, 1961; Lieutenant Colonel, United States Air Force; Appointed to the faculty in 1959.



**JOHN FRANCIS LAMAR**

Associate Professor of Air Science; B.S. Florida Southern, 1958; M.A. Trinity, 1961; Major, United States Air Force; Formerly Flight and Academic Instructor, Air Force Transport School; Appointed to the faculty in 1959.



**MORTON ROYAL TRACY**

Associate Professor of Air Science; Major, United States Air Force; Formerly Associate Professor of Air Science, University of Akron; Appointed to the faculty in 1959.

**JOHN FRANCIS REGAN**

Lecturer in Air Science; B.S. Springfield, 1940; M.A. New Haven Teachers, 1953; Major, United States Air Force Reserve; Appointed to the faculty in 1956.



# BIOLOGY



**JULIEN LEVERNE  
CAGLE**

Instructor in Biology; A.B. Birmingham-Southern College, 1948; M.S. University of Tennessee, 1950; Formerly Instructor in Biology at Cumberland College (Kentucky) and Hollins College (Virginia); Graduate work toward Ph.D., Princeton University, in progress; Appointed to the faculty in 1959; Kappa Phi Kappa, Delta Phi Alpha, Sigma Xi.



**JAMES MORRILL VAN STONE**

Associate Professor of Biology; B.A. Wesleyan, 1949; M.S., Ph.D. Princeton, 1953, 1954; Research Grants for work in Experimental Embryology: National Science Foundation, 1955-1958 and National Institutes of Health, 1958-1962; Appointed to the faculty in 1954.

**JAMES WENDELL BURGER**

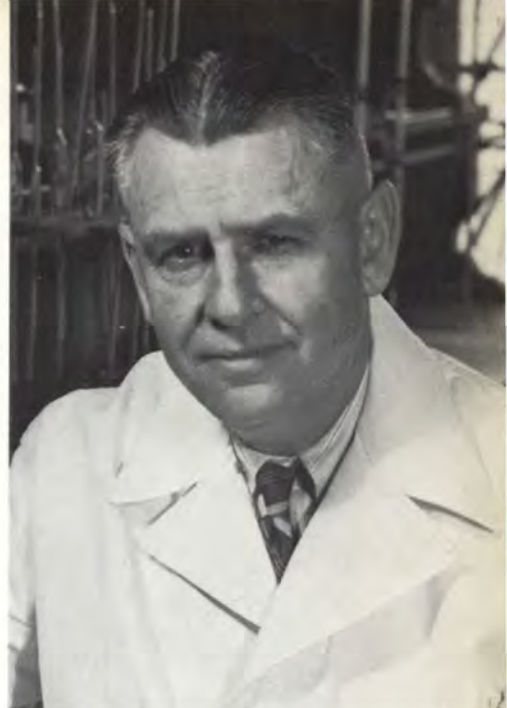
J. Pierpont Morgan Professor of Biology; A.B. Haverford, 1931; A.M. Lehigh, 1933; Ph.D. Princeton, 1936; Managing Director, Mt. Desert Island Biological Laboratory, 1948-1951; Commissioner, Connecticut State Geological and Natural History Survey; Director, Hartford Hospital; Research Grants: New York Hearst Association and National Institute of Health; Appointed to the faculty in 1936; Phi Beta Kappa, Sigma Xi.

# chemistry



**STERLING BISHOP SMITH**

Scovill Professor of Chemistry; Ph.B., M.S. Yale, 1920, 1923; Ph.D. New York University, 1927; Appointed to the faculty in 1923.



**ROBERT HENDERSON SMELLIE, JR.**

Professor of Chemistry; B.S., M.S. Trinity, 1942, 1944; Ph.D. Columbia, 1951; Appointed to the faculty in 1943; Phi Beta Kappa.



**GOODWIN BATTERSON BEACH**

Lecturer in Latin; A.B. Harvard, 1907; M.A. Trinity, 1931; Litt.D. Leeds, 1953; Four times received honorable mention in the *Certamen Capitolinum* (International Competition for Original Latin Composition); Appointed to the faculty in 1954; Phi Beta Kappa.



**WINFIELD SCOTT WORRALL**

Associate Professor of Chemistry; B.S. Haverford, 1942; M.A., Ph.D. Harvard, 1947, 1949; Appointed to the faculty in 1954.



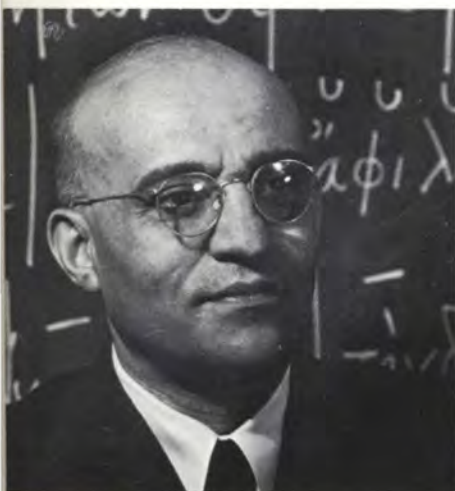
**EDWARD BOBKO**

Associate Professor of Chemistry; B.S. Western Reserve, 1949; Ph.D. Northwestern, 1952; Formerly taught at Northwestern and Washington and Jefferson College; Appointed to the faculty in 1955; Phi Beta Kappa, Sigma Xi.



**RAYMOND FLETCHER SNIPES**

Instructor in Chemistry; B.S. North Carolina, 1956; M.S. Yale, 1957; Appointed to the faculty in 1959; Phi Beta Kappa.



**JAMES ANASTASIOS NOTOPOULOS**

Hobart Professor of Classical Languages; B.A. Amherst, 1928; B.A., M.A. Oxford, 1930, 1934; Visiting Professor, Princeton, 1955-1956; Visiting Professor, Harvard, 1961-1962; Author of *The Platonism of Shelley*; Appointed to the faculty in 1936; Phi Beta Kappa.



**JOHN VICTOR LUCE**

Visiting Professor of Classical Languages; B.A., M.A. Trinity College (Dublin), 1942, 1945; M.A. Oxford, 1946; Since 1948 Fellow in Classics, Trinity College, Dublin and Lecturer in Dublin University; Appointed to the faculty in 1961.

# CLASSICS

**ALBERT MERRIMAN**

Associate Professor of Classical Languages; B.A., M.A. Harvard, 1933, 1937; Appointed to the faculty in 1948; Phi Beta Kappa.



# economics



LAWRENCE WILLIAM TOWLE

G. Fox and Company Professor of Economics; B.A. Bowdoin, 1924; M.A., Ph.D. Harvard, 1927, 1932; Principal Economist, Office of Alien Property Custodian, 1942-1943; Author of *Time Deposits and International Trade and Commercial Policy*; Appointed to the faculty in 1942; Phi Beta Kappa, Pi Gamma Mu.



LEROY DUNN

Assistant Professor of Economics; B.S. American University, 1949; Ph.D. London, 1956; Formerly Instructor, Brown University; Appointed to the faculty in 1957; Pi Gamma Mu.



RANDALL WILLIAM TUCKER

Associate Professor of Economics; B.A. Northeastern, 1939; M.B.A. Chicago, 1942; Appointed to the faculty in 1946; Pi Gamma Mu.



RICHARD SCHEUCH

Associate Professor of Economics; A.B., M.A., Ph.D. Princeton, 1942, 1948, 1952; Teaching Assistant and Preceptor, Princeton, 1946-1950; Woodrow Wilson Fellow, 1946-1947; Appointed to the faculty in 1950; Phi Beta Kappa, Pi Gamma Mu.



ROBERT ALDEN BATTIS

Assistant Professor of Economics; B.S.B.A. Rutgers, 1948; M.A., Ph.D. New York, 1952, 1958; Appointed to the faculty in 1959.



WARD SCHENK CURRAN

Instructor in Economics and George M. Ferris Lecturer in Corporation Finance and Investments; B.A. Trinity, 1957; M.A., Ph.D. Columbia, 1958, 1961; Appointed to the faculty in 1960; Pi Gamma Mu.



JAMES WARREN WIGHTMAN

Instructor in Economics; B.S. Franklin & Marshall, 1954; M.A. Clark, 1956; Formerly Teaching Fellow, Clark University; Appointed to the faculty in 1961.

# Education



**RICHARD KNOWLES MORRIS**  
Associate Professor of Education; B.A. Trinity, 1940; M.A., Ph.D. Yale, 1949, 1951; Appointed to the faculty in 1951; Pi Gamma Mu.

# engineering



**ALVIN RICHARD REINHART**  
Assistant Professor of Engineering; B.S. New Hampshire, 1930; Appointed to the faculty in 1958.



**THEODORE ROBERT  
BLAKESLEE, II**

Associate Professor of Engineering; B.S. in Naval Architecture and Marine Engineering, Massachusetts Institute of Technology, 1945; M.S. in Mechanical Engineering, Lehigh, 1952; Faculty Member, Lafayette College, 1947-1956; Appointed to the faculty in 1958.



**AUGUST EDWARD SAPEGA**

Associate Professor of Engineering; B.S., M.S. Columbia, 1946, 1951; Appointed to the faculty in 1951.



**WENDELL EVERETT KRAFT**

Associate Professor of Engineering and Assistant to the President; B.S. United States Naval Academy, 1924; M.S. Massachusetts Institute of Technology, 1929; Retired in 1954 as a Captain in the United States Navy; Appointed to the faculty in 1954.



**WILLIAM RUTHVEN  
SMITH, III**

Instructor in Engineering; B.S. Trinity, 1956; B.E.E., M.S.E. George Washington, 1958, 1959; Appointed to the faculty in 1961; Sigma Tau.

**EDWIN PACKARD NYE**

Halden Professor of Engineering; B.S. New Hampshire, 1941; Sc.M. Harvard, 1947; Formerly a faculty member at Pennsylvania State University; Appointed to the faculty in 1959; Phi Kappa Phi, Pi Tau Sigma.





# English

## FREDERICK LANDIS GWYNN

James J. Goodwin Professor of English; A.B. Bowdoin, 1937; A.M., Ph.D. Harvard, 1938, 1942; Associate Professor, University of Virginia, 1955-1958; Author of *Sturge Moore and the Life of Art*; Co-Author of *The Fiction of J. D. Salinger*; Co-editor of *The Case of Poetry: A New Anthology and Faulkner in the University: Class Conferences at the University of Virginia*; Editor of *College English Magazine*, 1955-1960; Appointed to the faculty in 1958; Phi Beta Kappa.



## JOHN BARD McNULTY

Professor of English; B.S. Trinity, 1938; M.A. Columbia, 1939; Ph.D. Yale, 1944; Appointed to the faculty in 1944.



## RALPH MEHLIN WILLIAMS

Associate Professor of English; B.A. Amherst, 1933; Ph.D. Yale, 1938; Instructor in Composition, Wellesley College, 1942-1946; Co-author of *Private Charity in England, 1747-1757*; Co-editor of *The Correspondence of Horace Walpole and Henry Zouch*; Author of *Poet, Painter and Parson: The Life of John Dyer and Phonetic Spelling for College Students*; Appointed to the faculty in 1946.

## KENNETH WALTER CAMERON

Associate Professor of English; B.A., M.A. West Virginia, 1930, 1931; S.T.B. General Theological Seminary, 1935, Ph.D. Yale, 1940; Fellow of the American Antiquarian Society; Appointed to the faculty in 1946; Phi Beta Kappa.



## JOHN ARTHUR DANDO

Associate Professor of English; B.A., M.A. McGill, 1938, 1945; Appointed to the faculty in 1950.



## ROBERT DANA FOULKE

Assistant Professor of English; A.B. Princeton, 1952; M.A., Ph.D. Minnesota, 1957, 1961; Formerly a member of the English Department, University of Minnesota; Appointed to the faculty in 1961; Phi Beta Kappa.



## DANIEL BOND RISDON

Associate Professor of English; B.A. Amherst, 1930; M.A. Trinity, 1938; M.A. Yale, 1947; Appointed to the faculty in 1936.

## GEORGE EMORY NICHOLS, III

Associate Professor of Drama; B.A., M.F.A. Yale, 1938, 1941; Appointed to the faculty in 1950.



## RICHARD PAUL BENTON

Assistant Professor of English; B.S., M.A., Ph.D. Johns Hopkins, 1952, 1953, 1955; Appointed to the faculty in 1955.



## JAMES LAIN POTTER

Assistant Professor of English; B.A., M.A. Wesleyan, 1944, 1946; Ph.D. Harvard, 1954; Appointed to the faculty in 1955.



# FINE ARTS



**PAUL JAMES SMITH, JR.**

Instructor in English; B.A., M.A. Rochester, 1950, 1951; Teaching Fellow in General Education and Tutor in History and Literature, Harvard, 1956-1959; Dexter Fellowship for Travel in England, Harvard, 1959; Appointed to the faculty in 1959.



**MARTIN BORIS FRIEDMAN**

Instructor in English; B.A. Dartmouth, 1955; Lecturer in English, Columbia University, 1959-1960; Instructor in French, Fairleigh Dickinson University, 1960; Appointed to the faculty in 1961; Phi Beta Kappa.

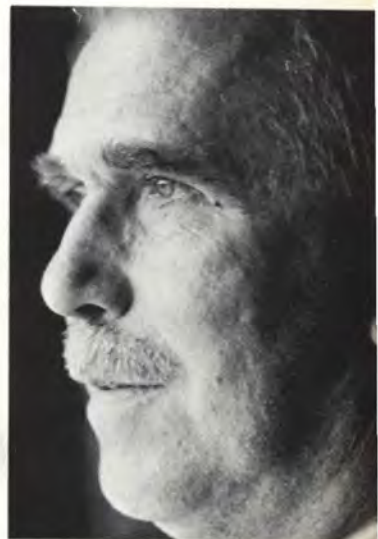


**STEPHEN MINOT**

Lecturer in English; B.A. Harvard, 1953; M.A. Johns Hopkins, 1955; Appointed to the faculty in 1959.

**JOHN CORWIN EMERSON TAYLOR**

Professor of Fine Arts; B.A., M.A. Yale, 1926, 1940; Attended the Académie Julian, an art school in Paris, 1926-1928; Member, ex officio, of Hartford's Fine Arts Commission; Formerly a teacher of Art and French at the Lawrenceville School; Appointed to the faculty in 1941.



**CHARLES BENNER FERGUSON**

Instructor in Fine Arts; B.A. Williams, 1941; M.A. Trinity, 1959; Studied at The Art Student's League, New York City; Appointed to the faculty in 1959.



**MITCHEL NICHOLAS PAPPAS**

Associate Professor of Fine Arts; B.F.A., M.F.A. Yale, 1941, 1947; President, New England Intercollegiate Golf Association, 1960; Appointed to the faculty in 1947.

# Geology

**RANDOLPH WALLACE CHAPMAN**

Professor of Geology; B.S. New Hampshire, 1929; A.M., Ph.D. Harvard 1932, 1934; Visiting Professor of Geology, University of Saint Andrews, Scotland and the University of Wales, 1949-1950; Geologist with the United States Geological Survey, 1952-1954; Visiting Professor of Geology, University of Libya, 1960-1961; Appointed to the faculty in 1954; Sigma Xi, Phi Kappa Phi, Sigma Pi Sigma.



**VERNON LEROY FERWERDA**

Associate Professor of Government; B.A., M.S. Massachusetts, 1940, 1941; Ph.D. Harvard, 1954; Assistant Professor of Government, University of Massachusetts, 1946-1951; Leader, Crossroads Africa, 1961; Appointed to the faculty in 1954; Pi Gamma Mu, Phi Kappa Phi.



**THOMAS CARTWRIGHT MENTZER**

Instructor in Geology; A.B. Williams, 1956; M.S. Lehigh, 1958; Graduate Assistant, Lehigh, 1957-1961; Appointed to the faculty in 1961; Sigma Xi.



# GOVERNMENT

**REX CHARLTON NEAVERSON**

Assistant Professor of Government; B.A., M.A., Ph.D. Harvard, 1952, 1954, 1959; Appointed to the faculty in 1955; Pi Gamma Mu.



**ALBERT LODEWIJK GASTMANN**

Instructor in Government; B.A., M.A. Columbia, 1949, 1953; Appointed to the faculty in 1954; Pi Gamma Mu.



**PAUL WALTER MEYER**

Lecturer in Government; B.A. Denver, 1923; Appointed to the faculty in 1960.

# History



**GEORGE BRINTON COOPER**

Professor of History; B.A. Swarthmore, 1938; M.A., Ph.D. Yale, 1942, 1948; Vice Consul and Political Analyst, United States Embassy, London, 1944-1946; Managing Editor, *Journal of British Studies*; Appointed to the faculty in 1941; Phi Beta Kappa, Pi Gamma Mu.



**EUGENE WOOD DAVIS**

Professor of History; B.A. Texas, 1940; M.A. Harvard, 1941; Ph.D. North Carolina, 1948; Appointed to the faculty in 1948; Pi Gamma Mu.



**DANIEL GARRISON BRINTON THOMPSON**

Northam Professor of History and Political Science; B.A. Pennsylvania, 1920; B.S. Massachusetts Institute of Technology, 1923; Ph.D. Columbia, 1945; Faculty member, Lafayette College, 1943-1945; Author of *Ruggles of New York* and *Gateway to a Nation*; Appointed to the faculty in 1945; Phi Beta Kappa, Pi Gamma Mu.



**ROBERT CLIFFORD BLACK, III**

Associate Professor of History; B.A. Williams, 1937; M.A. University of Denver, 1947; Ph.D. Columbia, 1951; Instructor, Rensselaer Polytechnic Institute, 1945-1948; Author of *Railroads Of The Confederacy*; Appointed to the faculty in 1950; Pi Gamma Mu.



**NORTON DOWNS**

Associate Professor of History; B.A., M.A., Ph.D. Pennsylvania, 1940, 1947, 1950; Lecturer, Swarthmore, 1948; Editor of *Basic Documents in Medieval History*; Appointed to the faculty in 1950; Pi Gamma Mu.

**PHILIP CHARLES FARWELL BANKWITZ**

Associate Professor of History; A.B., A.M., Ph.D. Harvard, 1947, 1948, 1952; Toppan Prize for doctoral dissertation, *Wegand: A Biographical Study*, awarded by Harvard University, 1952; Grants for research and writing in modern French history; American Philosophical Society (1958-1959), Danforth Foundation (1961); Appointed to the faculty in 1954; Pi Gamma Mu.



**GLENN WEAVER**

Assistant Professor of History; A.B. Catawba, 1941; B.D. Lancaster Seminary, 1944; M.A. Lehigh, 1947; A.M., Ph.D. Yale, 1951, 1953; Appointed to the faculty in 1957; Pi Gamma Mu.

**PHILIP KINTNER**

Assistant Professor of History; B.A. Wooster, 1950; M.A., Ph.D. Yale, 1952, 1958; Instructor, Reed College, Oregon, 1957-1958; Danforth Faculty Summer Research Grant, 1959; Appointed to the faculty in 1954; Pi Gamma Mu, Phi Alpha Theta.



**ALAN CASSELS**

Instructor in History; B.A., M.A. Oxford, 1952, 1956; Ph.D. Michigan, 1961; Formerly a faculty member at Sweet Briar College in Virginia and the University of Michigan; Appointed to the faculty in 1959; Phi Beta Kappa, Pi Gamma Mu.





**HAROLD LAIRD DORWART**

Seabury Professor of Mathematics and Natural Philosophy; B.A. Washington and Jefferson, 1924; Ph.D. Yale, 1931; Has taught at Yale, Williams, and Washington and Jefferson; Appointed to the faculty in 1949; Phi Beta Kappa, Sigma Xi.



**WALTER JOHN KLIMCZAK**

Professor of Mathematics; B.S., M.A., Ph.D. Yale, 1937, 1939, 1948; Appointed to the faculty in 1951.

# Mathematics



**ROBERT CLARENCE STEWART**

Associate Professor of Mathematics; B.A., M.A. Washington and Jefferson, 1942, 1944; M.A. Yale, 1948; Assistant in Instruction, Department of Mathematics, Yale, 1946-1950; Appointed to the faculty in 1950; Phi Beta Kappa.



**EMMET FINLAY WHITTLESEY**

Associate Professor of Mathematics; A.B., M.A., Ph.D. Princeton, 1948, 1955, 1957; Appointed to the faculty in 1954.



**MARIO JOSEPH POLIFERNO**

Assistant Professor of Mathematics; B.A., M.A., Ph.D. Yale, 1952, 1954, 1958; Appointed to the faculty in 1958.



**DAVID SOLOMON SALSBURG**

Instructor in Mathematics; B.A. Pennsylvania, 1952; Appointed to the faculty in 1961.



**MARJORIE VAN EENAM BUTCHER**

Lecturer in Mathematics; B.A., M.A. University of Michigan, 1947, 1949; Instructor, University of Michigan, 1952-1956; Appointed to the faculty in 1956; Phi Beta Kappa, Phi Kappa Phi.



**LOUISE JOHNSON ROSENBAUM**

Lecturer in Mathematics; B.A., M.A., Ph.D. Colorado, 1928, 1933, 1939; Appointed to the faculty in 1961; Phi Beta Kappa.



**STEPHEN PETER HOFFMAN, JR.**

Associate Professor of Mathematics; B.A., M.A., Ph.D. Yale, 1949, 1951, 1957; Appointed to the faculty in 1957.



**GUSTAVE WILLIAM ANDRIAN**  
 Professor of Romance Languages; B.A. Trinity, 1940; Ph.D. Johns Hopkins, 1946; Appointed to the faculty in 1946; Phi Beta Kappa.



**LOUIS HASTINGS NAYLOR**

Professor of Modern Languages; B.A., M.A., Ph.D. Johns Hopkins, 1917, 1922, 1923; Fellow of the Belgian-American Foundation, Liège, Belgium, 1920-1921; Fellow by Courtesy, Johns Hopkins, 1929-1930; Author of *Chateaubriand and Virgil*; Appointed to the faculty in 1923; Phi Beta Kappa.



**ROBERT PALMER WATERMAN**

Associate Professor of Romance Languages; B.A., M.A. Trinity, 1932, 1934; Ph.D. Yale, 1948; Taught at Amherst, 1938-1944; Editor (in collaboration) of *Bibliography of Critical and Biographical References for the Study of French Literature*; Appointed to the faculty in 1936.



**WALTER DAVID LEAVITT**

Associate Professor of Romance Languages; B.A. Bates, 1947; M.A., Ph.D. Yale, 1949, 1954; Appointed to the faculty in 1949.



**ARNOLD LEWIS KERSON**  
 Instructor in Spanish; B.A. Yale, 1953; Appointed to the faculty in 1960.



**LAWRENCE ROBERT STIRES, JR.**

Instructor in Modern Languages; A.B. Rutgers, 1952; M.A. Duke, 1957; Appointed to the faculty in 1960.

## MODERN LANGUAGES



**MICHAEL RICHARD CAMPO**

Associate Professor of Romance Languages and Director of The Cesare Barbieri Center for Italian Studies; B.A. Trinity, 1948; M.A., Ph.D. Johns Hopkins, 1953, 1954; Appointed to the faculty in 1952; Pi Gamma Mu.



**CARL VICTOR HANSEN**

Assistant Professor of German; B.A., M.A., Ph.D. Yale, 1941, 1948, 1952; Assistant Professor of German, University of Rhode Island, 1953-1956; Fulbright Teacher Exchange Grant to Innsbruck, Austria, 1959-1960; Appointed to the faculty in 1956; Phi Beta Kappa, Delta Phi Alpha.



**NORMAN RICHARDSON LONG**

Instructor in Romance Languages; B.A. Wesleyan, 1948; M.A. Northwestern, 1955; Formerly taught French at the University of Michigan while working on Ph.D.; Appointed to the faculty in 1960.



**DONALD DWIGHT HOOK**

Assistant Professor of Modern Languages; B.A. Emory, 1950; M.A. Duke, 1957; Ph.D. Brown, 1961; Appointed to the faculty in 1961.

DECEASED  
 November 3, 1961



**HANS FRIEDRICH FRESE**  
Lecturer in German; B.S., M.A. New York University, 1933, 1935; Ph.D. Marburg, 1937; Appointed to the faculty in 1951.

## Music

### CLARENCE EVERETT WATTERS

Professor of Music and Organist; Mus.M. Trinity, 1935; Studied music in Paris with Marcel Dupre; Fellow, American Guild of Organists; Appointed to the faculty in 1932.



### CLARENCE HOWARD BARBER

Associate Professor of Music; B.A., M.A., Ph.D. Harvard, 1940, 1942, 1954; Appointed to the faculty in 1954; Phi Beta Kappa.



### BLANCHARD WILLIAM MEANS

Brownell Professor of Philosophy; B.A., Ph.D. Yale, 1927, 1932; Appointed to the faculty in 1932; Phi Beta Kappa, Pi Gamma Mu.

## PHILOSOPHY



### MYRON GEORGE ANDERSON

Assistant Professor of Philosophy; B.A., M.A. Minnesota, 1951, 1954; Ph.D. Brown, 1959; Appointed to the faculty in 1956; Phi Beta Kappa.

### HOWARD DE LONG

Instructor in Philosophy; B.A. Williams, 1957; Ph.D. Princeton, 1960; Appointed to the faculty in 1960; Phi Beta Kappa.



### FREDERICK MAYNARD STOUTLAND

Assistant Professor of Philosophy; B.A. St. Olaf's, 1954; Ph.D. Yale, 1959; Appointed to the faculty in 1958; Phi Beta Kappa.



# Physical Education



**RAYMOND OOSTING**

Professor of Physical Education and Director of Athletics; B.P.E., M.Ed. Springfield, 1924, 1931; President, National Association of College Basketball Coaches, 1956-1957; Member, National Basketball Rules Committee; Selected as Athletic Consultant for United States Army, Navy and Air Force clinics in the Philippines and Japan in 1945, and in Hawaii and Japan in 1953, 1956 and 1957; Appointed to the faculty in 1924.



**DANIEL EDWARD JESSEE**

Professor of Physical Education; B.A. Pacific, 1926; M.A. Columbia, 1931; Author of *Baseball*; Appointed to the faculty in 1932; Phi Delta Kappa.



**KARL KURTH, JR.**

Professor of Physical Education; B.S., M.Ed. Springfield, 1942, 1947; Participated in United States Department of State International Educational Exchange Program in Africa in 1959; Appointed to the faculty in 1952.



**ROY ALFRED DATH**

Assistant Professor of Physical Education; B.S. West Chester State Teachers, 1951; M.A. Trinity, 1956; Member, Pan American and United States Olympic Soccer Committee; Appointed to the faculty in 1952.



**CHARLES JAY McWILLIAMS**

Assistant Professor of Physical Education; B.S. Pennsylvania State, 1937; M.P.E. Springfield, 1947; Formerly a faculty member at Alfred University; Appointed to the faculty in 1957; Alpha Tau Delta.



**ROBERT DENNIS SLAUGHTER**

Assistant Professor of Physical Education; B.S., M.S.Ed. Springfield, 1948, 1952; President, New England College Swimming Coaches Association, 1957; Registered Physical Therapist in Connecticut; Appointed to the faculty in 1951.



**CHESTER HERMAN McPHEE**

Assistant Professor of Physical Education; B.A. Oberlin, 1951; M.A. Ohio State, 1957; Vice President, New England Lacrosse Coaches Association; Appointed to the faculty in 1957.



**ROBERT ELLIS SHULTS**

Assistant Professor of Physical Education; B.A. Oberlin, 1951; M.E. Bowling Green, 1957; Instructor of Physical Education, Oberlin, 1955-1956; Appointed to the faculty in 1957.

# PHYSICS



**FRANK WOODBRIDGE CONSTANT**

Jarvis Professor of Physics; B.S. Princeton, 1925; Ph.D. Yale, 1928; Taught at Duke University from 1930 to 1933 and from 1934 to 1946; Fellow, American Physical Society; Appointed to the faculty in 1946; Phi Beta Kappa, Sigma Xi, Sigma Pi Sigma.



**ROBERT FREEMAN KINGSBURY**

Associate Professor of Physics; B.S. Bowdoin, 1934; M.S. Cornell, 1939; Ph.D. Pennsylvania, 1956; Appointed to the faculty in 1950.



**ROBERT LINDSAY**

Associate Professor of Physics; Sc.B. Brown, 1947; M.A., Ph.D. Rice, 1949, 1951; Appointed to the faculty in 1956.



**CHARLES ROBERT MILLER**

Assistant Professor of Physics; B.S. California Institute of Technology, 1952; Appointed to the faculty in 1961.



**JOHN FREDERICK WILD**

Assistant Professor of Physics; B.S., M.S., Ph.D., Yale, 1950, 1951, 1958; Appointed to the faculty in 1957.

# psychology



**MAURICE CURTIS LANGHORNE**

Professor of Psychology; A.B., M.A. Washington and Lee 1925, 1926; Ph.D. Ohio State, 1932; Faculty member, Emory University, Atlanta, Georgia, 1926-1959; Appointed to the faculty in 1959; Phi Beta Kappa, Sigma Xi, Psi Chi.

**ROBERT DALE MEADE**

Associate Professor of Psychology; A.B. Indiana University, 1950; A.M., Ph.D. Pennsylvania, 1952, 1956; Consulting Editor, *Canadian Journal of Psychology*; Appointed to the faculty in 1955; Pi Gamma Mu, Sigma Xi, Psi Chi.

**AUSTIN CLAUD HERSCHBERGER**

Assistant Professor of Psychology; B.S. Columbia, 1948; M.S., Ph.D. Illinois, 1950, 1955; Assistant Professor, Kenyon College, 1955-1960; Appointed to the faculty in 1960; Sigma Xi.





# Religion



**EDMOND LABEAUME CHERBONNIER**

Professor of Religion; B.A. Harvard, 1939; B.D. Union Theological, 1947; B.A., M.A. Cambridge, 1948, 1952; Ph.D. Columbia, 1951; D.D. Vermont, 1959; Assistant Professor, Associate Professor of Religion, Barnard College and Lecturer, Union Theological Seminary, 1951-1955; Author of *Hardness of Heart* and *The Broken Covenant*; Appointed to the faculty in 1955.



**WILLIAM ALEXANDER JOHNSON**

Assistant Professor of Religion; B.A. Queens, 1953; B.D. Drew, 1956; Teol. Kand., Teol. Lic., Teol. Dr. Lund University (Sweden), 1957, 1958, 1962; M.A. Columbia, 1958; Ph.D. Columbia-Union, 1959; Author of *The Philosophy of Religion of Anders Nygren*; Appointed to the faculty in 1959.



**THEODOR MARCUS MAUCH**

Associate Professor of Religion; A.B. Elmhurst, 1943; B.D., S.T.M., Th.D. Union Theological, 1946, 1947, 1958; Taught at Wellesley College, 1950-1956; Appointed to the faculty in 1957.



**CHARLES FREEMAN SLEEPER**

Instructor in Religion; B.A. Colby, 1954; B.D. Yale Divinity, 1958; Studied at Vanderbilt University Graduate School, 1958-1961; Appointed to the faculty in 1961; Phi Beta Kappa, Pi Gamma Mu.

# administration



**ALBERT EDWARD HOLLAND**

Vice President; B.A., M.A. Trinity, 1946, 1958; Winner of the Eigenbroot Trophy in 1958; Appointed to the administration in 1946; Pi Gamma Mu.



**JAMES KENNETH ROBERTSON**

Treasurer and Comptroller; Ph.B. Yale, 1930; M.B.A. Harvard, 1932; Formerly Business Manager of the Taft School, Watertown, Connecticut; Appointed to the administration in 1951.



**THOMAS ALOYSIUS SMITH**  
 Registrar, Veterans Counselor and Assistant to the Dean of the College; B. A. Trinity, 1950; M.A. Columbia, 1952; Formerly English Instructor, Dean Junior College; Appointed to the administration in 1953.



**NORMAN ATWOOD WALKER**  
 Director of Buildings and Grounds; B.S. Yale, 1929; Appointed to the administration in 1947.



**JOHN ANDREW MASON**  
 Alumni Secretary; B.A. Trinity, 1934; Appointed to the administration in 1946.



**JOHN FRANCIS BUTLER**  
 Director of Placement and Admissions Counselor; B.S. Trinity, 1935; Appointed to the administration in 1947; Pi Gamma Mu.



**KENNETH COOLIDGE PARKER**  
 Director of Public Relations; A.B. Middlebury, 1931; M.A. Columbia, 1936; Formerly a member of the faculty and administration of the Taft School, Watertown, Connecticut; Appointed to the administration in 1955; Pi Delta Epsilon.



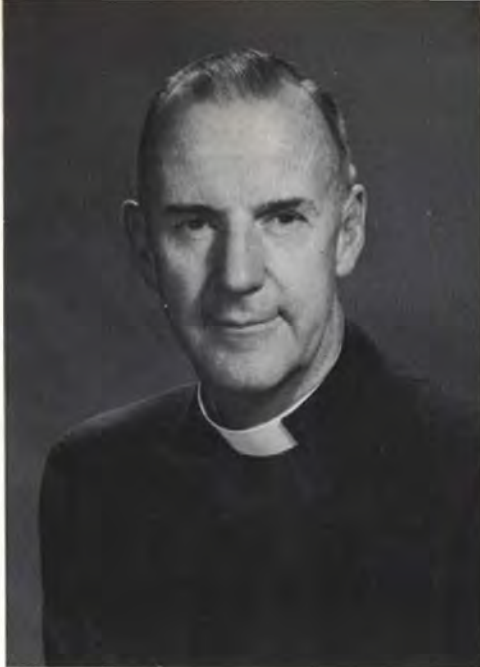
**FRANCIS GARDINER F. BRIDGE**  
 Director of Admissions; A.B. Dartmouth, 1942; Formerly Assistant to the Director of Admissions at Dartmouth College; Appointed to the administration in 1956.

**FRANCIS LUDWIG LUNDBORG**  
 Medical Director; B.S. Trinity, 1924; M.D. Yale, 1930; Appointed to the administration in 1935.



**JAMES MOULTON THOMAS**

Chaplain; A.B. Princeton, 1925; B.D. Virginia Theological Seminary, 1929; Formerly served in Parishes in Maryland, Pennsylvania and West Virginia; Appointed to the administration in 1956.



**LEONARD RAYMOND TOMAT**

Director of Mather Hall; B.A. Vermont, 1950; M.A. New York University, 1956; Formerly with the Riverdale Country School, New York City. Appointed to the administration in 1960; Kappa Phi Kappa.



# LIBRARY



**MARIAN G. M. CLARKE**

Chief of Readers' Services and Curator of the Watkinson Library; A.B., A.B.L.S. Michigan, 1932, 1933; Appointed to the library staff in 1955.



**EUGEN BIGELOW  
EISENLOHR**

Reference Librarian; B.A. Bard College — Columbia University, 1934; B.L.S. Pratt Institute, 1949; Formerly principal reference librarian, Newark Public Library, Newark, New Jersey; Appointed to the library staff in 1959.

**DONALD BROWN ENGLE**

Librarian and Librarian of the Watkinson Library; B.A. Amherst, 1939; B.L.S. Columbia, 1941; M.A. Chicago, 1947; M.A. Amherst, 1959; Librarian, Norwich University, 1947-1949; Appointed to the library staff in 1949; Pi Gamma Mu.



**MARGARET ALICE  
WRIGHT**

Associate Catalogue Librarian; B.A. Connecticut, 1948; M.S.L.S. Columbia, 1954; Formerly Reference Librarian, General Theological Seminary, New York; Appointed to the library staff in 1957.



**ADOLF JOSEPH  
SEIBEL**

Serials Librarian; M.A. University of Lvov (Poland), 1939; Formerly with the Tolstoy Foundation, Munich, Germany; Appointed to the library staff in 1959.

**ELIZABETH N. IVES**

Catalogue Librarian; B.S. Elmira College, 1926; B.L.S. Columbia, 1927; Formerly Assistant Librarian, Elmira College; Appointed to the library staff in 1950.

**LAURA BLINN SCHATZ**

Order Librarian; Appointed to the library staff in 1922.





IVY MASS . . .

*As the morning blinks its eyes and takes its first deep breath, the lamp light retires to sleep by day,*





*while new light unsettles the mist. Young light*

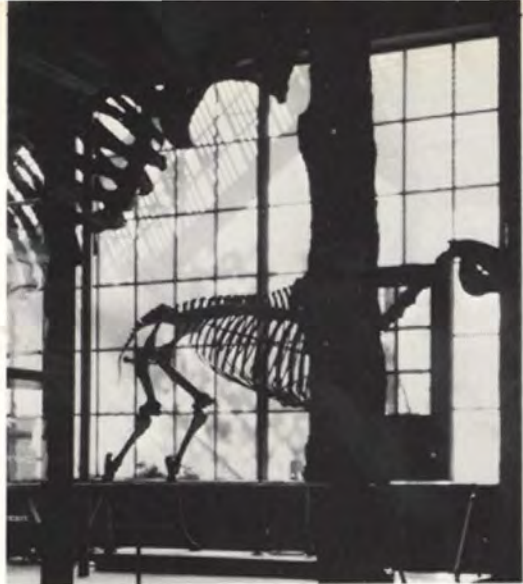
*up and down the fire escapes*

*muses  
over  
sleeping  
buildings,*



*and then      c r e e p s*





*before entering a window to inspect a room.  
Next it slips unnoticed through an arch  
that waits patiently to be filled, by things*



*greater than the body which searches night  
and day*





*both kneeling pad high  
and pulpit low.*

*Running along rusticated walls, it makes silhouettes*

*of leaves  
that echo  
larger forms  
that are  
cowled*

*by black robes.*







*Leaping to the roof top, gay sun looses itself  
 among the gables,  
 before cascading down the yawning ivy mass,  
 to give an old lamp  
 new light and to warm a conservative face*



*too weathered to smile.*



*Having enlightened the pronouncements of the day, growing morning light skirts  
the stairs, to find books that stand in double quietness.*





*But on its flirtive way again, it touches*

*upon an arch in triumph before  
resting and gazing out upon itself.*

*Yet ever restless, it ventures out to tell its own time and to*



color a man made rose. Pleased with its work, it climbs a peak, up each crocket until the finial is reached.



*But then across the enlightened campus,*

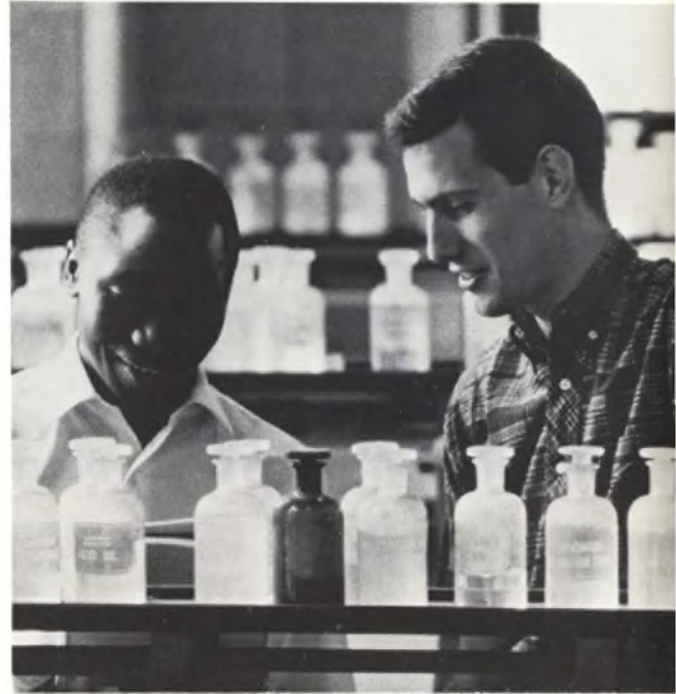


*the first bufferined steps are heard and the  
first meeting of the day ensues.*



*Next, breakfast is worked over as a biological necessity, inescapable as the elder faces in and out of class where knowledge is imparted and often understood*





*as well as the scented letters from  
other homes of higher learning.  
Yet never as well as cashing checks  
or buying ties. Then again, some will learn*



*what chemicals*



*do to man or what man could do for man besides*





*memorizing facts and theories for limited future use. But the day being under way with congregations above and below ground and then again sometimes without grounds,*





*there are promises of the awaited weekend,  
promises of new thoughts to be  
formed, but not until a few  
racks are rung before the  
noon communion of minds.*





*and behind*  
*before*  
*take heed of minds*  
*sophomoric*  
*heads not yet*  
*from the darkness of the cave,*  
*Dispersing*





*the scenes then muse over loftier amusements  
or puzzles of point of view, though inherent, that often go  
unnoticed while some merely labor under the mellowing rays.*



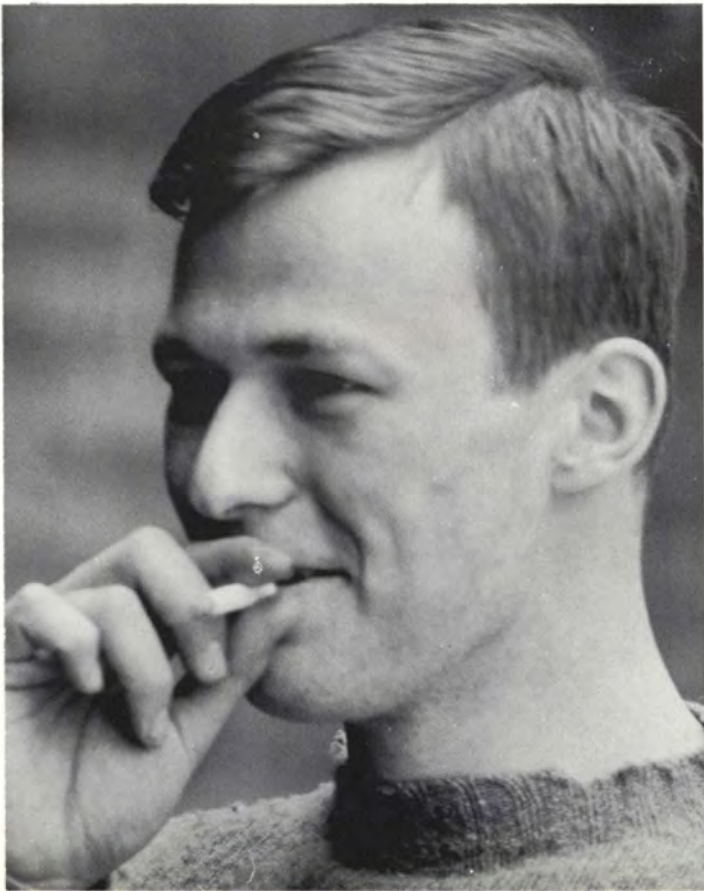
*There are those who support themselves, and a few*

*that support others with a touch of newness that only practice can perfect and once*





*in a while these things are put to press  
to be considered and evaluated at a liberal level.*





*But the game goes on for*

*viewer and viewed on the bards own stage with moments of  
confused tension,  
quiet confidence of things that will come in due time,*







*and open rebuttal against the way things are.*

*Yet a few stretch more than their vocal chords*

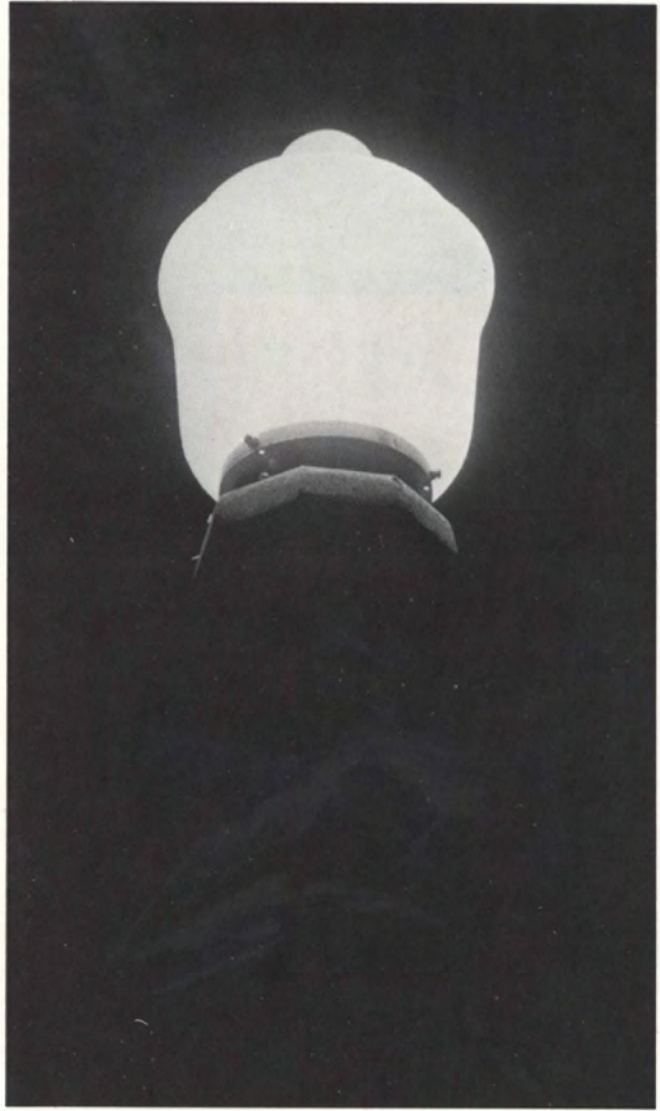




*before seductive entertainment releases the mind so that the body  
may enjoy another gleeful drink.  
And all that is left is a man made light left on  
by someone gone to sleep*



*that echoes the hope for another day.*





*Seniors*

**DAVID SAMUEL ALBERTS**

Major: Pre-Medical. *Tripod*; Chemistry Club; Political Science Club; Campus Chest, Treasurer; Swimming. Prepared at Shorewood High School.



**GUY KENNETH ANDERSON**

Major: Pre-Medical. WRTC; Newman Club; Political Science Club, Publicity Director; Young Republicans, Correspondence Secretary; Cheerleaders, Co-Captain; Swimming; Lacrosse; Alpha Chi Rho. Prepared at Mercersburg Academy.



**DOUGLAS KAY ANDERSON**

Major: Economics. Senate; Medusa; Sophomore Dining Club, Secretary-Treasurer; Vestry; Campus Chest; Interfraternity Council, Secretary-Treasurer; Intramural Board; Junior Advisor; Soccer, Co-Captain; Baseball; Alpha Delta Phi. Prepared at Deerfield Academy.



**DEMOS ANTONIOU**

Major: Engineering. Engineering Club. Prepared at Mount Herman.

**PAUL BERNARD ASCHER**

Major: Government. Hillel Club; Political Science Club; Sports Car Club; International Relations Club; Brownell Club; Pi Gamma Mu. Prepared at Conard High School.

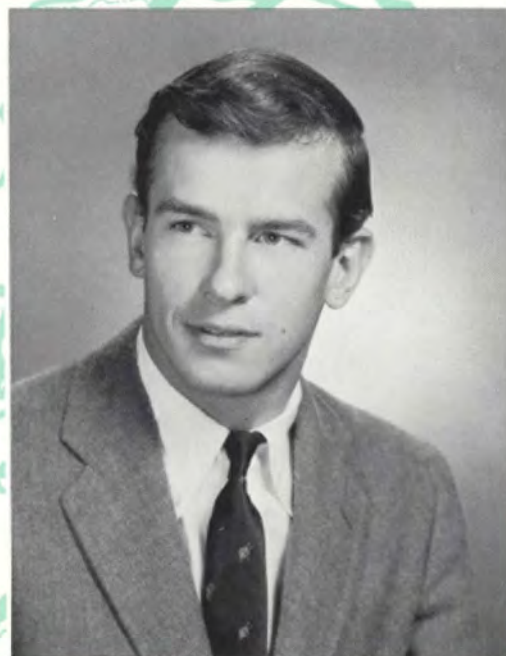


**JOHN HERBERT BAKER, JR.**

Major: Biology and Pre-Medical. Senate; Committee Organized To Defend Equality, Chairman; Sports Car Club, Secretary; Soccer; Track; Mather Hall Board of Governors, Chairman; Alpha Chi Rho. Prepared at Irondequoit High School.

**DAVID LOUIS ARP**

Major: Mathematics. Pi Kappa Alpha. Prepared at Shattuck.



**SAMUEL BAILEY**

Major: Government. Sophomore Dining Club; Track; Alpha Delta Phi. Prepared at St. Paul's School.



**BOHDAN BALKO**

Major: Mathematics and Physics. Newman Club; Physics Club; Brownell Club; Sigma Pi Sigma, President. Prepared at Glastonbury High School.

**HENRY JOSEPH BASHWINER, JR.**

Major: English. Glee Club; Jesters; Italian Club; Corinthian Yacht Club; Swimming; Tennis; Delta Kappa Epsilon. Prepared at Middlesex School.



**PETER WAKEFIELD BARTOL**

Major: History. Pi Gamma Mu; Tripod; Pipes and Drums; Rowing Association; Campus Chest; Swimming; Companion Program. Prepared at St. Paul's School.

**HANS PHILLIP BAUER**

Major: Psychology. Folksingers; Jesters; Track; Theta Xi. Prepared at Troy High School.



**IAN YORTY BENNETT**

Major: History. Medusa; Sophomore Dining Club; Jesters; Campus Chest; Interfraternity Council, President; Junior Advisor; Class Officer, Vice-President; Football; Swimming; Squash; Tennis; Track; St. Anthony Hall. Prepared at Choate.



**CHARLES HUDSON BISHOP, JR.**

Major: Economics. Sophomore Dining Club; Economics Club; Football; Lacrosse; Alpha Delta Phi. Prepared at University School.

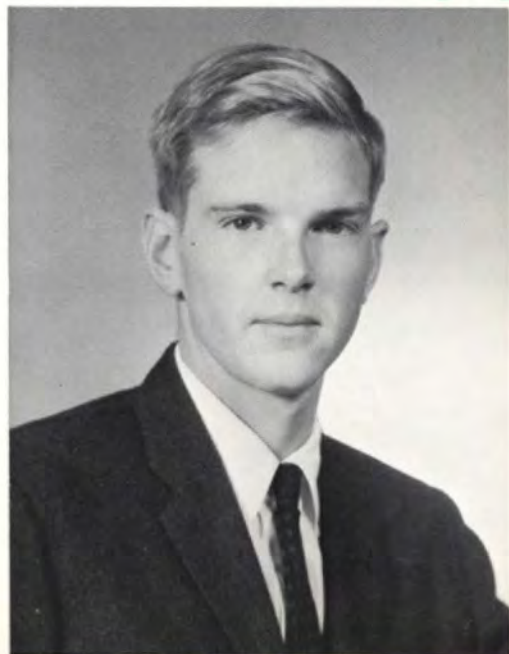


**RICHARD BRADLEY BERKLEY**

Major: Pre-Medical. Tripod; Jesters; Freshman Executive Council; Track; Cross Country; Q.E.D. Prepared at Garden Country Day School.

**EDWARD SCHENCK  
BLACKWELL, III**

Major: Psychology. Glee Club; Psychology Club; Junior Advisor; Psi Chi, Secretary-Treasurer. Prepared at Pringry.





**ROBERT ALEXANDER BORAWSKI**

Major: Economics. Sigma Nu. Prepared at Williston Academy.



**ROBERT BONNER BOWLER, III**

Major: History. Glee Club; Young Republicans; Corinthian Yacht Club; Senior Lay Leader; Hockey Club; Bishop's Men; Psi Upsilon. Prepared at St. Paul's School.



**HAROLD RICHARDSON BORUS**

Major: Religion. Sophomore Dining Club; Christian Association; Track; Alpha Delta Phi, Treasurer. Prepared at Shady Side Academy.

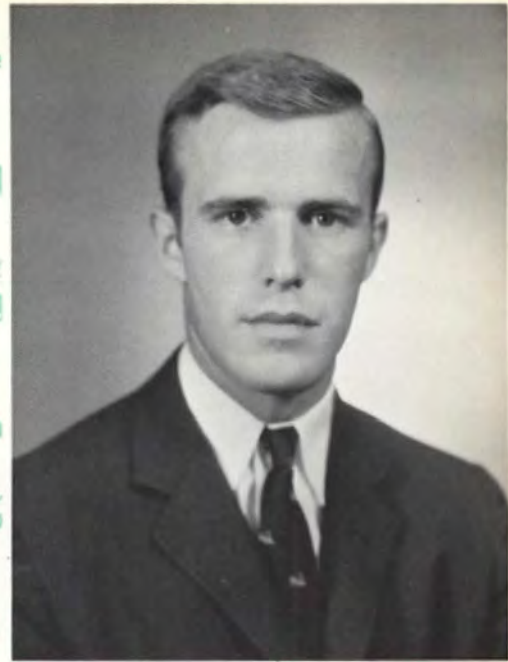


**THOMAS MORGAN BOYD**

Major: Religion. Tripod; WRTC; Rowing Association, Captain; Football; Swimming; Delta Kappa Epsilon. Prepared at Kent School.

DEYAN RANKO BRASHICH

Major: History and French. Pipes and Drums; Le Cercle Français; Art League, President; Young Republicans; Education Club. Prepared at Trinity School.



JAMES DORSEY BROWN, III

Major: History. Sophomore Dining Club; Newman Club; Campus Chest; Squash; Lacrosse, Captain; St. Anthony Hall. Prepared at St. Paul's School.

ROBERT MARX BRANDENBERGER

Major: Geology. Basketball; Brownell Club. Prepared at Newington High School.



ERIC HENNING BROUDY

Major: English. Tripod; Marching Band; Jesters; Le Cercle Français; Political Science Club; Junior year at the University of Edinburgh. Prepared at Norwalk High School.



**GEORGE BROWNE**

Major: History and Government. AFROTC; Rifle Team; Intramural Board; Brownell Club. Prepared at Conard High School.

**WILLIAM IRVING BUNNELL**

Major: History. Glee Club; Jesters; Young Republicans. Prepared at Mercersbury Academy.



**CARL EDWIN CARLSON, JR.**

Major: Interdepartmental Science. Glee Club; Bishop's Men; Cheerleaders; Alpha Chi Rho. Prepared at Loomis School.



**THOMAS FREEBORN BUNDY, JR.**

Major: Psychology and English. Ivy; Tripod; Vestry; Psychology Club, President; AFROTC; Rifle Team; Rowing Association; Campus Chest; Junior Advisor; Class Marshal; Football; Swimming, Captain; Track; Golf; St. Anthony Hall. Prepared at University School.



DONALD WARD CARROLL, JR.

Major: History. WRTC, Public Relations Director; Pipes and Drums; Christian Association; Theta Xi. Prepared at Gilman School.



CHARLES HENRY CLASSEN, JR.

Major: Biology. Sophomore Dining Club; Canterbury Club; Interfraternity Council, Vice-President; Track; Cross Country; Theta Xi. Prepared at Haverford School.



WILLIAM GUNDRY CHASE, JR.

Major: Economics. Tripod; Intramural Board; Fencing, Co-Captain; Q.E.D. Prepared at Hackley School.

DANA ALDEN CLEAVES

Major: English. Basketball; Tennis; Alpha Chi Rho. Prepared at South Portland High School.



**WILLIAM JAMES COAD, III**

Major: Philosophy and Mathematics. Philosophy Club; Soccer; Squash. Prepared at Lawrenceville.



**ALAN RICHARDS COYNE**

Major: Government. WRTC; Athenaeum Society, Vice-President; Young Republicans. Prepared at Riverdale Country School.



**STEVEN JAMES COOL**

Major: Psychology. Psi Chi; Vestry; Verger; Jesters, Business Manager; Le Cercle Français; Psychology Club; Campus Chest; Freshman Executive Council; Senior Loy Reader. Prepared at Enid High School.



**MICHAEL WHITTINGTON  
CREIGHTON**

Major: History. Marching Band; Vestry; Spanish Club; Young Democrats; Alpha Chi Rho. Prepared at Bethesda-Chevy Chase High School.

**FRANCIS JOSEPH CUMMINGS**

Major: Pre-Medical and Biology. Newman Club; Le Cercle Français; Chemistry Club; Psychology Club, Vice-President; Economics Club; Basketball, Assistant Manager. Prepared at James Hillhouse High School.

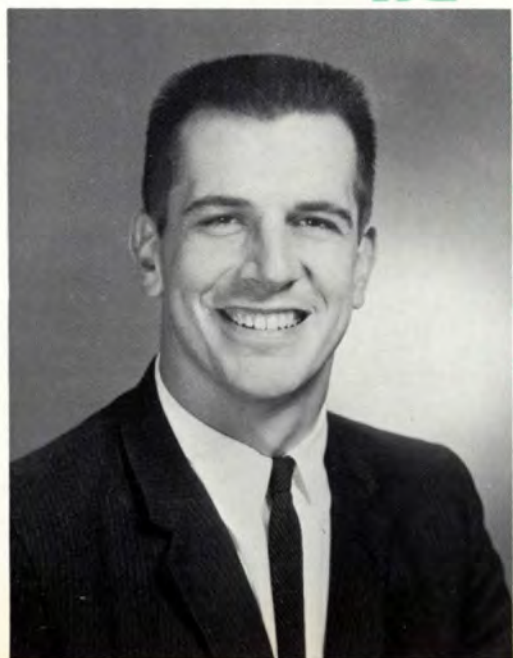


**ROBERT HOPKINS CUNNINGHAM**

Major: Interdepartmental Science. Newman Club; Brownell Club. Prepared at Bulkley High School.

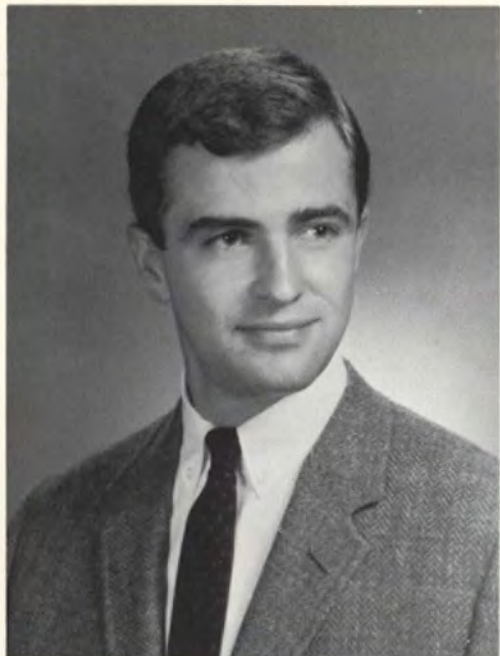
**KENNETH CHARLES CROMWELL**

Major: Religion. Senate; Sophomore Dining Club; Christian Association; Campus Chest; Freshman Executive Council; Class President; Football, Captain; Basketball; Baseball, Captain; *Who's Who in American Colleges and Universities*. Prepared at Solebury School.



**RICHARD CAMPBELL GUNNEEN**

Major: English. Sophomore Dining Club; Senate; AFROTC, Corp Commander; Football; Lacrosse; St. Anthony Hall. Prepared at Kimball Union School.

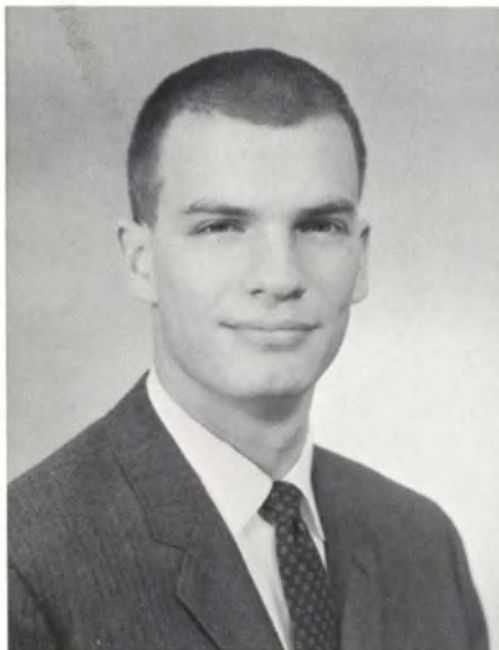


**SAMUEL GOULD CURTIS**

Major: English. Football; Theta Xi. Prepared at Berkshire School.

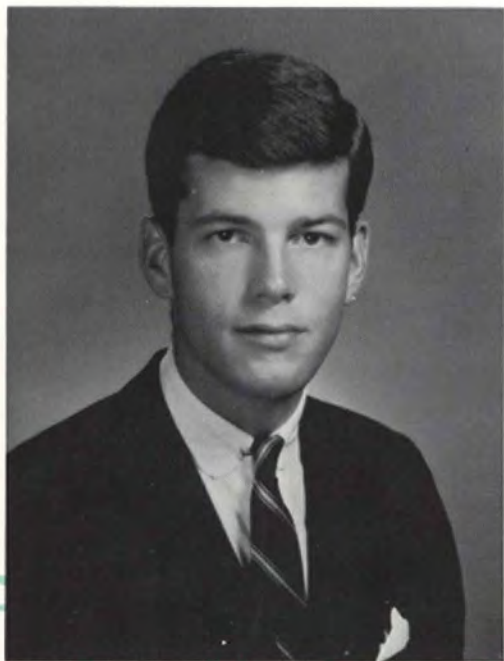
**DAVID GIBSON DANIELS**

Major: Pre-Medical and Interdepartmental Science. WRTC; Intramural Board; Delta Phi. Prepared at The Hill School.



**JAMES JOHN DARROW**

Major: Economics. Economics Club; Brownell Club. Prepared at New Britain High School.



**EARLE NEWTON CUTLER, III**

Major: Government. Young Republicans; Corinthian Yacht Club; Sports Car Club; Hockey Club; Tennis; St. Anthony Hall. Prepared at St. Paul's School.



**LEONARD VESPER DAY, JR.**

Major: Psychology. Psychology Club; Young Republicans; Corinthian Yacht Club; Sports Car Club; Interfraternity Council; Intramural Board; Senior Lay Reader; Lacrosse; Sigma Nu. Prepared at Episcopal Academy.



**JOHN ARTHUR DENSEM**

Major: Mathematics. Jesters; Economics Club, Secretary; Acolytes, Director; Q.E.D. Prepared at Grand Rapids Christian High School.



**RODNEY DEAN DAY, III**

Major: English. IVY; Sophomore Dining Club; Pipes; Economic Club; Junior Advisor; Class Officer, Secretary-Treasurer; Squash; Tennis; St. Anthony Hall. Prepared at The Hill School.

**JOHN MERLE DENSON**

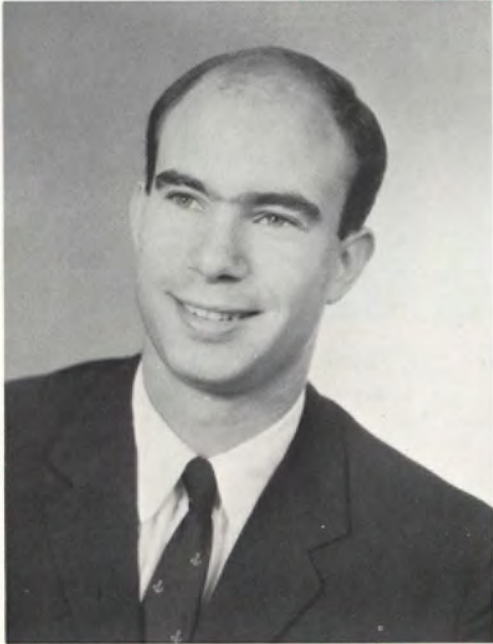
Major: Economics. IVY; Economics Club; Corinthian Yacht Club; Pi Kappa Alpha, President. Prepared at The Mercersburg Academy.





LAWRENCE GILCHRIST D'OENCH

Major: Government. WRTC; Jesters; Political Science Club; Phi Kappa Psi. Prepared at St. Paul's School.



LOUIS ARTHUR DOMINGUE

Major: English. Senate; Chapel Cabinet; Christian Association; Track, Varsity Manager; Delta Phi, Recording Secretary, President. Prepared at Andover Academy.



FRED McLEAN DOLE

Major: English. IVY, Photography Editor; Tripod; Public Relations Office Photographer. Prepared at Loomis School.



WILLIAM MILLEN DUNCAN

Major: Philosophy. Sports Car Club; Flying Club; Corinthian Yacht Club; St. Anthony Hall. Prepared at Cranbrook.

MARK EVAN FAIRBANKS

Major: Religion. *IVY*; Pipes and Drums; Spanish Club; Psychology Club; Rowing Association; Soccer, Manager. Prepared at Holderness.

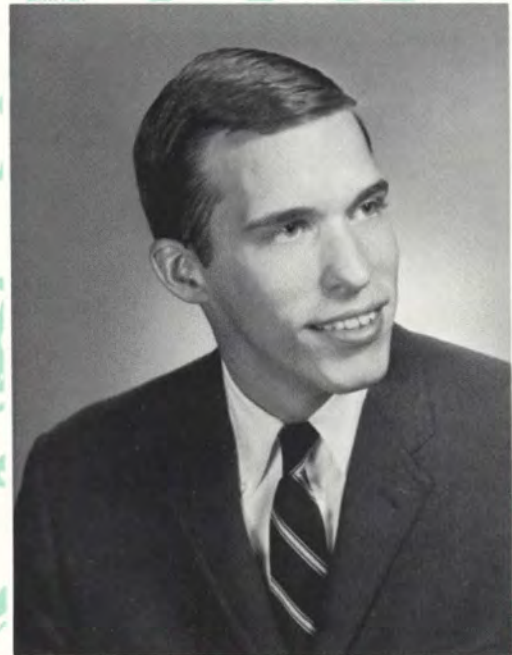


SHERWOOD ANTHONY FEHM, JR.

Major: History. Glee Club; Football, Manager; Baseball, Manager. Prepared at Hamden Hall Country Day School.

DONALD ARCHIBALD  
DUNSFORD, JR.

Major: Government. Athenaeum; Economics Club; Political Science Club; Young Republicans; WRTC; Phi Kappa Psi. Prepared at Governor Dummer Academy.



HENRY WHIPPLE FARNUM, JR.

Major: History. Young Republicans; Track; St. Anthony Hall. Prepared at St. Paul's School.



**JAMES KIP FINCH, II**

Major: Interdepartmental Science. Swimming; Pi Kappa Alpha. Prepared at South Kent School.

**PETER VAN DYKE FISH**

Major: English. Review; Jesters; Senior Lay Reader; Delta Kappa Epsilon. Prepared at St. Andrews.



**ROBERT JOHN FLORIANI**

Major: Modern Languages. Glee Club; Newman Club. Prepared at Bulkeley High School.

**ANDREW HOTSON FORRESTER**

Major: History. Sophomore Dining Club; Christian Association; Soccer; Swimming; Track; Alpha Delta Phi. Prepared at William Hall High School.



**JAMES PIERCE FOX**

Major: History. Newman Club; Junior Advisor; Basketball; Baseball; Alpha Chi Rho. Prepared at Lanphier High School.



**WALTER ALBERT FREY, III**

Major: English. Carilloneurs; Glee Club; Vestry; Junior Advisor; Freshman Executive Council; Senior Lay Reader; Swimming; Lacrosse; Delta Phi. Prepared at Gilman.



**GEORGES RENE FRAISE**

Major: History. Newman Club; Economics Club; Theta Xi. Prepared at Suffield Academy.

**ARNOLD MORRIS FRIEDMAN**

Major: Philosophy. Hillel Club, Secretary. Prepared at Taylor Allderdice High School.



**DAVID FORREST GATES**

Major: Economics. Senate; Vestry; Athenaeum Society; Economics Club; Junior Advisor; Senior Lay Reader; Pi Kappa Alpha. Prepared at Needham High School.



**EDWARD TROTTER GOODMAN**

Major: Government. Young Republicans; Corinthian Yacht Club; Sports Car Club; Swimming; St. Anthony Hall. Prepared at St. Paul's School.



**HAROLD PAUL GEETTER**

Major: Pre-Medical. Glee Club; Hillel Club. Prepared at Hartford Public High School.



**JONATHAN GORDON GRANGER**

Major: Religion. Tennis; Phi Kappa Psi. Prepared at New Hampton Prep.

WENDELL ARTHUR GUY

Major: History. Tripod, Features Editor; Marching Band. Prepared at Hamden High School.

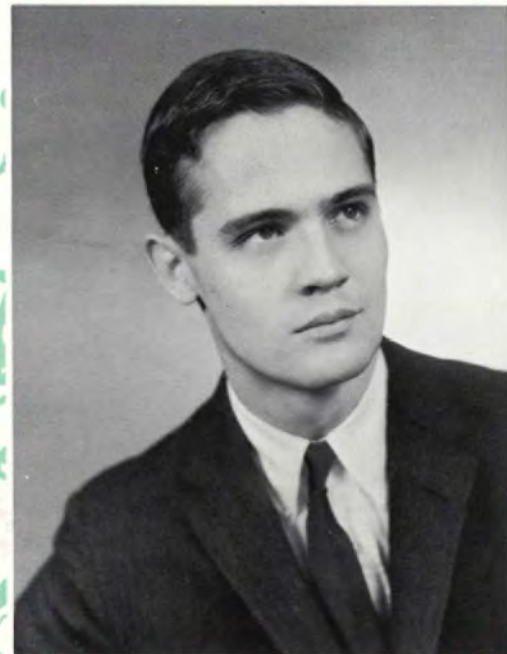


ROSS DAVID HALL

Major: German and Modern Languages. Delta Phi Alpha, Secretary-Treasurer; Archive; WRTC; Chamber Players, President; Le Cercle Français, President; Italian Club; Young Republicans; Sports Car Club. Prepared at Cambridge School.

DAVID ALAN GRANT

Major: Music. WRTC; Young Republicans; Corinthian Yacht Club; Sports Car Club; St. Anthony Hall. Prepared at Brooks School.



THEODORE HERMAN HAGEMAN, JR.

Major: English. Jesters; Delta Kappa Epsilon. Prepared at Bacon Academy.

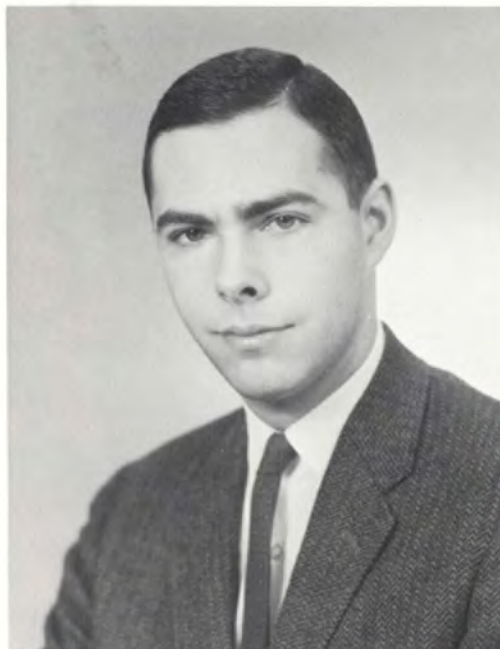


**ROBERT ELLSWORTH HARNED**

Major: English and Religion. Archive; Chapel Choir; Marching Band; Glee Club, Manager; Vestry, Treasurer; Young Republicans. Prepared at Sewanhaka High School.

**ROBERT MORGAN HARTING**

Major: Government. WRTC, Public Relations Director; Glee Club, President; Political Science Club; Young Republicans; Delta Phi. Prepared at William Penn Charter.



**LAWRENCE REED HARRIS, JR.**

Major: Philosophy. Chapel Choir; Marching Band; Chapel Cabinet; Vestry, Senior Warden; Delta Phi, Treasurer. Prepared at St. Andrew's.

**RICHARD OSCAR HILL, JR.**

Major: Mathematics. WRTC; Glee Club; Christian Association; Physics Club; Campus Chest. Prepared at Bogota High School.



**CHARLES LANCE HOFFMAN**

Major: Philosophy. Jesters; Philosophy Club; Campus Chest; Junior Advisor; Freshman Executive Council; AFROTC; Swimming; Phi Kappa Psi. Prepared at Amundsen High School.



**MERRILL ROBERTS HUNT**

Major: History and Fine Arts. Tripod; Young Republicans; Campus Chest; Interfraternity Council; Corinthian Yacht Club; Mather Hall Student Board; Psi Upsilon. Prepared at New Hampton School.



**ROBERT MELVIN HOPKINS, JR.**

Major: Interdepartmental Science. WRTC, Chief Engineer; Jesters, Vice-President. Prepared at Gilman School.

**ROBERT GARDNER HUNT**

Major: Psychology. Chapel Choir; Psychology Club; Senior Lay Reader; Acolyte; Track; Cross Country. Prepared at Wellesley High School.





**ROBERT WALTER IERLEY**

Major: Classics. Chapel Choir; Glee Club. Prepared at Peddie.



**JOHN HENDERSON JEVNE**

Major: Fine Arts. WRTC; Phi Kappa Psi. Prepared at Loomis.



**SAUVEUR ITALO INTAGLIATA**

Major: Interdepartmental Science. Le Cercle Français; Italian Club; Soccer; Brownell Club. Prepared at Berkeley High School.



**PAUL ARTHUR JOHNSON, JR.**

Major: History. Chapel Choir; Glee Club; Fencing. Prepared at Collingswood High School.

**ROLAND TORSTEN JOHNSON**

Major: Economics. Basketball; Baseball, Captain; Dan Webster Baseball Award; Q.E.D. Prepared at Newton High School.



**JOHN WILLIAM KAPOUCH**

Major: Economics. Pi Gamma Mu; Athenaeum Society, President; Economics Club; Young Republicans. Prepared at Darien High School.

**THOMAS STEPHEN JOHNSON**

Major: Economics. WRTC; Newman Club, Secretary; Junior Advisor; Freshman Executive Council; Theta Xi. Prepared at St. Catherine High School.



**DONALD HERBERT JONES**

Major: History. Pi Gamma Mu; Chapel Choir; Young Republicans; Senior Lay Reader. Prepared at Hempstead High School.

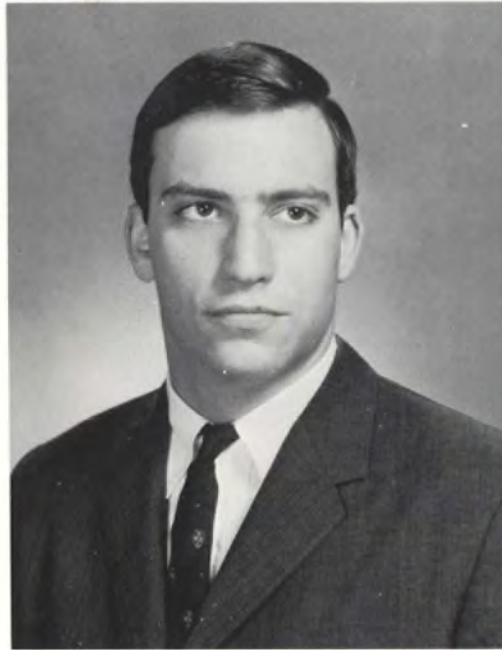


**ROBERT JOSEPH KELLEHER**

Major: Economics. Newman Club; Brownell Club. Prepared at Conard High School.

**WARREN OAKS KESSLER**

Major: Pre-Medical. Sophomore Dining Club; WRTC; Economics Club; Corinthian Yacht Club; Alpha Delta Phi, Secretary. Prepared at Lawrenceville.



**THOMAS MORGAN KELLY**

Major: History. Tripod; Archive; WRTC; Art League; Committee Organized to Defend Equality; Freshman Executive Council; Pi Kappa Alpha. Prepared at Radnor High School.

**BRADFORD WELLS KETCHUM, JR.**

Major: English. Campus Chest; Intramural Board, Secretary; Senior Lay Reader; Football; Track; Canterbury Club; Delta Phi, Vice-President. Prepared at Salisbury School.



**FRANK ROSS KING, JR.**

Major: Economics. Spanish Club; Political Science Club, Vice-President; AFROTC; Phi Kappa Psi, Vice-President. Prepared at St. Andrews.



**PETER JOHN KNOP, II**

Major: History. Pipes and Drums; Flying Club; Junior year abroad. Prepared at St. George's School.



**HENRY DuBOIS KISOR**

Major: English. WRTC; Junior Advisor; Swimming; Lacrosse; Theta Xi, Secretary. Prepared at Evanston Township High School.

**ALEXANDER JOHN KOPPER**

Major: Philosophy. Glee Club; Christian Association; Philosophy Club; Track. Prepared at Valley Regional High School.



**JOHN FREDERICK KRAFT, III**

Major: Economics. Basketball; Golf; Sigma Nu. Prepared at Lawrenceville.



**PAUL JOSEPH LA ROCCA**

Major: English and History. Tripod; Archive; Italian Club; Political Science Club; Brownell Club, President. Prepared at East Hartford High School.



**RICHARD PAUL KROCZYNSKI**

Major: Biology. Newman Club; Concert Band; Marching Band; Pipes and Drums; Lacrosse; Cross Country; Track; Pi Kappa Alpha. Prepared at Millburn High School.

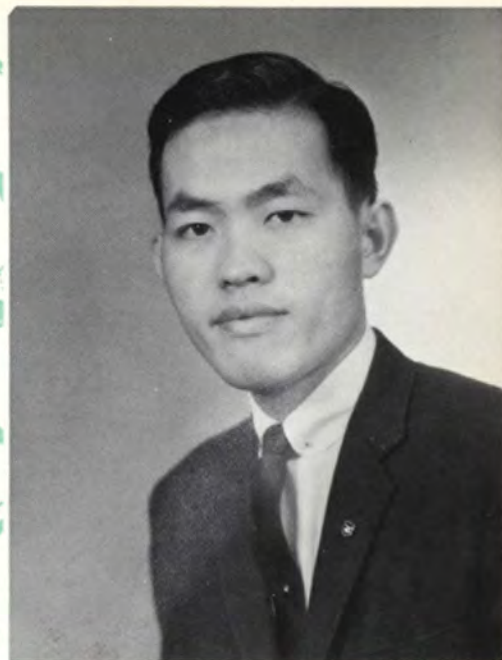


**NATHANIEL LARRABEE, II**

Major: Fine Arts. Spanish Club; Art Guild, President; Economics Club. Prepared at Choate.

**BRUCE EUGENE LEDDY**

Major: History. Campus Chest; Soccer; Squash; Tennis; St. Anthony Hall. Prepared at Holderness.



**HIN-SEAK LENG**

Major: Government. Tripod; Political Science Club, President; Soccer; Phi Kappa Psi. Prepared at St. Xavier's Institution.

**WILLIAM SORAN LEAHY**

Major: Engineering. Medusa; Sophomore Dining Club; Newman Club; Engineering Club; Junior Advisor; Football; Baseball; Alpha Chi Rho, President. Prepared at Highland Park High School.



**DAVID EDWARD LEE**

Major: Psychology. Senate; Psi Chi; Carilloneurs; Chapel Choir; Vestry, Registrar; Intramural Board; Senior Lay Reader; Mather Hall Board of Governors; Phi Kappa Psi. Prepared at Central Dauphin High School.



**ROBERT LOUIS LEVY**

Major: Philosophy. Hillel Club; Philosophy Club; Young Democrats. Prepared at Francis W. Parker High School.

**BARNETT LIPKIND**

Major: History. Tripod, Business Manager; Glee Club, Treasurer; Hillel Club; Le Cercle Français; Young Democrats; Brownell Club. Prepared at Weaver High School.



**LAURENCE RYNES LEWINN**

Major: Pre-Medical. Tripod; Marching Band; Cheerleaders; Swimming; Chapel Cabinet; Alpha Chi Rho. Prepared at Cheltenham High School.

**MALCOLM LLOYD**

Major: Fine Arts. Ivy, Literary Editor; Review, Editor; Jesters; Art League, Vice President. Prepared at South Kent.



**THOMAS LLOYD**

Major: History. Rowing Association; Campus Chest; Football; St. Anthony Hall. Prepared at St. Paul's School.



**MICHAEL BARR LONG**

Major: Romance Languages. Le Cercle Français; Italian Club; Spanish Club; Track; Cross Country. Prepared at Lawrenceville.

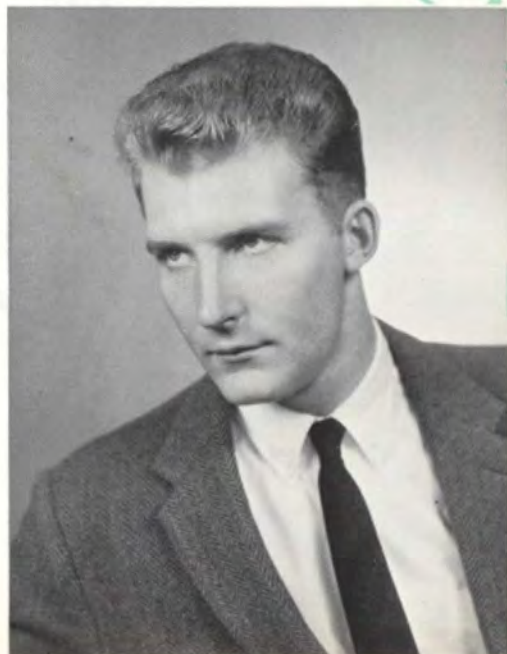


**STEPHEN HAMRICK LOCKTON**

Major: History. Corinthian Yacht Club; Rowing Association; Campus Chest; Swimming; Track; Saint Anthony Hall. Prepared at Lawrenceville.

**BORIS MICHAEL LUTS**

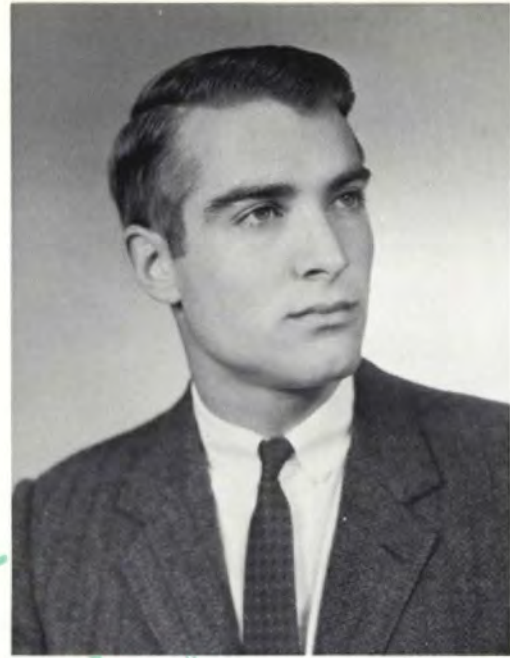
Major: German and Romance Languages. Delta Phi Alpha; Le Cercle Français. Prepared at Kent.





DAVID ARTHUR LYNDE

Major: Mathematics. Christian Association; Spanish Club; Pi Kappa Alpha. Prepared at Mount Hermon.



DONALD MACKAY, III

Major: Religion and Fine Arts. Spanish Club; Art League; Young Republicans; Sports Car Club; Senior Lay Reader; Sigma Nu. Prepared at Shattuck.



MICHAEL STEWART LUTIN

Major: Romance Languages. Senate; Spanish Club; Campus Chest; Junior Advisor; Senior Lay Reader; Fencing; Delta Kappa Epsilon, Vice-President. Prepared at Weaver High School.



ROBERT WALLACE MACLEOD

Major: Fine Arts. Corinthian Yacht Club, Commodore; Campus Chest; St. Anthony Hall. Prepared at Noble and Greenough.

**ROBERT JAMES MASON**

Major: Interdepartmental Science. Sigma Pi Sigma; Campus Chest, Chairman; Delta Kappa Epsilon, President. Prepared at Milwaukee Country Day School.



**JAMES HENRY McCONNELL**

Major: Religion. Folksingers; Pipes and Drums; Cheerleaders; Soccer; Phi Kappa Psi. Prepared at Hill.

**JAMES EDWARD MARYAK**

Major: Economics. Marching Band, President; Interfraternity Council; AFROTC; Track; Sigma Nu. Prepared at Milford High School.



**JAMES SHUBAL McALISTER, III**

Major: Economics. Economics Club; Junior Advisor; Swimming; Track; Alpha Chi Rho, Vice-President. Prepared at Columbia High School.



**JOSIAH GALVIN McCracken, III**

Major: Fine Arts. Senate; Football; Swimming; Track; Sigma Nu, Vice-President. Prepared at Atlantic City High School.

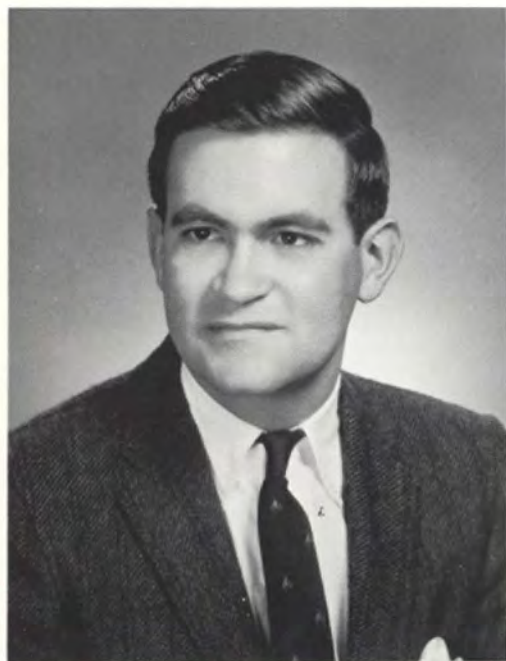
**WILLIAM GELON McKNIGHT, III**

Major: English. WRTC; Pipes; Rowing Association, Manager; St. Anthony Hall. Prepared at Hotchkiss School.



**ROBERT CHARLES McNALLY**

Major: Psychology and Romance Languages. Psi Chi, President; Archive; Newman Club; Le Cercle Français, President; Psychology Club, Secretary-Treasurer; Campus Chest; Freshman Executive Council; Brownell Club. Prepared at Holy Trinity High School.



**PETER MEANS McCURRACH**

Major: Economics and Fine Arts. Economics Club; Corinthian Yacht Club; Rowing Association; Swimming; St. Anthony Hall. Prepared at Deerfield Academy.



GERALD ALAN McNAMARA

Major: History. Phi Kappa Psi. Prepared at Weaver High School.



WILLIAM BRUCE McPHERSON, III

Major: History. Glee Club; Senior Lay Reader; Lacrosse; Sigma Nu, Treasurer. Prepared at St. Paul's School.



ARTHUR FREDERICK  
McNULTY, JR.

Major: Philosophy. Senate, President; Medusa; Sophomore Dining Club; WRTC; Vestry, Junior Warden; Athenaeum Society; Philosophy Club; Young Republicans; Junior Advisor; Canterbury Club, President; Theta Xi. Prepared at Williamsport High School.

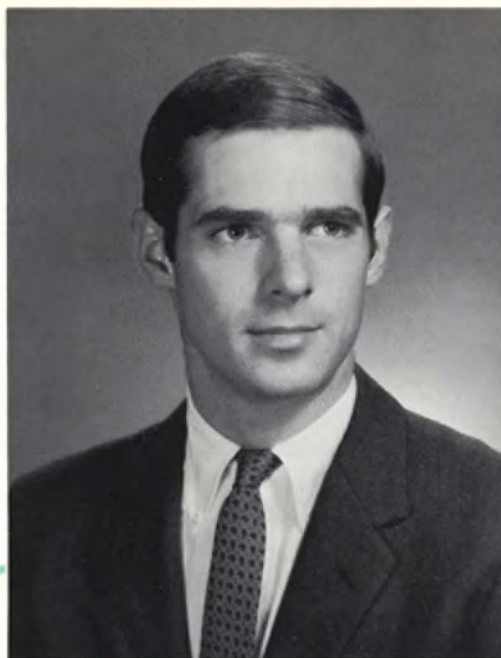
PETER JAMES MEEHAN

Major: Economics. Campus Chest; Lacrosse; Sigma Nu, President. Prepared at Hopkins Grammar School.



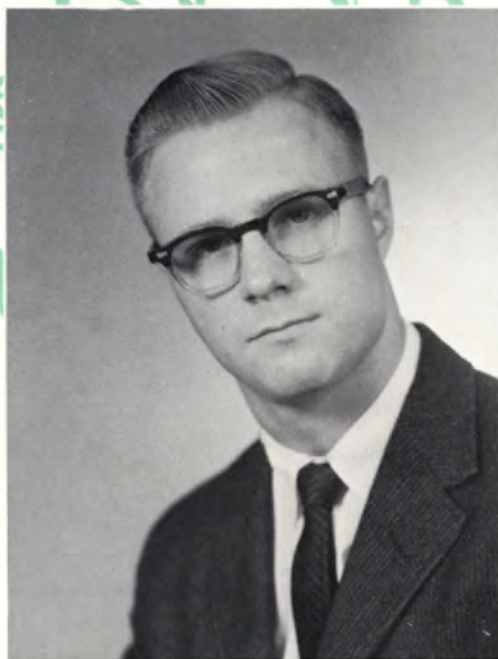
WAYNE GRAVER MEHRINGER

Major: Religion. Track; Alpha Chi Rho. Prepared at Malverne High School.



JOHN MATTHEW MEYER, III

Major: English. Tripod; Jesters; Spanish Club; Corinthian Yacht Club; Rowing Association, Treasurer; Senior Lay Reader; St. Anthony Hall. Prepared at St. Paul's School.



FREDERICK ULMER METCALF, JR.

Major: Psychology. Psi Chi; WRTC; Glee Club; Psychology Club; Young Republicans; Soccer. Prepared at South Side High School.

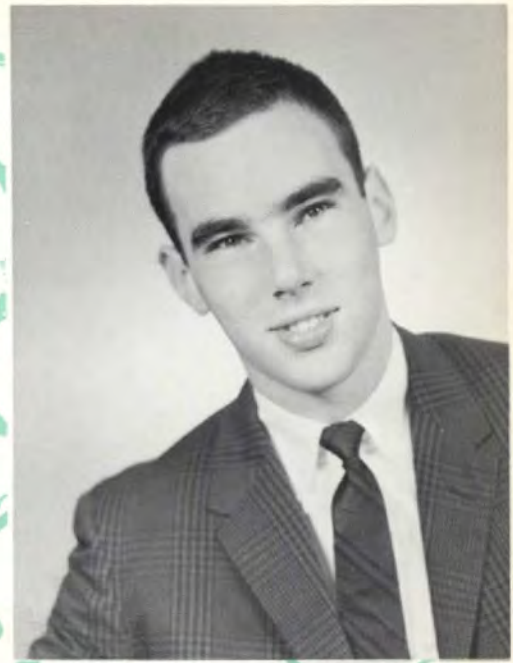


ANDREW JAMES MILLER

Major: History. Ivy; Tripod; Hillel Club; Art League; Cheerleaders; Campus Chest; Intramural Board; Football; Basketball; Pi Kappa Alpha. Prepared at Bronx High School of Science.

**CHARLES BAIRD MORGAN, JR.**

Major: History. Ivy, Sports Editor, Managing Editor; Senate, Recording Secretary, Vice-President and Treasurer; Sophomore Dining Club; Rowing Association, President; Junior Advisor; Class Officer, Vice-President; Soccer, Co-Captain; Swimming; Track; Saint Anthony Hall. Prepared at Haverford.



**ADAM SUTHERLAND MOTT**

Major: Romance Languages. Folksingers; Pipes and Drums, Secretary-Treasurer; Jesters; Young Republicans; Soccer. Prepared at Sidwell Friends.

**WILLIAM HENRY LEDGER  
MITCHELL, III**

Major: Government. Senate; Corinthian Yacht Club; Intramural Board; Young Republicans, Secretary; Psi Upsilon; Undergraduate Admissions Committee, Chairman. Prepared at Belmont Hill School.



**PETER BILL MORRILL**

Major: Religion. Senate; Christian Association; Athenaeum Society; Economics Club; Philosophy Club; Young Republicans; Campus Chest. Prepared at Ridgewood High School.



**ROBERT FRANKLIN MUTTART**

Major: Religion and Modern Languages. Christian Association; Senior Lay Reader; Baseball; Alpha Chi Rho. Prepared at Norwich Free Academy.

**JOSEPH VINCENT NARDIELLO**

Major: Romance Languages. Marching Band; Newman Club; Jesters, President; Italian Club. Prepared at Crosby High School.



**ROGER EDWIN NELSON**

Major: History. Senate, Corresponding Secretary; Pi Gamma Mu; Athenaeum Society, Recording Secretary; Jesters; Young Republicans; Freshman Executive Council; Senior Lay Reader. Prepared at Braintree High School.



**MANNING MARTIN MYERS**

Major: History. Tripod; WRTC; Psi Upsilon. Prepared at Berkshire.



**ROBERT CLIFFORD NIELSEN**

Major: Economics, Economics Club; Young Republicans.  
Prepared at Hartford Public High School.



**JOHN CHARLES NORMAN**

Major: History and Spanish. Senate; Spanish Club;  
Junior Advisor; Basketball, Captain; Q.E.D., Vice-Presi-  
dent. Prepared at Weaver High School.



**MICHAEL CROMBIE NIVEN**

Major: English. Trinidads; Junior Advisor; Phi Kappa  
Psi, Vice President, President. Prepared at Cate School.

**KEVIN LAWRENCE O'BRIEN**

Major: Government. Marching Band; Chapel Cabinet;  
Newman Club, President; Jesters; Political Science Club;  
Young Democrats; Campus Chest; Freshman Executive  
Council. Prepared at Belmont High School.





**DONALD ARCHIBALD PAPA**

Major: Economics. Tripod; Soccer; Q.E.D. Prepared at Guilford High School.



**ROBERT EDWARD PERDUE**

Major: Psychology. Psi Chi; Psychology Club; Senior Loy Reader; Canterbury Club; Acolytes. Prepared at Central High School.



**KENNETH JOSEPH PEDINI**

Major: Philosophy. Glee Club. Prepared at Conard High School.



**OLIVER PERIN**

Major: History. Campus Chest; Track; St. Anthony Hall. Prepared at Hill.

**WILLIAM MECKLENBERG POLK**

Major: History and Religion. Medusa; Pi Gamma Mu; Sophomore Dining Club, President; Junior Advisor; Freshman Executive Council; Class Officer, President; Football, Co-Captain; Baseball, Co-Captain; Hockey; Porter Award; St. Anthony Hall. Prepared at Groton.

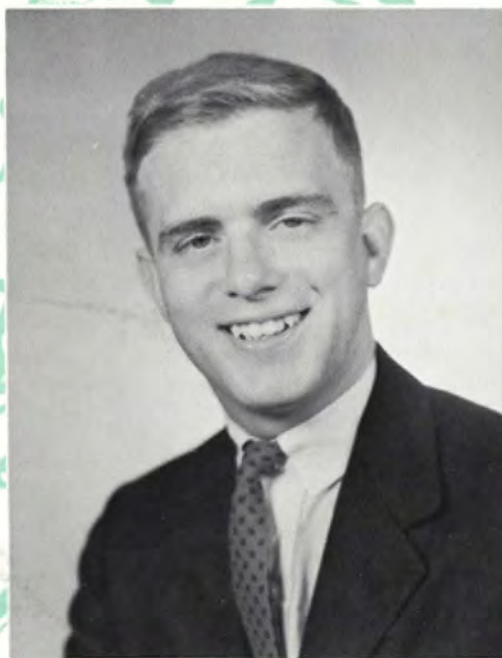


**ROBERT ERNEST RAEDER**

Major: Music. Campus Chest; Squash; St. Anthony Hall. Prepared at Millbrook.

**DONALD ALEXANDER PINE**

Major: Religion. Delta Phi Alpha; Tripod, Advertising Manager; Freshman Executive Council. Prepared at Clarke County High School.



**FREDERICK MAURICE PRYOR**

Major: Economics. Senate; Tripod; WRTC; Economics Club; Young Republicans; Corinthian Yacht Club; Junior Advisor; Theta Xi. Prepared at Pomfret.



**GEORGE I. RAND**

Major: English. Review, Board of Editors; WRTC; Track; Fencing. Prepared at Friends Academy.

**ALAN COE REDFORD**

Major: Interdepartmental Science. Marching Band, Business Manager; Campus Chest; Freshman Executive Council; AFROTC. Prepared at Canton High School.



**PETER STEPHEN REINTHALER**

Major: Music. Chamber Players, President; Marching Band; Glee Club, Vice-President; Amateur Radio Society, Vice-President; Brownell Club. Prepared at Solebury.



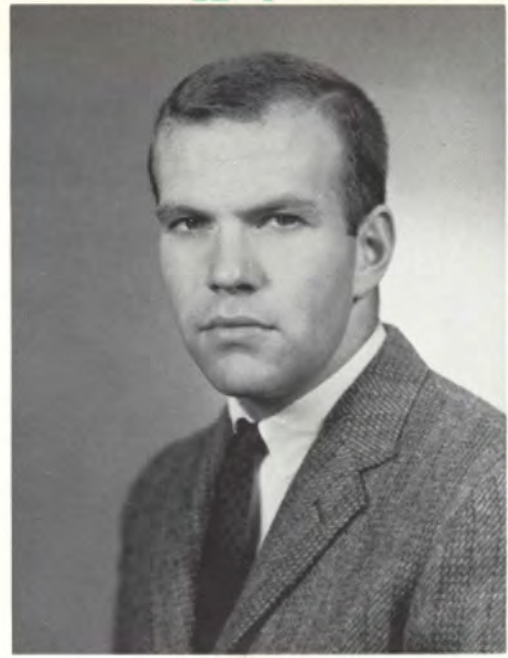
**GEORGE ALASTAIR RAYMOND**

Major: Psychology. Psi Chi; Archive; Psychology Club; Philosophy Club; Young Democrats; Campus Chest; Freshman Executive Council; Soccer; Brownell Club. Prepared at Friends Seminary.



LOUIS ANTHONY RENZA

Major: English. Review, Board of Editors, Editor-in-Chief; Alpha Chi Rho, Secretary. Prepared at Wethersfield High School.



JUDSON MORGAN ROBERT

Major: Economics. Sophomore Dining Club; Economics Club; Campus Chest; Freshman Executive Council, Secretary-Treasurer; Football; Alpha Delta Phi. Prepared at Crosby.



WILLIAM CHASE RICHARDSON

Major: History. WRTC, Chief Announcer, Program Director, Station Manager; Le Cercle Français; Committee Organized to Defend Equality, Chairman; Junior Advisor; Senior Lay Reader; Theta Xi. Prepared at Choate.

FREDERICK BRUCE ROBINSON, JR.

Major: Religion. Soccer; Delta Kappa Epsilon. Prepared at Salisbury.



DENNIS BRUCE RODGERS

Major: Interdepartmental Science. Ivy; WRTC; Marching Band, Librarian, Business Manager; Christian Association; Physics Club; Junior Advisor; Freshman Executive Council; Alpha Chi Rho. Prepared at Stephen Decatur High School.



ROBERT JOSEPH ROXBY

Major: Romance Languages. Glee Club. Prepared at New Britain High School.



JOHN SCOTT RODGERS

Major: English. Chapel Choir. Prepared at Suffield Academy.



ALLAN MICHAEL RUDNICK

Major: Economics. Chapel Cabinet; Hillel Club, Secretary; Interfraternity Council; Mather Hall Student Board; Squash; Alpha Chi Rho. Prepared at Brookline High School.

**RICHARD BRANT SANKEY**

Major: English. Cheerleaders, Co-Captain; Swimming; Theta Xi. Prepared at Western Reserve Academy.



**WILLIAM FREDERICK SAUTER**

Major: Government. Young Republicans; Corinthian Yacht Club; Sports Car Club; Campus Chest; Swimming; Track; Psi Upsilon. Prepared at Episcopal Academy.

**WILLIAM BERNARD RYAN**

Major: History. Newman Club; Brownell Club. Prepared at Newington Senior High School.



**CHARLES WESLEY SARGENT**

Major: Economics. Football; Baseball; Alpha Chi Rho. Prepared at West Islip High School.

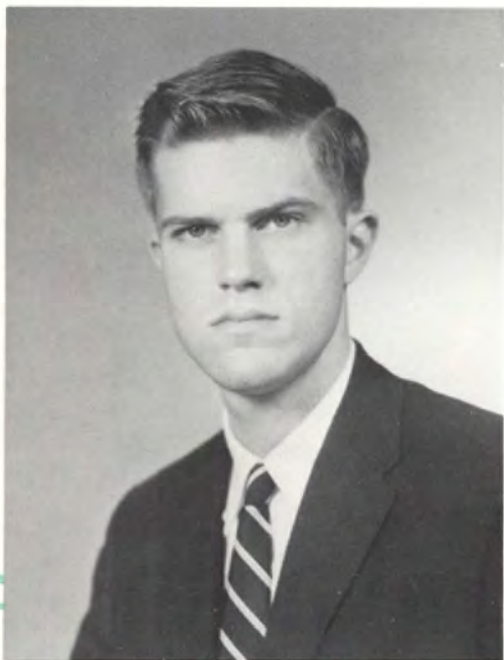


**LOUIS FRED SCATURRO**

Major: History. Glee Club; Newman Club; Campus Chest; Intramural Board; Bishop's Men; Track; Delta Kappa Epsilon. Prepared at Millburn High School.

**FRANK LEWIS SEARS, II**

Major: English. Senate; Medusa; Tripod; Sophomore Dining Club; Pipes and Drums; Spanish Club; Junior Advisor; Football; Basketball; Lacrosse; Alpha Delta Phi, President. Prepared at Darrow.



**WILLIAM PALMER SCULLY**

Major: Economics. Sophomore Dining Club; Economics Club; Basketball; Golf; Alpha Delta Phi. Prepared at Trinity-Pawling School.

**MARK SHAPIRO**

Major: Mathematics and Physics. Sigma Pi Sigma, Vice-President; Delta Phi Alpha; Marching Band; Physics Club; Brownell Club. Prepared at Weaver High School.



STUART LEWIS SHARPE

Major: Engineering. Christian Association; Jesters; Engineering Club, President; Physics Club; Baseball; Basketball; Alpha Chi Rho. Prepared at Bethlehem Central High School.



RICHARD GERALD SHECHTMAN

Major: Psychology. Psi Chi; Hillel Club; Psychology Club; Soccer. Prepared at Loomis Institute.



GEORGE TAFT SHAW

Major: History and French. Chapel Choir; Corinthian Yacht Club; Acolytes. Prepared at Pomfret.

JEFFREY GRIFFING SHELEY

Major: Government and History. Economics Club; Football; Soccer; Alpha Delta Phi. Prepared at New London High School.





**STEPHEN FISHER SHORT**

Major: Physics. Marching Band, Property Manager; Flying Club, Secretary; Protestant Fellowship, Secretary; Sigma Nu. Prepared at Lower Merion High School.



**FRANK CLAWSON SMITH**

Major: English. Christian Association; Le Cercle Francais; Young Republicans; Corinthian Yacht Club; Sports Car Club; Senior Lay Reader; Soccer; Sigma Nu. Prepared at Kent School.



**DAVID WHITTIER SIFTON**

Major: English. Tripod; Review; Art League; Young Republicans. Prepared at Trinity School.



**MARKLEY ELDRIDGE SMITH**

Major: Religion. Senate; Sophomore Dining Club; WRTC; Pipes and Drums; Track, Captain; Alpha Delta Phi. Prepared at Haverford.

**JAMES DOUGLAS SPENCER**

Major: Religion. Glee Club; AFROTC; Rifle Team, Manager; Q.E.D. Prepared at East Providence High School.

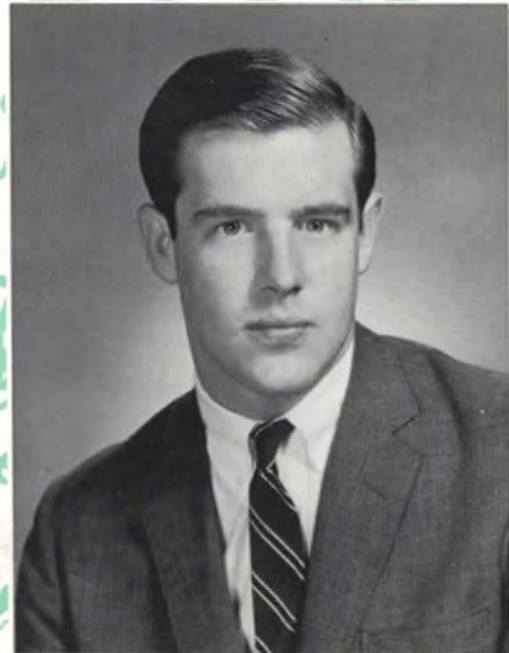


**GEORGE ANDREW  
STEINMULLER, JR.**

Major: Government. Corinthian Yacht Club; Squash; Tennis. Prepared at Darrow.

**BENJAMIN SOUTHWICK**

Major: Economics. Le Cercle Français; Economics Club, Vice-President; Young Republicans. Prepared at Blair Academy.



**SHEPARD COLEGROVE SPINK**

Major: English and Fine Arts. Tripod; Sophomore Dining Club; Review; WRTC; Campus Chest; Soccer; Lacrosse; Alpha Delta Phi. Prepared at Phillips Academy.



**HARRISON CRAWFORD STETLER**

Major: Chemistry. WRTC; Chemistry Club; Freshman Executive Council; Delta Phi. Prepared at Roxborough High School.

**ANDREW TURNER STEWART**

Major: Romance Languages. Jesters; Le Cercle Français; Spanish Club; Fencing, Co-Captain; Phi Kappa Psi. Prepared at Holderness School.

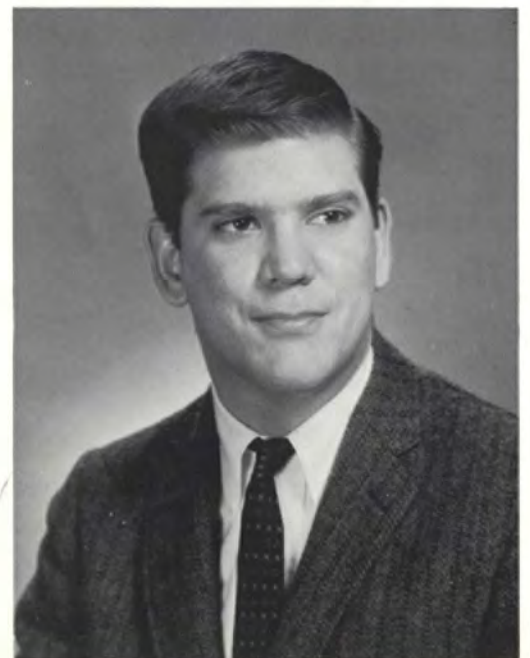


**JOHN BURTON STEVENS**

Major: Religion. Christian Association; Young Republicans; Football; Basketball; Sigma Nu. Prepared at Lawrenceville.

**PHILIP RENNELAER  
STOCKWELL, JR.**

Major: History. Political Science Club; Phi Kappa Psi. Prepared at Blair Academy.



DAVID WELLES STRAWBRIDGE

Major: History. Vestry; Jesters; Campus Chest; Companionship Program; Theta Xi. Prepared at Haverford.



JAMES ROSS SWEENEY

Major: History. Senate; Pi Gamma Mu; Carilloneurs; Chapel Choir; Vestry; Athenæum Society, Corresponding Secretary; Committee of 100; Young Republicans; Freshman Executive Council; Senior Lay Reader. Prepared at Bartlett High School.



PAUL RYAN SULLIVAN

Majors: Philosophy and Pre-Medical. Archive; Glee Club, Librarian; Physics Club; Philosophy Club; Delta Phi, Corresponding Secretary. Prepared at Suffield Academy.

JOHN LAUGHLIN SWOPE, III

Major: Economics. WRTC; Jesters. Prepared at Gilman.



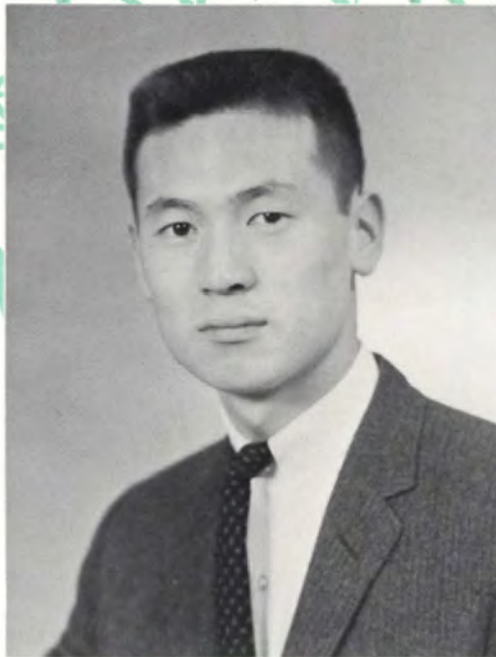
**JOHN CHRISTOPHER SYER**

Major: History and Government. Ivy; Tripod; Political Science Club; Campus Chest; Intramural Board; Track; Cross Country; Theta Xi. Prepared at Thacher School.



**BRUCE ALDEN THAYER**

Major: Biology and Pre-Medical. Senate; Carilloneurs, Master Carillonneur; Vestry; Athanaeum Society; Young Republicans; Canterbury Club. Prepared at North High School.



**ILHI SYN**

Major: German Literature. Delta Phi Alpha; Soccer. Prepared at Kent School.



**DAVID DWIGHT THOMAS**

Major: Biology. Art League; Canterbury Club. Prepared at Choate.

**WILLIAM HUTCHINS TURNER, III**

Major: History. Campus Chest; Freshman Executive Council; Canterbury Club; Young Republicans; Delta Phi, Secretary. Prepared at Kent School.



**DAVID ALLEN WADHAMS**

Major: Economics. Tripod, Advertising and Business Manager; Economics Club, President; Young Republicans. Prepared at Wamogo Regional High School.

**DAVID PAUL TRAUT**

Major: Economics. Soccer; Basketball; Golf; Q.E.D. Prepared at Wethersfield High School.



**PETER CARMELO VINCENZO**

Major: Chemistry. Newman Club; Brownell Club. Prepared at Meriden High School.



**RALPH RAY WARREN**

Major: Religion and History. Campus Chest; Football; Alpha Delta Phi. Prepared at Kent School.

**JAMES PAYTON WHITTERS, III**

Major: History. Sophomore Dining Club; Spanish Club; Young Republicans; Football; Track; Alpha Delta Phi. Prepared at Choate.



**RICHARD ARTHUR WERNER**

Major: English. Glee Club; Young Republicans; AFROTC; Campus Chest; Basketball; St. Anthony Hall. Prepared at Kingswood.

**ARTHUR HENRY WILEY**

Major: History. WRTC; Corinthian Yacht Club; Canterbury Club; Pi Kappa Alpha. Prepared at Notre Dame High School.



**FREDERIC PETER WILLIAMS, JR.**

Major: Philosophy and History. Philosophy Club; Sports Car Club; Interfraternity Council; Senior Lay Reader; Basketball, Assistant Manager; Cross Country; Q.E.D., Secretary, President. Prepared at Shortridge High School.



**PHILLIP MONROE WILSON**

Major: History. Economics Club; Corinthian Yacht Club; Rowing Association; Committee of 100; Alpha Chi Rho, Treasurer. Prepared at South Kent.



**DAVID EDWARDS WILSON**

Major: Classics and History. Medusa; Young Democrats; Campus Chest; Junior Advisor; Phi Beta Kappa; Football; St. Anthony Hall. Prepared at Solebury.

**ROGER STANLEY WILSON**

Major: Pre-Medical and Biology. Pi Kappa Alpha. Prepared at Lodi High School.





CLAYTON REID WOODBURY

Major: Psychology. Interfraternity Council; Soccer; Baseball; Phi Kappa Psi. Prepared at Roxbury Latin School.



GEORGE MUIRSON WOOLSEY

Major: Fine Arts. Marching Band; Glee Club; Jesters. Prepared at London.



JAMES DONALD WOODRUFF, JR.

Major: History and Philosophy. Ivy; Senate; Chapel Cabinet; Vestry; Young Republicans; Sports Car Club; Campus Chest; Junior Advisor; Freshman Executive Council; Football; Basketball; Baseball; Sigma Nu. Prepared at St. Andrews.

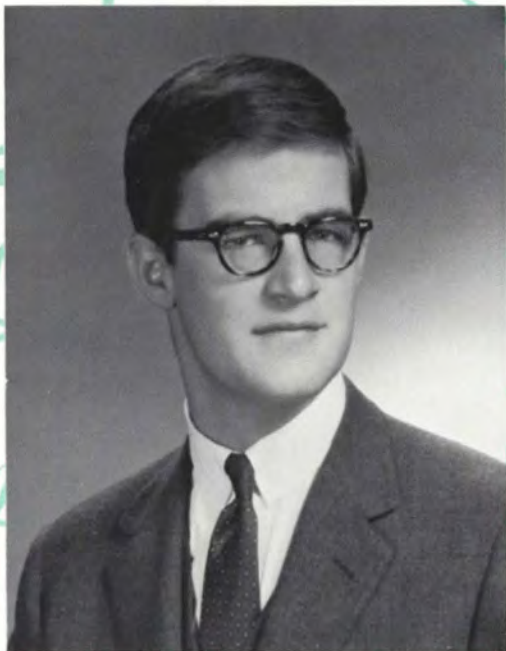


WILLIAM ALFRED WURTS

Major: Engineering. Engineering Club, Vice-President; Soccer; Brownell Club. Prepared at Kingswood.

CUMMINGS VAIL ZULL, JR.

Major: Religion. Psi Upsilon. Prepared at Millbrook.



ALBERT ZAKARIAN

Major: Government. Senate; Pi Gamma Mu; Archive;  
Young Democrats; AFROTC; Rifle Team; Brownell Club.  
Prepared at Conard High School.



*graduation weekend . . .*







David Samuel Alberts, Wisconsin, B.S.  
 Douglas Kay Anderson, Massachusetts, B.A.  
 Guy Kenneth Anderson, Florida, B.S.  
 Demos Antoniou, Connecticut, B.S.  
 David Louis Arp, Illinois, B.S.  
 Paul Bernard Ascher, Connecticut, B.A.  
     *with Honors in Government*  
 Philip Leon Babin, Connecticut, B.A.  
 John Herbert Baker, Jr., New York, B.A.  
 Bohdan Balko, Connecticut, B.S.  
 Peter Wakefield Bartol, Connecticut, B.A.  
 Hans Phillip Bauer, New York, B.S.  
 Ian Yorty Bennett, New York, B.A.  
 Richard Bradley Berkley, Florida, B.S.  
 Charles Hudson Bishop, Jr., Ohio, B.A.  
 Edward Schenck Blackwell, III, New Jersey, B.A.  
 Robert Alexander Borawski, Massachusetts, B.A.  
 Harold Richardson Borus, Pennsylvania, B.A.  
 Robert Bonner Bowler, III, Connecticut, B.A.  
 Thomas Morgan Boyd, Ohio, B.A.  
 Robert Marx Brandenberger, Connecticut, B.S.  
 Richard Chandler Brightman, Rhode Island, B.S.  
 Eric Henning Broudy, Connecticut, B.A.  
 James Dorsey Brown, III, Maryland, B.A.  
 George Browne, Connecticut, B.A.  
     *with Honors in History*  
 Thomas Freeborn Bundy, Jr., New York, B.A.  
 William Irving Bunnell, Iowa, B.A.  
 Carl Edwin Carlson, Jr., Connecticut, B.S.  
 Donald Ward Carroll, Jr., Maryland, B.A.  
 William Gundry Chase, Jr., New York, B.A.  
 Charles Henry Classen, Jr., Pennsylvania, B.S.  
 Steven James Cool, Oklahoma, B.A.  
     *with Honors in Psychology*  
 Alan Richards Coyne, New York, B.A.  
 Michael Whittington Creighton, Washington, D. C., B.A.  
 Francis Joseph Cummings, Connecticut, B.S.  
 Richard Campbell Cunneen, Connecticut, B.A.  
 Robert Hopkins Cunningham, Connecticut, B.S.  
 Samuel Gould Curtis, Connecticut, B.A.  
 Earle Newton Cutler, III, New Jersey, B.A.  
 David Gibson Daniels, Connecticut, B.S.  
 James John Darrow, Connecticut, B.A.  
 Leonard Vesper Day, Jr., Pennsylvania, B.S.  
 Rodney Dean Day, III, Pennsylvania, B.A.  
 John Arthur Wigmore Densem, Michigan, B.S.  
 John Merle Denson, New York, B.A.  
 Lawrence Gilchrist D'Oench, Washington, D. C., B.A.  
 Fred MacLean Dole, Connecticut, B.A.  
 Louis Arthur Domingue, Massachusetts, B.A.  
 William Millen Duncan, Ohio, B.A.  
 Jonathan Edwards, New York, B.A.  
 Mark Evan Fairbanks, Massachusetts, B.A.  
 Henry Whipple Farnum, Jr., Connecticut, B.A.  
 James Kip Finch, II, Connecticut, B.S.  
 Peter Van Dyke Fish, Pennsylvania, B.A.  
 James Pierce Fox, Illinois, B.A.  
 Georges René Fraise, Madagascar, B.A.  
 Richard Standish Francis, III, New Hampshire, B.S.  
 Walter Albert Frey, III, Maryland, B.A.  
 Arnold Morris Friedman, Pennsylvania, B.A.  
 David Forrest Gates, Massachusetts, B.A.  
     *Valedictorian with Honors in General Scholarship and Economics*  
 Michael Peter Getlin, Illinois, B.A.  
 Edward Trotter Goodman, Pennsylvania, B.A.  
 Jerry Bruce Gough, Illinois, B.A.  
     *with Honors in History*  
 Jonathan Gordon Granger, Massachusetts, B.A.  
 David Alan Grant, New York, B.A.  
 Wendell Arthur Guy, Jr., Connecticut, B.A.  
 Theodore Herman Hageman, Jr., Connecticut, B.A.  
 Ross David Hall, Massachusetts, B.A.  
     *with Honors in German*  
 Robert Ellsworth Harned, New York, B.A.  
 Lawrence Reed Harris, Jr., Maryland, B.A.  
 Robert Morgan Harting, Pennsylvania, B.A.  
 Richard Oscar Hill, Jr., New Jersey, B.S.  
 Charles Lance Hoffman, Illinois, B.A.  
 Robert Melvin Hopkins, Jr., Maryland, B.S.  
 Merrill Roberts Hunt, Maine, B.A.  
 Robert Gardner Hunt, Massachusetts, B.A.  
 Robert Walter Ierley, New Jersey, B.A.  
 Sauveur Italo Intagliata, Connecticut, B.S.  
 John Henderson Jevne, Connecticut, B.A.  
 Paul Arthur Johnson, Jr., New Jersey, B.A.  
 Roland Torsten Johnson, Connecticut, B.A.  
 Thomas Stephen Johnson, Wisconsin, B.A.  
 Donald Herbert Jones, New York, B.A.  
 John William Kapouch, Jr., Connecticut, B.A.  
     *with Honors in Economics*  
 Robert Joseph Kelleher, Connecticut, B.A.  
 Warren Oaks Kessler, New Jersey, B.S.  
 Bradford Wells Ketchum, Jr., New York, B.A.  
 Frank Ross King, Jr., Colombia, B.A.  
 Henry DuBois Kisor, Illinois, B.A.  
     *with Honors in English*  
 Peter John Knop, II, Virginia, B.A.  
 John Frederick Kraft, III, Pennsylvania, B.A.  
 Richard Paul Kroczyński, New Jersey, B.S.  
 Paul Joseph LaRocca, Connecticut, B.A.  
     *with Honors in English and History*  
 Nathaniel Larrabee, II, Connecticut, B.A.  
     *with Honors in Fine Arts*  
 William Soran Leahy, Jr., Illinois, B.S.  
 Bruce Eugene Leddy, Maine, B.A.  
 David Edward Lee, Pennsylvania, B.A.  
 Hin-Seak Leng, Malaya, B.A.  
     *with Honors in Government*  
 Robert Louis Levy, Illinois, B.A.  
 Laurence Rynes LeWinn, Pennsylvania, B.S.  
 Barnett Lipkind, Connecticut, B.A.  
 Malcolm Lloyd, Missouri, B.A.  
 Thomas Lloyd, Pennsylvania, B.A.

- Stephen Hamrick Lockton, Indiana, B.A.  
 Michael Barr Long, New York, B.A.  
 Michael Stewart Lutin, Connecticut, B.A.  
 Boris Michael Luts, Connecticut, B.A.  
*with Honors in German*  
 David Arthur Lynde, Massachusetts, B.S.  
 Donald MacKay, III, Montana, B.A.  
 Robert Wallace MacLeod, Massachusetts, B.A.  
 James Edward Maryak, Connecticut, B.A.  
 Robert James Mason, Wisconsin, B.S.  
 James Shubal McAlister, III, New Jersey, B.A.  
 James Henry McConnell, Ohio, B.A.  
 Josiah Calvin McCracken, III, New Jersey, B.A.  
 George Peter Means McCurrach, Florida, B.A.  
 William Gelon McKnight, III, New York, B.A.  
 Robert Charles McNally, Connecticut, B.A.  
*with Honors in Psychology*  
 Gerald Alan McNamara, Connecticut, B.A.  
 Arthur Frederick McNulty, Jr., Pennsylvania, B.A.  
 William Bruce McPherson, III, Maryland, B.A.  
 Peter James Meehan, Connecticut, B.A.  
 John Matthew Meyer, III, Connecticut, B.A.  
 Andrew James Miller, New Jersey, B.A.  
 Donald Delmonico Mills, Pennsylvania, B.A.  
 William Henry Ledger Mitchell, III, Massachusetts, B.A.  
 Charles Baird Morgan, Jr., Pennsylvania, B.A.  
 Peter Bill Morrill, New Jersey, B.A.  
 Adam Sutherland Mott, Maryland, B.A.  
 Robert Franklin Muttart, Connecticut, B.A.  
 Joseph Vincent Nardiello, Connecticut, B.A.  
 Roger Edwin Nelson, Massachusetts, B.A.  
*with Honors in History*  
 Robert Clifford Nielsen, Connecticut, B.A.  
 Michael Crombie Niven, California, B.A.  
 John Charles Norman, Connecticut, B.A.  
 Kevin Lawrence O'Brien, Massachusetts, B.A.  
*with Honors in Government*  
 Donald Archibald Papa, Connecticut, B.A.  
 Kenneth Joseph Pedini, Connecticut, B.A.  
 Robert Edward Perdue, Connecticut, B.S.  
 Oliver Perin, Maryland, B.A.  
 Donald Alexander Pine, Virginia, B.A.  
 James Edward Platts, Pennsylvania, B.S.  
 William Mecklenburg Polk, New York, B.A.  
*with Honors in History and Religion*  
 Frederick Maurice Pryor, Massachusetts, B.A.  
 Robert Ernest Raeder, Connecticut, B.A.  
 George I. Rand, New York, B.A.  
 George Alistair Raymond, New York, B.S.  
 Alan Coe Redford, Connecticut, B.S.  
 Peter Stephen Reinthaler, New Jersey, B.A.  
 Louis Anthony Renza, Connecticut, B.A.  
*with Honors in English*  
 William Chase Richardson, New Jersey, B.A.  
 Judson Morgan Robert, Connecticut, B.A.  
 Frederick Bruce Robinson, Jr., Massachusetts, B.A.  
 Dennis Bruce Rodgers, Illinois, B.S.
- John Scott Rodgers, New Jersey, B.A.  
 Robert Joseph Roxby, Connecticut, B.A.  
 Allan Michael Rudnick, Massachusetts, B.A.  
 William Bernard Ryan, Jr., Connecticut, B.A.  
 Richard Brant Sankey, Ohio, B.A.  
 Charles Wesley Sargent, New York, B.A.  
 William Frederick Sauter, Pennsylvania, B.A.  
 Louis Fred Scaturro, New Jersey, B.A.  
 William Palmer Scully, New York, B.A.  
 Frank Lewis Sears, II, Massachusetts, B.A.  
 Mark Shapiro, Connecticut, B.S.  
 Stuart Lewis Sharpe, New York, B.S.  
 George Taft Shaw, Connecticut, B.A.  
 Richard Gerald Shechtman, Connecticut, B.A.  
 Jeffrey Griffing Sheley, Connecticut, B.A.  
 Stephen Fisher Short, Pennsylvania, B.S.  
 David Whittier Sifton, New York, B.A.  
 Frank Clawson Smith, Connecticut, B.A.  
 Markley Eldridge Smith, Pennsylvania, B.A.  
 Benjamin Southwick, New Jersey, B.A.  
 James Douglas Spencer, Massachusetts, B.A.  
 Shepard Colegrove Spink, New York, B.A.  
 Harrison Crawford Stetler, Pennsylvania, B.S.  
*with Honors in Chemistry*  
 Andrew Turner Stewart, Connecticut, B.A.  
 Philip Rensselaer Stockwell, Jr., Pennsylvania, B.A.  
 David Wells Strawbridge, Pennsylvania, B.A.  
 Paul Ryan Sullivan, Connecticut, B.A.  
 James Ross Sweeney, Massachusetts, B.A.  
*with Honors in History*  
 John Laughlin Swope, III, Maryland, B.A.  
 John Christopher Syer, California, B.A.  
 Ilhi Synn, Korea, B.S.  
*with Honors in German*  
 Bruce Alden Thayer, Massachusetts, B.S.  
 David Dwight Thomas, Minnesota, B.S.  
 David Paul Traut, Connecticut, B.A.  
 William Hutchkins Turner, III, New Jersey, B.A.  
 Peter Carmelo Vincenzo, Connecticut, B.S.  
 David Allan Wadhams, Connecticut, B.A.  
 Ralph Ray Warren, Jr., New Jersey, B.A.  
 Richard Arthur Werner, Connecticut, B.A.  
 James Payton Whitters, III, Massachusetts, B.A.  
 George Frederick Will, Illinois, B.A.  
*with Honors in Religion*  
 Frederic Peter Williams, Jr., Indiana, B.A.  
 David Edwards Wilson, Wisconsin, B.A.  
*Salutatorian with Honors in General Scholarship and Classics*  
 Phillip Monroe Wilson, Connecticut, B.A.  
 Roger Stanley Wilson, New Jersey, B.S.  
*with Honors in Biology*  
 James Donald Woodruff, Jr., Maryland, B.A.  
 George Muirson Woolsey, Maryland, B.A.  
 Albert Zakarian, Connecticut, B.A.  
*with Honors in Government*  
 Cummings Vail Zuill, Jr., Bermuda, B.A.



fraternities





First Row, left to right: Pitcairn, Calabrese, Oulundsen, Hill, McAlister, Leahy, Wilson, Rodgers, Baker, Carlson. Second Row, left to right: McIntire, Sharpe, Deschamps, Foster, Leonard, Niles, Sachs, Martire, Fraser. Third Row, left to right: Wood, Rimer, Anderson, LeWinn, Parsons, Kadlic, Dietrich, Creighton,

Rudnick, Cone, Stramiello, Lenicheck. Fourth Row, left to right: Creighton, Fenrich, Post, Campbell, Lundborg, Winner, Anderson, Blackwell, Bordogna, Kraut, Anderson, Schulenberg, Sargent, Ravizza.

*Alpha Chi Rho, founded 1895; Phi Psi (Mother) Chapter, founded 1895; 114 Vernon Street. "Alpha Chi Rho is a mixture of men of varied ideals, ideas and interests, each man respecting his Brother's views, thus promoting true Brotherhood."*





*First Row, left to right: Taylor, Wardlaw, Schaefer, Bailey, Raymond, Bishop, Rianhard, Brewster, Neulander. Second Row, left to right: Anderson, Borus, Feirstein, Leinbach, Shenk, Sheley, Tomkins, McCann, Farrington, Forrester. Third Row, left to right: Sears, Smith, Deneault, Tyndall, Marmesh,*

*Brainard, Day, Moore, Schilpp, Keen. Fourth Row, left to right: Warren, Notman, Spink, Waggett, Smith, Anderson, Scully, Chandor, Whitters, Harris, Hoerr, Kessler, Robert, Fiordalis.*

*Alpha Delta Phi, founded 1832; Phi Kappa Chapter, founded 1877; 122 Vernon Street. "We of Alpha Delta Phi feel that our unique character is our brotherhood, bonded by broad and varied backgrounds and interests, a relationship that enables each man to develop his whole being — moral, social and intellectual."*



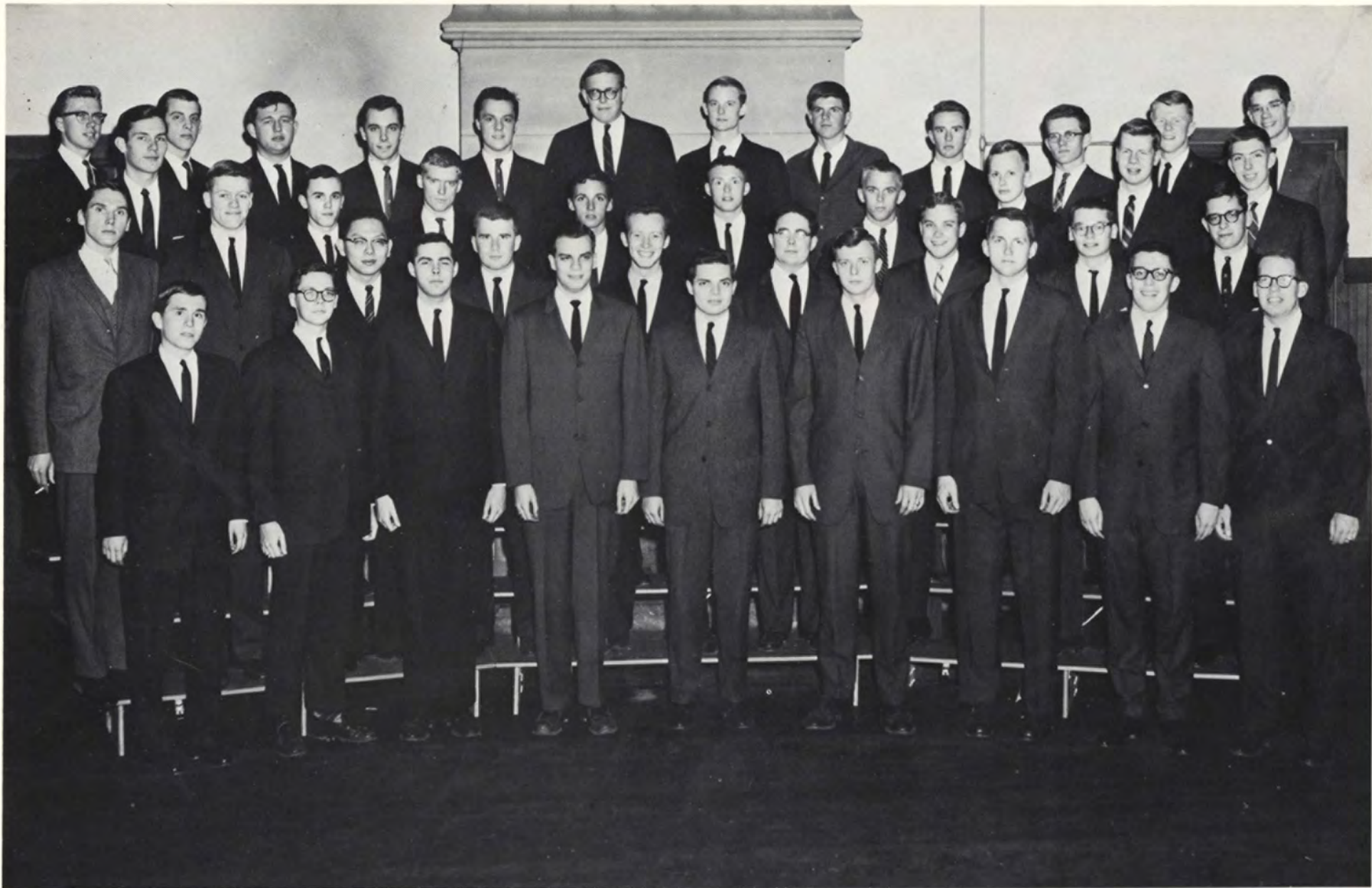


First Row, left to right: Lutin, Robinson, Imrie, Knox, Dunn, Hageman. Second Row, left to right: Scott, Reese, Boyd. Davison, Mackie. Third Row, left to right: Barnard, Brittain, Bancroft, LaMotte, Barnes,

Anderson. Fourth Row, left to right: Jones, Blair, Hammerli, Perron.

*Delta Kappa Epsilon, founded 1844; Alpha Chi Chapter, founded 1879; 98 Vernon Street. "We at Delta Kappa Epsilon are proud of being a small and cohesive brotherhood which stresses, above all else, the opportunity for individuality among our members."*





*First Row, left to right: Stetler, Sullivan, Harting, Daniels, Ketchum, Domingue, Frey, Turner, Harris. Second Row, left to right: Talley, Kirk, Chang, Goodridge, Hill, Nygard, Stier, Coxhead, Dols. Third Row, left to right: Tisdale, Kirkpatrick, Holbrook, Tousey, Files, Bailey, Twerdahl, Marcus, Ehrhardt.*

*Fourth Row, left to right: Brown, Storms, McGill, Foley, Roncaioli, Huntoon, Haslach, Roberts, Denby, Schwennesen, Westney, Ewing.*

*Delta Phi, founded 1827; Sigma Chapter, founded 1917; 70 Vernon Street. "Delta Phi is the oldest national fraternity at Trinity and is combined with the nation's oldest local fraternity, the IKA Society. Delta Phi boasts a consistent tradition of academic excellence and brotherhood of men comprising interests which reflect all aspects of college life."*







*First Row, left to right: Jevne, Leng, Granger, Lee, Dickson, Densen, Stockwell, Lloyd, Mauch. Second Row, left to right: King, Howard, Faxon, Knox, Bylin, Hoffman, Emery, Campbell, Brasfield. Third Row,*

*left to right: Masius, Emsley, Zickler, Powell, Perrin, Wright, Jenkins, Wadlow. Fourth Row, left to right: McNeill, Brackett, McLagan, Towle, Bowen, Burton, Palmer, Koretz, Witherington, Hussey.*

*Phi Kappa Psi, founded 1852; Connecticut Alpha Chapter, founded 1956; 118 Vernon Street. "Diversified interests, individualism, creativity and dynamic growth have made Phi Psi one of the top houses on campus in its six years at Trinity."*





*First Row, left to right: Finch, Miller, Denson, Wilson, Lynde, Kelly, Kroczyński. Second Row, left to right: Hollowell, Lapenn, Yonov, Casey, Robertson, Wadsworth, Carruth, Kollett, Berger. Third Row, left to right: Perreault, Fitzgerald, Baran, Coulson, Moor, Wetzel, Tetro, Grossman, James, Fletcher.*

*Fourth Row, left to right: Ostapko, Jones, Stevens, Orr, Wallace, Moeling, Mather, Washburne, Haarstick, Rubel, Schaltegger, Casadei.*

*Pi Kappa Alpha, founded 1868; Epsilon Alpha Chapter, founded 1953; 94 Vernon Street. "Pi Kappa Alpha takes pride in the ability of our brothers to assimilate their wide range of interests with each new group of men entering our ranks."*





*First Row, left to right: Crosby, Mitchell, Myers, Gaines, Hemphill, Roberts. Second Row, left to right: Scull, Sauter, Kellner, Dunkle, Williams. Third Row, left to right: McGlennen, Milbank, Wicks, Bowler.*

*Fourth Row, Left to right: Twining, Moyer, Zuill, Hunt, Haskell, Milus.*

*Psi Upsilon, founded 1833; Beta Beta Chapter, founded 1880; 81 Vernon Street. "Psi Upsilon emerged from a successful year of catastrophes, unscathed by the oppressive administration and difficult faculty. Persuing an orgiastic joie de vie, we overcame the challenge and finished the year maison sans murs."*





*First Row, left to right: Pastore, Nelson, Densem, Norman, Holroyd, Spencer, Morris. Second Row, left to right: Trickett, Bosch, Nickerson, Williams, Mosher, Gold, Kriteman, Burfeind. Third Row, left to*

*right: Rosenthal, McCutcheon, Bloomstein, Ahlgren, Cotta, McGawn, Blumberg, Pabich, Churchman.*

*Q. E. D., founded 1960 as a local fraternity; 84 Vernon Street. "Q. E. D. is an experiment, started as a protest, and still in the formulating stage. We are seeking the 'ideal' of what a fraternity should be in the college environmnt."*







First Row, left to right: McCurrach, Morgan, Bennett, Bundy, Lockton, Meyer, Farnum, Lloyd. Second Row, left to right: Marvel, White, Bond, Anning, Cunneen, Wagner, Whitney, McElwain, Kane. Third

Row, left to right: Pyle, Gilson, Howland, Miller, Crawford, Haring, Freeman, Avery, Todd, Francis.

*St. Anthony Hall (Delta Psi), founded 1847; Epsilon Chapter, founded 1850; 340 Summit Street. "St. Anthony Hall, led by an exceptional Senior class and upholding its social traditions, has completed another successful year in achieving the goals it holds valuable."*





*First Row, left to right: McPherson, Short, Maryak, Smith, Woodruff, Meehan, McCracken, Kraft, Borawski, Borawski, MacKay. Second Row, left to right: Landerman, Sinicrope, Miele, Burger, Brooks,*

*Ulbrich, Lewis, McQuaid, Boyle, Halloran. Third Row, left to right: Gordon, Silver, Auerbach, Leghorn, Saklad, Anderson, Thomases, Loi, Lintz.*

*Sigma Nu, founded 1869; Delta Chi Chapter, founded 1917; 78 Vernon Street. "Sigma Nu, one of the largest nationals in the country, has been known at Trinity for its strong house unity. Its men have common interests which center around athletics, academic achievement, and enjoyable use of leisure time."*





*First Row, left to right: Galaty, Campbell, Tozer, Levy, Landay, Watson, Reynolds, Voorhees, Farrara, Bragdon, Sankey, Linberg. Second Row, left to right: Yates, Thayer, Singleton, Peckham, Brigham, Pearson, Carroll, Richardson, White, Spitzer, Strawbridge, Rowlett. Third Row, left to right: Spencer,*

*Klotz, Watson, Waxman, Karson, Hevner, Steel, Classen, Syer, Weaver, Molinsky, Johnson, Miller. Fourth Row, left to right: MacDougall, Fish, Woolman, Lamphear, Kent, Smith, Plass, Schiro, Wheelock, Tower, Foster, de Vou, Stanley, Yocom, Bralove.*

*Theta Xi, founded 1864; Alpha Chi Chapter, founded 1949; 79 Vernon Street. "Although a young chapter at Trinity, Theta Xi is proud of its long line of student leaders and its accomplishments as a group in community affairs."*





First Row, left to right: Harrison, Adelstein, Burinskas, LaRocca, Cunningham, Murphy, Ratches. Second Row, left to right: Ryan, Johnson, Bernstein, Hallin, Kroll, Wurts, Wenger, Friedman. Third Row, left

to right: Elder, Brown, Adams, Lippitt, Feingold, Miller, McNally, Parlee, Flynn.

*“Brownell Club, founded at Trinity early in 1949, is a social organization whose object it is to provide athletic and social activities for on-campus and off-campus non-fraternty students.”*







**The Interfraternity Council**, composed of one representative from each fraternity, governs rushing and aids relationships between the houses. *Left to right: Williams, Classen, Keen, Rudnick, and Tuttle.*



# ACTIVITIES



**The 1962 IVY** has broken stagnant traditions in attempting to create a provocative, more valuable publication. *First Row:* Lloyd. *Second Row, left to right:* Jones, Tuttle, Petersen, Dole, Wood, Garson, Pyle, Vickery.



Fred MacLean Dole, photographer  
Richard Dean Tuttle, designer  
Malcolm Lloyd, writer



**The Corinthian Yacht Club** has competed in intercollegiate yacht racing for twenty-five years. *Left to right: McCurrach, MacLeod, Shaw, Elwell, Smith, Boulton.*





**The Trinity Pipes** are a lighthearted vocal group who have sung throughout the East. *First Row, left to right: Auchinloss, Morgan, Francis, Day, Steir. Second Row, left to right: Minot, Yocum, Stanley, Jansen, Richards.*



**The Hillel Foundation**, an organization of Jewish students, promotes the faith on campus. *First Row, left to right: Lippitt, Kriteiman, Blumberg. Second Row, left to right: Adelstein, Basch, Tuft, Liebowitz, Friedman, Berber. Third Row, left to right: Feingold, Gann, Rosenthal, Baran.*

**The Chanticleers** is another campus vocal group. *Front, left to right: Hamblen, Kline, Chew. Back, left to right: Storms, Wellborn, Nygard, Kirk, Fitzner, Reyburn.*







**The Review** promotes creative writing by publishing student works. *Left to right: Chatfield, Lloyd, Renza, Spencer, Fish.*

**The Economics Club** is an organization for the advancement and promotion of economic studies. *First Row, left to right: Tozzer, Gates, Dr. Battis, Pryor, Densem, Brewster, Garson, Wendell, O'Neill. Second Row, left to right: Keen, Brown, Kapouch, Southwick, Wadhams.*





**The Medusa** is a Senior honorary society whose function is to maintain college regulations. *First Row, left to right: Bennett, Anderson, Wilson, McNulty, Leahy. Second Row, left to right: Sears, Polk.*

The Crucifers lead the Sunday service processions. *Left to right: McNulty, Hoffman.*



**The Trinity Folksingers** enjoy what is new of the archaic.  
*Front, left to right: Trickett, Miele. Back, left to right: Knapp,  
St. Clair, Gann, Kirby.*



**The Political Science Club** supports awareness in political events.  
*First Row, left to right: Howard, Leng, Josephson, Osowecki, Yeaton.*  
*Second Row, left to right: D'Oench, Berber, Knop, Friedman, Shiro.*  
*Third Row, left to right: Marcuss, Doorley, Tuft, Horowitz.*





**The Senior Lay Readers** lead daily worship. *First Row, left to right: Hunt, MacKay. Second Row, left to right: Muttart, Sweeney, Harris, Nelson. Third Row, left to right: Ketchum, Gates, Lee.*

**The Junior Advisors** aid Freshmen in adjusting to college life. *First Row, left to right: Chang, Taylor, Tucker, Knisley. Second Row, left to right: Yonov, Burger, Berger. Third Row, left to right: Marcuss, McCormick, Kraut, Tiefenburn, Wardlaw, Leinbach, Bylin. Fourth Row, left to right: Perreault, Ostapko, Schulenberg, Blume, Waggett, Lewis, Molinsky, Hill, Hebel, Reynolds.*





**The Travelers** is a Freshman octet composed of Glee Club members. *First Row, left to right: Williams, Stone, Baker. Second Row, left to right: Beckett, Beyer, Coale. Third Row, left to right: Harting, Mead.*





**The Glee Club** gives collegiate concerts and an annual spring tour. *First Row, left to right:* Beckett, Johnson, Reinthaler, Wallace, Coale, Williams, Stone, Schwennesen, Roxby, Westney, Makin, Harrison, Kirby, Metcalf. *Second Row, left to right:* Candee, Beyer,

Wellborn, Geeter, Florian, Storms, Harting, Hill, Watson, Barkley, Hamblen, Nygard, Rebman, Blackman. *Third Row, left to right:* Kline, Brown, Mead, Burr, Skrit, Chew, Droulars, Marcus, Lipkind, Floriani, Cooper, Baker.



**Sigma Pi Sigma** is a national physics honorary society. *Bottom to top:* Knapp, Berger, Balko, McCord, Washburne, Miller.

**The Philosophy Club** holds discussion groups and presents noted lecturers. *First Row, left to right: Thomas, Berkowitz, Strammiello, Hill, Hoffman, Pedini. Second Row, left to right: Brackett, Feinschreiber, Kopper.*



**The Vestry governs the chapel. Left to right: Thomas, Minifie, Harris, Lee, Cool, Chang.**



**The Freshman Executive Council** is a coordinating body for the Freshman Class. *Seated, left to right: Mason, Davison, Williams. Second Row, left to right: Arcscott, Stone, Beck, Fidell, Morgan, Campbell. Third Row, left to right: Johnson, Sevin, Kadyk, Potterveld, Thomas, Kolb, Cooper, Garson.*





**The Trinity Band** is a marching and concert group. *First Row, left to right: Nardiello, Hallowell, Chew, Brackett, Bowie. Second Row, left to right: Barkley, Short, Wendell, Moroze, Maryak, Siegel, Cooper, Hartman, Bosch. Third Row, left to right: Files, Henrich, DeMone. Directing: Mr. Green.*

**The Newman Club** is composed of Roman Catholic students.  
*Left to right: Pastore, Ratches, DePietro, McNally, Elder, O'Brien, Querido, Ferrera.*







**Pi Gamma Mu** is a social science honorary society. *Base of Stairs, left to right: Shaw, Sweeney, Zakarian. Stairs, bottom to top: Gates, McNally, Ascher, Kelly, Nelson, Kapouch.*



**The Carilloneurs** play the thirty bell Plumb Memorial Carillon. *Left to right: Smith, Chapin, Thayer, Bowie.*

**The Spanish Club** presents films and lectures exercising that language. *First Row, left to right: Leonard, Gorden, Ferrera, Rushmore, White, Seibert. Second Row, left to right: Chappell, Ladewig.*

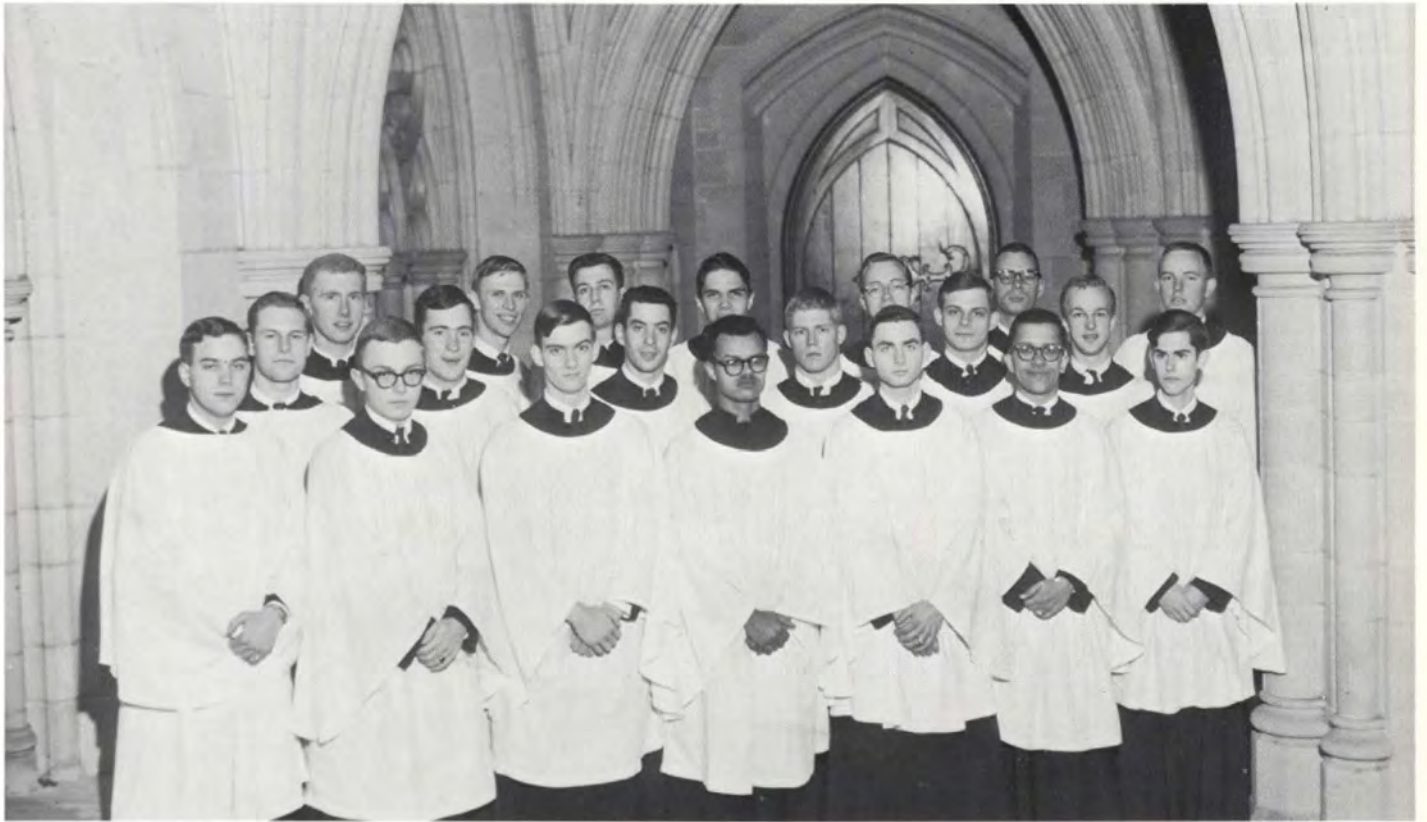


**The Senate** is the student legislative body. *First Row, left to right: Morgan, McNulty, Nelson, Waggett. Second Row, left to right: Lenicheck, Hill, Baker, Thayer, Taylor, Mitchell, Sweeney, Davison, Lutin, Pryor, Lee. Third Row, left to right: Miller, Sears, Norman, McKune, Schulenberg, Winner, Dominique, Kapouch, Zakarian, McCracken.*



**The Chamber Players** have revived recorder music for the twentieth century. *Left to right: Drate, Ward, Bowie, Dawson, Hall.*





**The Chapel Choir** leads the singing at Sunday services. *First Row, left to right: Stier, Bard, Correll, Smith, Heid, Bowie, Cimilluca. Second Row, left to right: Johns, Langlyke, Reinthaler, Jewett, Grenhart, Burfeind, Merriman. Third Row, left to right: Harned, DeMone, Richard, Ward, McCord, Jones.*



**WRTC-FM** provides entertainment for campus and community. *First Row, left to right:* Hall, Heid, Bragdon, Caruth, Richardson, Kelly, Todd, Metcalf, Crane, White. *Second Row, left to right:* Baran, Woodruff, Hill, McGill,

Wadlow, Blumberg, Case, Elder, Haslach, Cantor, Hopkins, Bernstein, St. Clair, Wiltbank. *Third Row, left to right:* Bohn, Lutin, Bosch, Miller, Geetter, Hartman, Kelly, Silverman, Petersen, Gold, Pleva, Benjamin, Knapp.

**The Pipes and Drums** is a student band dressing and playing in authentic highland tradition. *Left to right: Grant, Hussey, Dunn, Pratt, Bailey, Stribling, Bartol, Mott.*





**The Psychology Club** promotes the id. *Left to right: McNally, Cool, Heldt, Watt, Cummings.*



**The Trinity Tripod** is a bi-weekly that covers campus and national events. *First Row, left to right: Chatfield, Rosenthal, Spencer, Niles, Cotta, Blume, Reese, Benjamin. Second Row, left to right: Fidel, Miller, Cantor, Feinschreiber, Hopkins, Witherington, Dalzell, O'Neill, Rowan, Crane.*



**The Intramural Board** is the coordinating group for campus athletic competition. *Left to right:* Syer, Adelstein, Klotz, Ewing, Masius.



**The Cercle Francais** provides activities for the individual interested in the language. *First Row, left to right: Dr. Naylor, Roxby, Miele, Intagliata, Casson, Marshall, Miller, Pastore, Markovich, Chapin, Kirby, McNally, Correll. Second Row, left to right: Hall, Broudy, Droulras, Friedman, Lipkind, Ferrera, Blumberg, deVou, Boultee, Heldt.*





**The Jesters** is the student dramatic organization. *First Row, left to right: McIver, Lloyd, Maurice, Bennett. Second Row, left to right: O'Brien, Kaufman, Fish, Coryell. Third Row, left to right: Childs, Vickery, DeMone, Cool, Jay, Frier, Drate, Hawthorne, Liebowitz. Fourth Row, left to right: Spitzer, Bunnell, Bowie, Ward, Dawson, Cimilluca, Nardiello, Tuttle, Strammiello, Gardner, Woolsey, Hall, Basch, Gann.*

**The Chapel Cabinet** represents the major faiths of the students in Chapel activities. *Left to right:* Ferrera, Chang, O'Brien, Blumberg, Rudnick, Files.





**The Archive** is a scholarly journal for student essays. *Left to right:* LaRocca, Tiefenbrun, Drate, Harrison, Tucker, Mosher, Streisand, McNally, Sullivan, Zakarian, Raymond.



**Who's Who** is an honorary group of distinguished students. *First Row, left to right: Polk, Renza, Cool, Nelson, Kelly, Gates, Leahy. Second Row, left to right: McNulty, Cromwell, Sears, Anderson, Kapouch, Richardson.*





**The Cerberus** is an honor society whose members are hosts for the college. *Bottom, left to right: Waggett, Marcuss, Keen. Stairs, bottom to top: Stanley, Fish, Brackett, Freeman, Koch, Wright, McKune, Schulenberg, Reynolds, Voorhees, Pyle, Gregory, Wardlaw, Hill, Taylor, Watson, Miller.*

**Phi Beta Kappa.** *Left to right:* Stetler, Browne, McNally, Kapouch, Nelson, Shaw, Wilson, Polk, Gates, Lutin, LaRocca.



**The Mather Hall Board of Governors** assists in the operation of Mather Hall. Seated, left to right: Baker, Hill, LaRocca. Standing, left to right: Lee, Hunt, Tower, Davison.



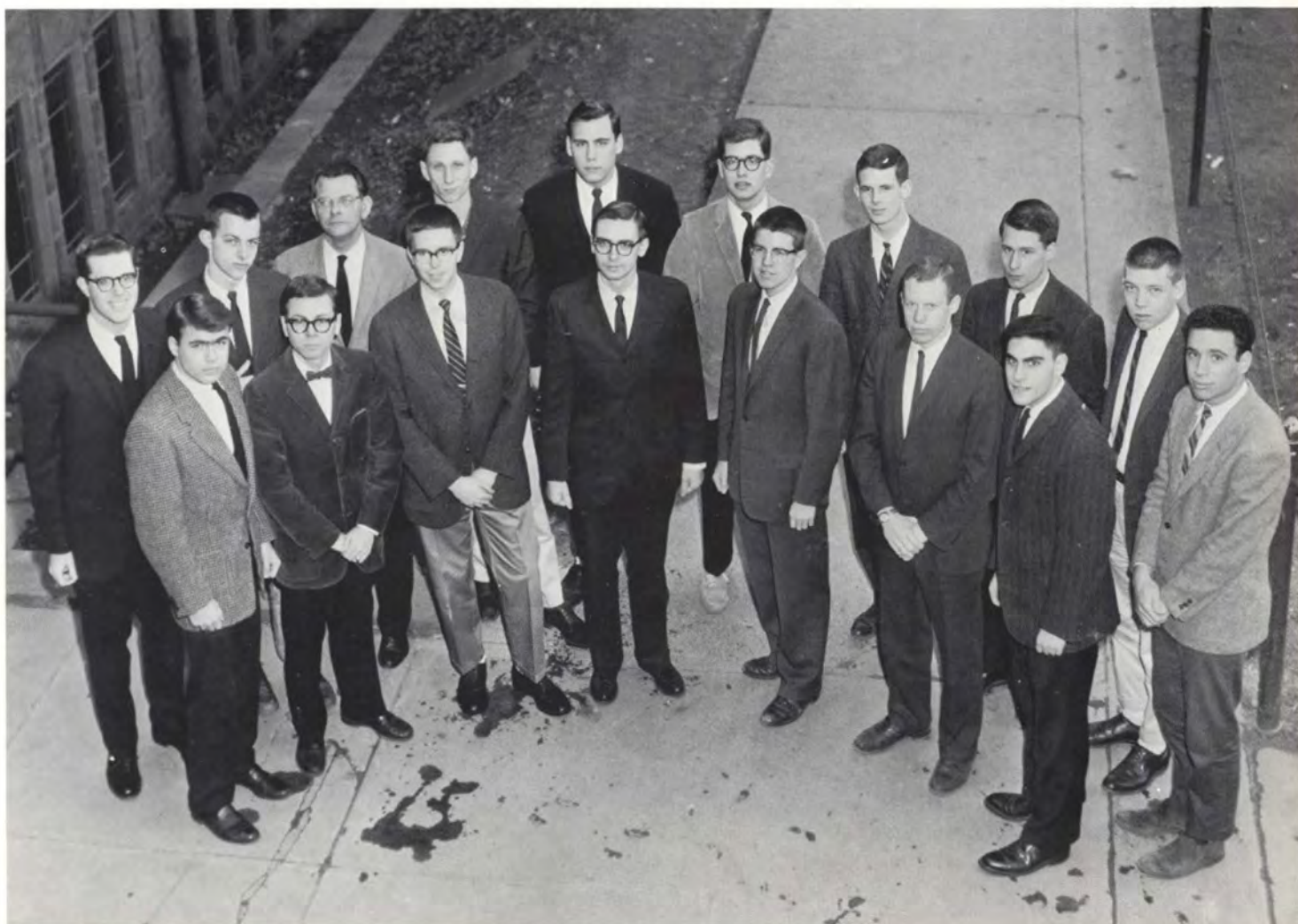


**Delta Phi Alpha** is the national German honorary fraternity. *Left to right:* Hall, Bylin, Langlykke, McCord, McGawn, Orr, Dr. Hansen.

**The Campus Chest** is a campus fund-raising group for the annual Community Chest. *Left to right:* Alberts, Mason, Winter, Day, MacLeod, Knox, Jones.



**The Athenaeum Society** competes in intercollegiate and campus debates. *First Row, left to right: Davison, Sweeney, Wendell, Nelson, Berger, Gregory. Second Row, left to right: Kapouch, Churchman, Mr. Neaverson, Ehart, Thomas, Nickerson, Frier, Herkness, Rushmore, Moroze.*





**The Trinidads** is a newly formed and highly successful singing group. *Front, left to right: Fields, Trickett, Campbell. Back, left to right: Raff, Parlee, Millbank, Minifie, Schilpp, Hoerr, Niven, Oldershaw, Ward.*

**Psi Chi** is a national psychology honor society. *Kneeling, left to right: McNally, Lee, Metcalf, Cool, LaMotte. Standing, left to right: Dr. Langhorne, Raymond, Wiener, Kraut, Blackwell, Adams, Shechtman, Dr. Meade.*







**The Cheerleaders** aggravate enthusiasm at football games. *Left to right:* Niles, Barnard, Hevner, Tuttle, Sanke, Anderson.

**AFROTC.**

"The main reason for the Air Force's pursuit of intellect on the Trinity Campus is its new mission. The accomplishment requires not only the utilization of scientists but also the intellectual who is capable of developing and employing the philosophy and doctrine of this new Air Force."





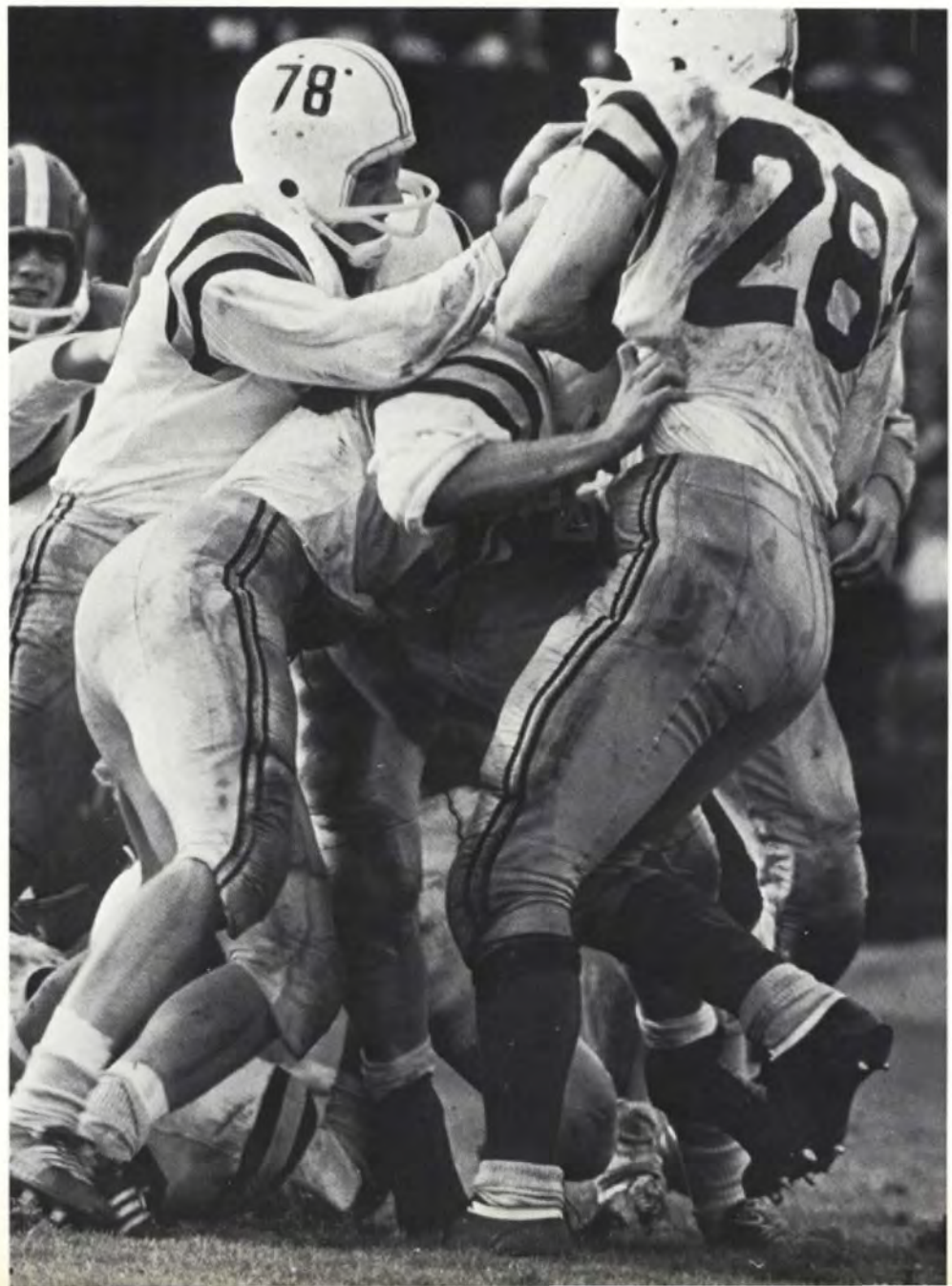
**AFROTC Rifle Team.** *First Row, left to right:* Sidor, Hoff, Pay, DePietro, Talbert. *Second Row, left to right:* Fichman, Wenger, Randmaa, Campbell, Spencer, Born.





*Sports*

*Trained reactions contort bodies pushed to extremes by desires for a score, as reflexes react in time to complete the minor movements of the greater whole.*





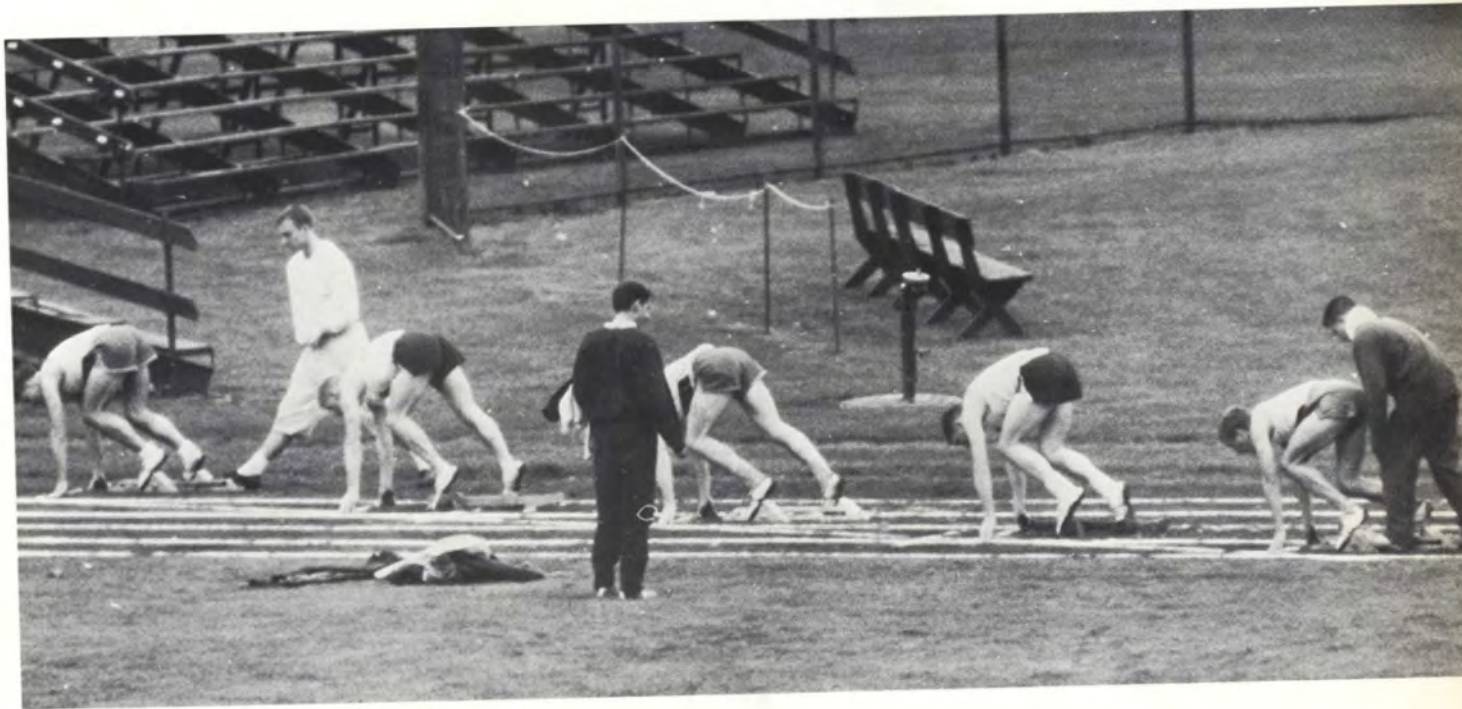
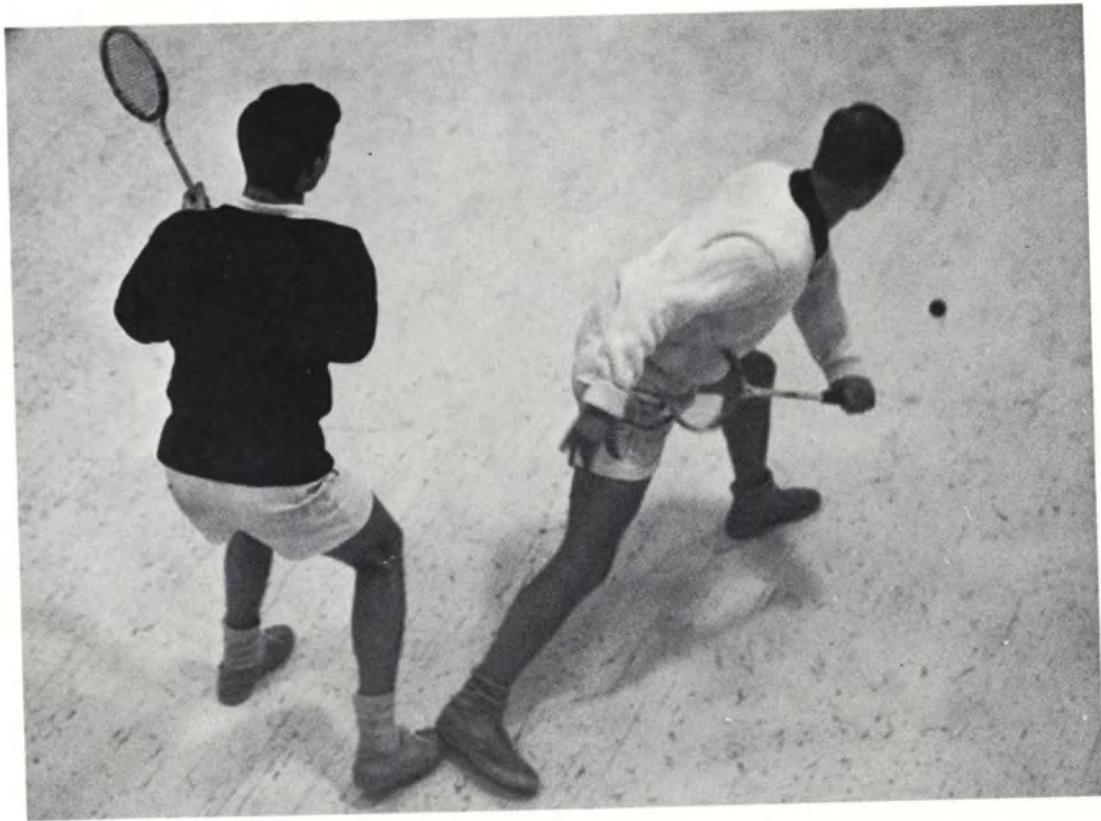


*For the game has begun with a vengeful  
crack promising tortured strife colored by  
uniforms soon to be sweated grey and  
forced out of recognizable form.*









*Individuals strain to blend with the whole, forcing stubborn limbs toward unwilling perfection that is never reached yet is blistered and bled for.*







*The contest continues and letting up is not allowed for either player or officials as penalties are metered out and momentary gains revive sagging backs and legs.*











*And finally the concluding scene is acted out  
before a tired audience more seeped in worry  
than the mindless players whose reactions  
are now but instinct.*







# SOCCER



First Row, left to right: McQuaid, Melrose, Hill, Jacobs, Mills, Rianhard, Jones. Second Row, left to right: Schectman, Palmer, Sherin, Leddy, Anderson, Morgan, Smith, Raymond, Tomkins, Bordogna. Third Row, left to right:

Anderson, Brasfield, Plass, Thomases, Jones, Synn, Wood, Pitcairn, deVou, Sheley, Feshler, Rimer, Fairbanks, Brittain, Dath.

	Trinity	Opponent
M. I. T. ....	0	2
University of Massachusetts .....	3	0
Tufts .....	3	1
University of Hartford .....	7	0
Williams .....	1	0
Union .....	2	1
Amherst .....	0	4
Coast Guard .....	5	2
Wesleyan .....	1	4

Coach: Dath

Co-Captains: Anderson & Morgan

# GOLF



First Row, left to right: Ebersold, Traut, Dunkle, Zimmerman.

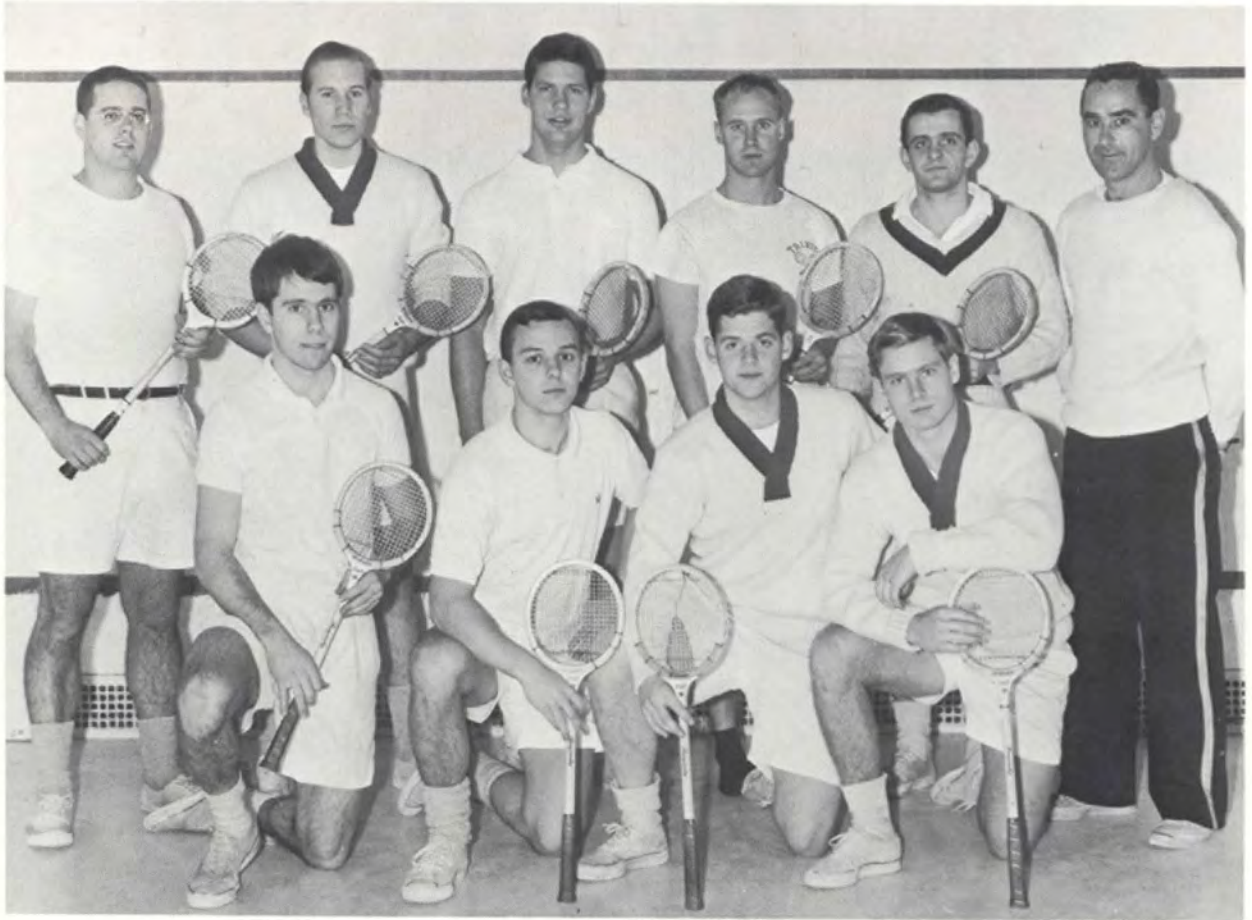
Second Row, left to right: Tompkins, Moyer, Scully, Pappas.

	Trinity	Opponent
Worcester Tech .....	1	6
Williams, M. I. T., Colby .....	0-7, 1-6, 2-5	
Amherst .....	2	5
Rhode Island .....	2½	4½
Wesleyan .....	0	7
University of Massachusetts .....	4	3

Coach: Pappas

Captain: Dunkle

# SQUASH



First Row, left to right: Leddy, Hemphill, Day, Crosby.

Second Row, left to right: Steinmuller, Raeder, Bennett, Pope, Mills, Dath.

	Trinity	Opponent
Navy .....	1	8
Amherst .....	1	8
Wesleyan .....	4	5
Williams .....	2	7
Yale .....	0	9
M. I. T. ....	1	8
Amherst .....	1	8
Army .....	1	8
Wesleyan .....	4	5

Coach: Dath

Captain: Mills

# CROSS COUNTRY



Kneeling, left to right: Gregory, Losse, McGawn, Riley, Bois, Casson. Standing, left to right: Smith, Wallace, Syer, Clas-

sen, Maurice, Gardner, Long, Chapin.

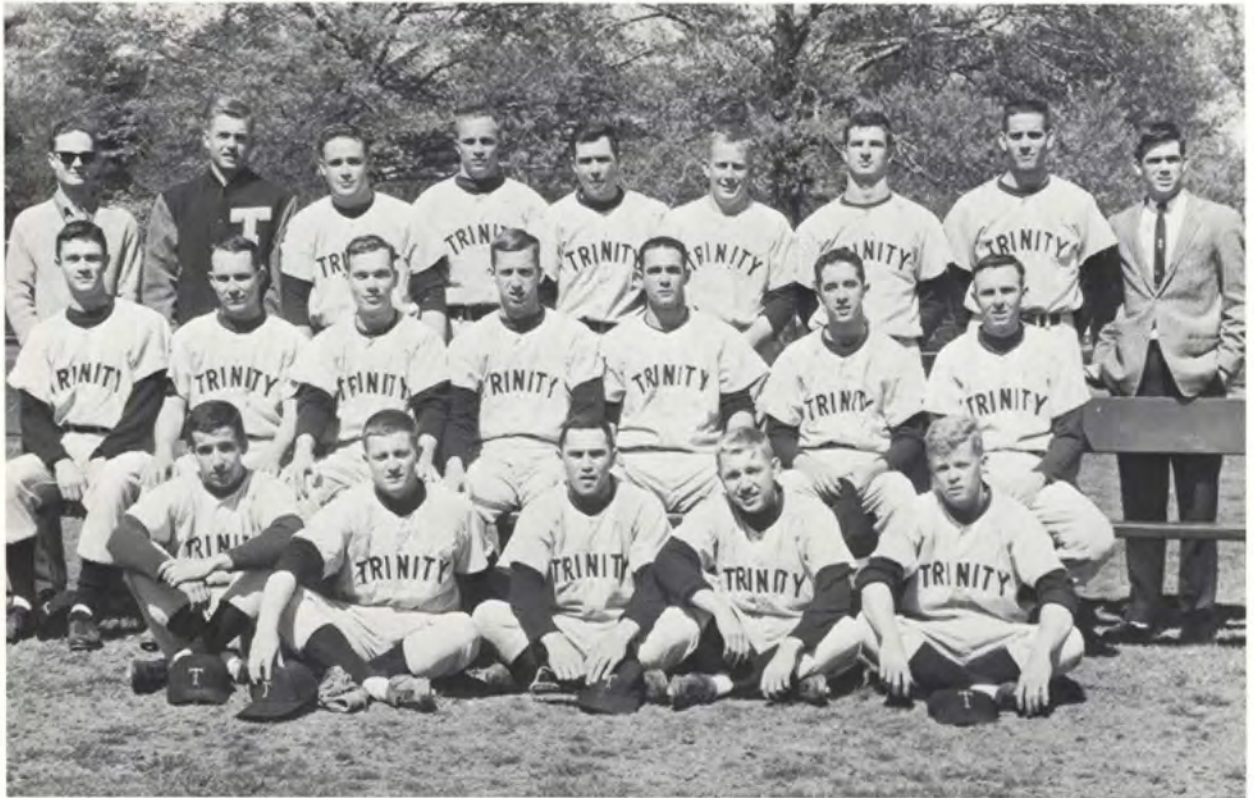
	Trinity	Opponent
Central Conn. State .....	30	25
Avon Old Farms .....	27	28
Manchester H. S. ....	43	20
Central Conn. State .....	51	15
Amherst, Worcester Tech .....	71	37, 28
Avon Old Farms, Conard H. S. ....	60	34, 31

Coach: Smith

Captain: McGawn



# BASEBALL



First Row, left to right: Landerman, Halloran, Calabrese, Raymond, Voorhees. Second Row, left to right: Alhgren, Polk, Johnson, Woodruff, Feshler, McNeill, Shults. Third Row, left to right:

Repetto, Anderson, Leahy, Pitcairn, MacDougall, Towle, Deneault, Winner, Watson.

	Trinity	Opponent
University of Delaware .....	12	7
George Washington .....	4	6
Columbia .....	3	5
Yale .....	5	3
Springfield .....	6	1
American International College .....	6	2
Amherst .....	0	2
Wesleyan .....	3	6
Bowdoin .....	10	1
Coast Guard .....	12	2
Wesleyan .....	5	4
Worcester Tech .....	3	2
Williams .....	4	0
Middlebury .....	4	2
University of Massachusetts .....	1	5

Captain: Shultz

Captain: Johnson

# SWIMMING



First Row, left to right: Shortell, Ewing, Hevner, Bundy, McCracken, McLagan, Burton, Goodman. Second Row, left to right: Slaughter, Lockton, Gooden,

Smith, Hutzler, McNeill, Creighton, Ashworth, Raymond, Sankey, Koretz.

	Trinity	Opponent
Tufts .....	58	37
Coast Guard .....	56	39
W. P. I. ....	54	41
Springfield .....	36	59
Bowdoin .....	35	60
M. I. T. ....	36	59
R. P. I. ....	60	34
Amherst .....	58	37
Union .....	49	46
Wesleyan .....	64	30

Coach: Slaughter

Captain: Bundy

# FOOTBALL



*First Row, left to right: Wardlaw, Deneault, McKune, Nelson, Parsons, Silver, Calabrese, Oulundsen, Schaefer, Pabich, MacDougall, Chatfield. Second Row, left to right: Drynan, Schulenberg, Howland, Winner, Guiliano, Babin, Bennett, Cromwell, Polk, Whitters, Smith, Taylor, Szumczyk, Stetson, Repetto.*

*Third Row, left to right: Sticka, Jessee, Wentworth, Campbell, Lintz, Waggett, Avery, Stowell, Haring, Lundborg, Fiordalis, Kadlic, Marmesh, McWilliams Slaughter.*

	Trinity	Opponent
Williams .....	8	6
St. Lawrence .....	14	14
Tufts .....	14	6
Colby .....	23	16
Franklin & Marshal .....	26	0
Coast Guard .....	12	20
Amherst .....	8	22
Wesleyan .....	42	14

Coach: Jessee

Captain: Cromwell

# TENNIS



First Row, left to right: Alvord, Morris, Stevens, Leddy. Second

Row, left to right: Wallace, Miller, Pitman, Bennett, Mills, Dath.

	Trinity	Opponent
Rhode Island .....	5	4
Union .....	8	1
Amherst .....	1	8
Worcester Tech .....	7	2
Holy Cross .....	7	2
Wesleyan .....	3	6
M. I. T. ....	1	8
Springfield .....	8	1

Coach: Dath

Captain: Mills

# TRACK



First Row, left to right: Long, Syer, Smith, McCracken, Hunt. Second Row, left to right: Wiltbank, Keen, Maryak, Classen, Moore, Wardlaw, Rianhard, Smith. Third Row, left to right: Kriteaman, McGawn, Smith,

Brackett, Hoerr, Miller, Schulenberg, Riley, Wood, Kurth. Fourth Row, left to right: Daley, Galaty, Campbell, Schilpp, Chandor, Pabich, Brackett, Ferguson.

	Trinity	Opponent
Wesleyan .....	53 2/3	55 1/3
Coast Guard .....	77 1/6	48 5/6
Union .....	83	43
Middlebury .....	90	36
Vermont .....	71 1/2	54 1/2
Worcester Tech .....	68	57
Amherst .....	81	45

Coch: Kurth

Captain: Smith

Robert S. Morris Outstanding Track Award: Smith

# CREW



Kneeling; Lockton. Standing, left to right: Meyer, Morgan, Bundy, Roberts, Helander, Lloyd, Boyd, Wagner, Reynolds.

	Trinity	Opponent
Drexel .....	6:55	6:51
St. John's .....	7:17	7:29
Iona, Clark .....	Won	Lost
Won Rusty Callow Regatta		
Third in Dad Vail Regatta		

# BASKETBALL



First Row, left to right: Yates, Voorhees, Norman, Brewster, Keen. Second Row, left to right: Vickery, McKune, Scully,

Leghorn, Brandenberger, Fenrich, Brooks, McWilliams.

	Trinity	Opponent
M. I. T. ....	70	60
Kings Point .....	87	68
Worcester Tech .....	67	58
Williams .....	66	84
Coast Guard .....	69	62
Clark .....	80	69
Tufts .....	81	79
Wesleyan .....	75	71
M. I. T. ....	65	74
Union .....	76	64
Amherst .....	69	80
Bowdoin .....	76	59
Rochester .....	64	88
Colby .....	61	72
Wesleyan .....	66	79
Coast Guard .....	76	56
Brandeis .....	72	88
Middlebury .....	97	72

Coach: McWilliams

Captain: Norman

# HOCKEY



*Kneeling, left to right: Dunkle, Williams, Twining, Polk, Freeman. Standing, left to right: Lloyd, Cutler, Barker, Kane, Pitman, Mott.*

	Trinity	Opponent
Amherst .....	4	3
Croquet Club .....	2	6
Wesleyan .....	3	4
Brown Frosh .....	0	9

Coach: Hargrove

Captain: Cutler



# FENCING



First Row, left to right: Drate, Stewart, Chase, Yeaton. Second Row, left to right: Rand, Johnson, Talley, Pratt, Chang, Shaler.

	Trinity	Opponent
Post .....	18	9
Pace .....	14	13
M. I. T. ....	15	12
Brooklyn College .....	11	16
Holy Cross .....	23	4
Harvard, Brandeis .....	10, 21	17, 6
Stevens .....	16	11

Coach: Shailer

Co-Captains: Chase & Stewart



ADVERTISEMENTS



**HELPFUL NEIGHBORLY BANKING**

*SINCE 1792*

**Hartford National Bank**

**and Trust Company**

*Established 1792*

*Member F. D. I. C.*

24 convenient locations throughout Connecticut

**DELTA PHI**  
**(Sigma Chapter)**

*extends its congratulations*

*to*

**THE CLASS OF 1962**

**The HARVEY & LEWIS Co.**

*GUILD OPTICIANS*

Contact Lenses

Photographic Dept.

56 Pearl St.

85 Jefferson St.

**MAKRIS DINER**

1795 BERLIN TURNPIKE, ROUTE 5 — 15

WETHERSFIELD, CONNECTICUT

*OPEN 24 HRS. A DAY*

**PAUL R. AuCOIN**

*JEWELER*

318 ASYLUM ST. (Hotel Bond)

HARTFORD, CONNECTICUT

Telephone: CHapel 7-3356

*Compliments of*

**THE BROOKSIDE**  
**RESTAURANT**

442 NEW BRITAIN AVENUE

HARTFORD, CONNECTICUT

Business: JAcKson 7-9644

**MARION'S LUNCHEONETTE**

DELICATESSEN • CATERING

*Just over the Rocks*

243 ZION STREET

HARTFORD, CONN.



*One plan, one man, one monthly check to pay . . .  
under The Travelers umbrella of insurance protection.*

**THE TRAVELERS Insurance Companies**

HARTFORD 15, CONNECTICUT

---

**THE  
PHILIP H. STEVENS  
COMPANY**

Registered Jewelers  
American Gem Society

65 PRATT STREET  
HARTFORD

—Branch Store—

60 LaSALLE ROAD  
WEST HARTFORD CENTER

*Compliments of*

**NEW YORK  
MEAT PRODUCTS, INC.**

48 EDWARD STREET  
HARTFORD, CONNECTICUT

Wholesale Meats —

BEEF, PORK, LAMB, VEAL

## ALPHA CHI RHO

*extends its congratulations*

to

THE CLASS OF 1962

*Henry Miller*

24-26 TRUMBULL STREET  
HARTFORD, CONNECTICUT

Telephone: JA 5-2139

*Clothiers — IMPORTERS — Furnishers*

## THE HEARTHSTONE

680 MAPLE AVENUE

HARTFORD, CONNECTICUT

*Open Kitchen*

*Charcoal Broiler*

*Steaks - Large Lobsters - Game Hens*

CH 6-8075

## COLLEGE VIEW TAVERN

*Where the Men of Trinity meet*

*for the finest draught beer in town*

215 ZION STREET

HARTFORD, CONNECTICUT

## BLAIKIE MILLER & HINES, INC.

*Food service management and consultants*

*with offices in*

ATLANTA 3, GA.  
C & S Bank Building  
Broad & Marietta Sts.  
52-4-3466

NEW YORK 22, N. Y.  
527 Madison Ave.  
TEmpleton 8-5440

UTICA, N. Y.  
124 Lyons Place  
RE 5-1506

HARTFORD, CONN.  
998 Farmington Ave.  
West Hartford, Conn.  
ADams 6-5661

## MASON CONTRACTORS

for Trinity College

Campus Housing

## FILLORAM CONSTRUCTION CO., INC.

983 MAIN STREET

MANCHESTER

MI 3-2457

# THE TRINITY COLLEGE BOOKSTORE

CONGRATULATES  
THE CLASS OF 1962  
AND WELCOMES  
THE CLASS OF 1966

THE HARGROVES

## THE BROASTERANT

Corner PARK n' BROAD  
HARTFORD

TAKE OUT      EAT IN

*Catering*

Delivery Call — CH 7-2121

(Free Delivery to Trinity Campus)

*"Clothiers To Trinity Men*

*Since 1904"*

**SLOSSBERG'S**  
INC.



1317 BROAD STREET      HARTFORD, CONNECTICUT

*Compliments of*

## TRINITY DRUG CO.

1284 BROAD STREET

HARTFORD, CONNECTICUT

## TRACY, ROBINSON & WILLIAMS CO.

*Industrial Supplies*

110 AIRPORT ROAD

HARTFORD, CONN.

JA 2-7211

## TRINITY CAMPUS LAUNDRY

BASEMENT OF COOK DORMITORY

*Attended*

Monday thru Friday, 12 to 5 p.m.

*Self-Service*

Monday thru Friday, 5 to 11 p.m.

Saturday and Sunday, All day to 10 p.m.

*Stop at*

## HOWARD JOHNSON

RESTAURANT

and

COCKTAIL LOUNGE

831 FARMINGTON AVENUE

WEST HARTFORD

. . . supplement your education

every day with the informative, entertaining  
and superior news reporting of



---

# RIVERSIDE TRUST COMPANY

90 PEARL STREET

HARTFORD, CONN.

PORTLAND — NEW HARTFORD — ESSEX — OLD LYME — BROAD BROOK  
CONNECTICUT

*Member Federal Reserve System  
Member Federal Deposit Insurance Corporation*

---



## HUNTER PRESS, INC.

1841 BROAD STREET  
HARTFORD 6, CONNECTICUT

LETTERPRESS and OFFSET

---

COMPLETE  
BINDERY FACILITIES

ADDRESSING                      PLASTIC BINDING

CAMERA and ART DEPARTMENT

CH 9-0624



22 TRUMBULL STREET

Next to Henry Miller

IVY LEAGUE FOOTWEAR

## AMERICAN COAL CO.

170 PEARL STREET, HARTFORD

Phone JA 2-8151

A-C FILTERED FUEL OIL  
HEATING EQUIPMENT and SERVICE!

BLUE COAL

KOPPERS COKE

*Distributors for*

CITIES SERVICE

*Gasoline, Oil and Automotive Service*



## TRINITY SERVICENTER

ROAD SERVICE

*Complete automobile repairing service*

Open: 7 A.M. — Midnight

Sundays: 8 A.M. — Midnight

*Free Pick-up and Delivery*

*Free Road Service for Students*

405 WASHINGTON STREET  
(Corner Brownell Ave.)

HARTFORD, CONN.

## TRINITY BARBER SHOP

WE SPECIALIZE IN  
COLLEGIATE HAIRCUTS

*"Across the Rocks"*

209 ZION STREET

## NATIONAL TYPEWRITER CO., INC.

OLYMPIA TYPEWRITER DEALER

*Sales — Rentals — Repairs*  
on all makes of

*Typewriters, Duplicators, Adding Machines*  
*and Checkwriters*

*Duplicators and Office Supplies*

Special Rental Rates to Students

247 Asylum St.      JA 7-1115      Hartford, Conn.

## THE WASHINGTON DINER

175 WASHINGTON AVENUE

*Good Food — Good Service*  
try our dining room for the best in both

FREE PARKING

CH 7-6272

## SEYMOUR AUTO STORES

AUTO PARTS AT DISCOUNTS

SHERWIN-WILLIAMS PAINTS

HARDWARE — PLUMBING SUPPLIES

489 Park Street

CH. 7-9876

*Open Evenings*



## your move



... just a word from you, and we'll show you how our Protected College Expense Plan makes it far easier to meet today's tuition costs and other expenses of higher education. Take up to six years to repay. Life insurance is available to assure completion of education.

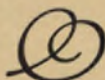
### **The Connecticut Bank AND TRUST COMPANY**

30 Offices . . . serving 21 Connecticut Communities

## BENT & BENT, INC.

436 FARMINGTON AVENUE

HARTFORD, CONNECTICUT



## WHITE SWAN MOTEL

FREE TV

*Comfortable Accommodations*

SPECIAL TRINITY RATES!

Across From Chinese Hitching Post

2½ Miles South on Berlin Turnpike

BE MERRY, BE GAY

EAT

DRINK

PLAY



371 TRUMBULL STREET  
HARTFORD, CONN.  
JA. 7-5454

EVERYBODY

LAUGHS and SINGS

DANCES and SWINGS

---

**ST. ANTHONY HALL**

*extends its best wishes*

to

THE CLASS OF 1962

*Compliments of*

**A F R I E N D**

---

**THE TOBACCO SHOP**

*Complete Smokers' Supplies*

31 PEARL STREET

HARTFORD, CONNECTICUT

**JACOBS PAINT STORE**

*Dutch Boy Paints*

*Interlux Marine Paints*

134 PARK ROAD

WEST HARTFORD, CONNECTICUT

Telephone: AD 6-2501

---

**LIBBY & BLINN, INC.**

135 SHELDON STREET

HARTFORD, CONNECTICUT

*Heating — Ventilating — Air-Conditioning  
Contractors*

"THE SPIRIT of '76"

**THETA XI FRATERNITY**



**KENNY'S MOBILE SERVICE STATION**

234 WASHINGTON STREET

HARTFORD, CONNECTICUT

Phone: JAckson 7-5801

**METCALFE GLASS CO.**

*for*

Auto Glass — Picture Frames — Mirrors

287 PARK STREET

JA 7-5273

*Trinity Students' Favorite Barber Shop*

**T O M M Y ' S**

105 NEW BRITAIN AVENUE

(near corner of Broad Street)

*Compliments to*

THE CLASS OF 1962

*from the*

**C & N AUTO SERVICE**

*Compliments of*

**SWIFT'S COAT, APRON & TOWEL  
SUPPLY, INC.**

490 WETHERSFIELD AVENUE

HARTFORD, CONNECTICUT

**DILLON MAILING BUREAU**

*Complete Letter Shop Service*

250 PEARL STREET

HARTFORD, CONN.

Telephone JAckson 7-5121

OUR HONORS

- 3 *The Caldecott Winner for 1958 (5th time) and two of the three runners-up.*
- 3 *Selections in the 9th Lithographic Awards Competition & Exhibit.*
- 5 *Of the Best 10 Children's Books of the Year selected by the N.Y. Times.*
- 7 *Of the Best 50 Books of the Year selected by the A.I.G.A.*
- 15 *Of the Best 42 Children's Books of the Year selected by the N.Y. Herald Tribune.*

**Connecticut Printers, *Incorporated***

CASE, LOCKWOOD & BRAINARD, *Letterpress Division* • KELLOGG & BULKELEY, *Lithographic Division*  
HARTFORD 1 • CONNECTICUT

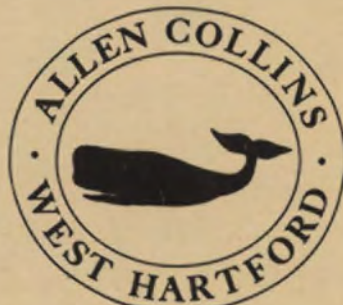
Compliments of

**THE HOTEL BOND**

338 ASYLUM STREET

**SILLITER-HOLDEN, INC.**

Industrial Supplies



MEN'S CLOTHING AND FURNISHINGS

43 South Main Street

ADams 6-1647

433 NEW PARK AVENUE

Hartford 1, Connecticut

## SMITH and FAZZINA

*Wholesale*

*Meats, Poultry, Provisions*

Purveyors to Restaurants

Hotels and Inns

526 TRUMBULL STREET

HARTFORD, CONNECTICUT

Phone CH 9-7731

The Favorite Dining Spot

Of Trinity Men

## ÆTNA DINER

267 FARMINGTON AVENUE

*visit the Peacock Lounge*

## WARD DECORATING

*extends its compliments*

*to*

THE CLASS OF 1962

*Compliments of*

**A F R I E N D**

# VALCO

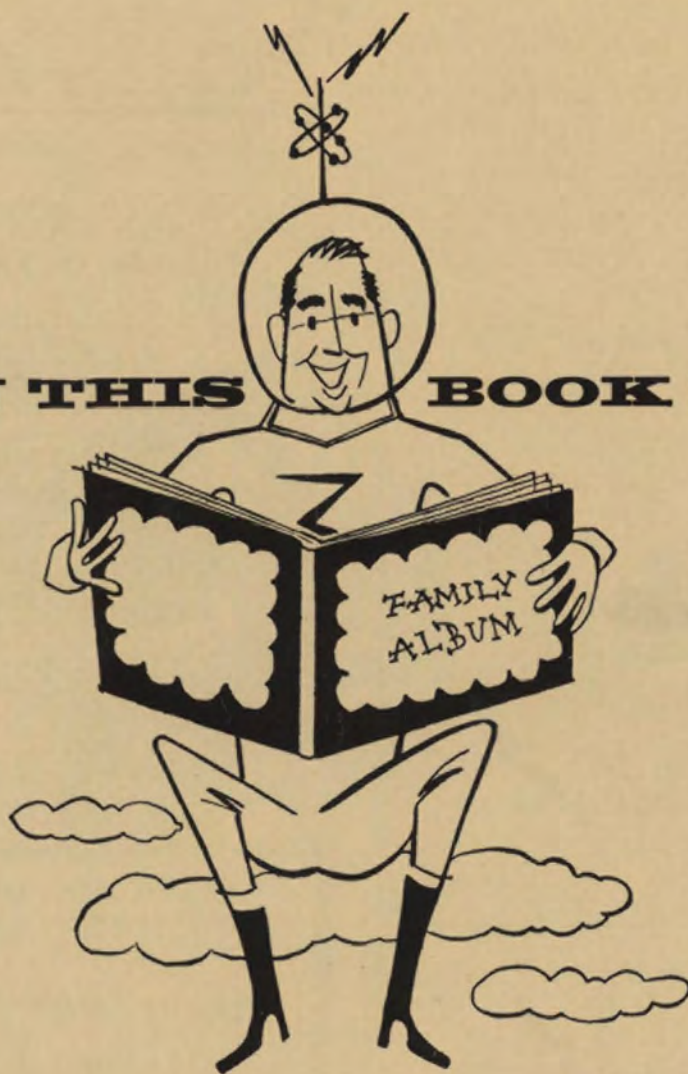


MACHINE CO. . . . .

470 COTTAGE GROVE RD.  
BLOOMFIELD, CONN.  
TEL. HTFD. CHAPEL 2-7731

Manufacturers of Precision Parts for Aircraft and Electronic Components

**OPEN THIS BOOK IN 1999**



• • • and won't it be *your photograph* that you and your grandchildren look for first?

That's a lot of looking ahead, but it illustrates the permanence...  
the interest...of a fine photograph. Fine photographs of you are our concern  
...a photograph you will proudly give as a personal  
present...a photograph you will look back on happily years from now.

We hope that when you want a fine photograph taken again,  
you entrust it-to us—*your official school photographer.*

PHOTO REFLEX STUDIO, FIFTH FLOOR

center of Connecticut living since 1847

**G. FOX & CO.**  
HARTFORD • CONNECTICUT

Bakers for

TRINITY COLLEGE

**BESS EATON  
DONUT CO.**

876 NEW BRITAIN AVENUE

HARTFORD, CONNECTICUT

921 FARMINGTON AVENUE

WEST HARTFORD, CONNECTICUT

---

**FRIENDLY ICE CREAM SHOP**

*just a half mile south of the campus*

at BROAD ST. & MAPLE AVENUE

We feature delicious sandwiches

and ice cream specialities.

**The Arrow Bus Lines**

NEW HIGHWAY TRAVELER TYPE COACHES

"AIR RIDE"

PULLMAN OF THE HIGHWAY



FOR ALL OCCASIONS - ANY TIME - ANYWHERE  
KEEP YOUR PARTY TOGETHER

**For Charter Service Call BUTler 9-1531**

70 FLORENCE ST., EAST HARTFORD

THE ONLY DIRECT AND SHORTEST ROUTE TO

ALBANY • PITTSFIELD • LENOX • STOCKBRIDGE • GREAT  
BARRINGTON • NORFOLK • CANAAN • CONN. UNIVER-  
SITY, STORRS, CONN. . . . *All Points North & West Out  
Of Albany & Pittsfield*

*Serving Intermediate Points . . .*

RIDE  
THE  
ARROW  
LINE

SAFETY • DEPENDABILITY • COMFORT • COURTESY  
**TERMINAL & TICKET INFORMATION**

**CALL JACKSON 5-7306**

201 ALLYN ST. (COR. UNION PL. & ALLYN ST. DIRECTLY  
ACROSS FROM R.R. STATION)

# CHARLES E. THENEBE & ASSOCIATES

INVESTMENT PLANNING

Telephone Service: 24 hours daily, 7 days weekly

36 PEARL STREET

HARTFORD 3, CONN.

Hartford—phone CHapel 6-5613

New York—phone HAnover 2-4120



**MEN'S WEAR**

102 ASYLUM ST., HARTFORD

*Compliments to*

THE CLASS OF '62

**ALPHA DELTA PHI**

**ACE HARDWARE CO.**

394 NEW BRITAIN AVENUE

HARTFORD, CONNECTICUT

Phone: CH 7-7904

*Special Discounts to Trinity Students*

*Prompt Delivery Service*

**L. L. ENSWORTH  
& SON, INC.**

*Industrial Supplies and*

*Steel Distributors*

270 LOCUST STREET

HARTFORD 14, CON.

Telephone: CHapel 9-7791



# THE LINCOLN DAIRY CO.

BETTER MILK, CREAM and ICE CREAM

*Visit Your Neighborhood*

LINCOLN DAIRY ICE CREAM BARS

MAIN OFFICE & PLANT

1030 NEW BRITAIN AVENUE

WEST HARTFORD, CONN.

*Compliments of*

**GAZETTE-NEWS PRESS**

EAST HARTFORD, CONNECTICUT

*Compliments of*

**NEIDITZ BROTHERS**

*contract furniture*

500 FARMINGTON AVENUE

HARTFORD, CONNECTICUT

*Member of the*

National Arborist Association

**WALGREN  
TREE EXPERTS, INC.**

HARTFORD — NEW HAVEN

Arborists for Trinity College

**MONTANO BROS., INC.**

*Metal Furring and Lathing*

*Plain, Ornamental and Acoustical Plastering*

25 EDGEWOOD STREET

HARTFORD 12, CONN.

CH 7-8863

# THE HARTFORD MOTEL

ON WILBUR CROSS PARKWAY — U.S. 5 & 15

*one mile south of Hartford*

102 ROOMS

Phone JACKson 9-5618

---

## OTTO EPSTEIN, Inc.

SANITARY ENGINEERS and CONTRACTORS

FORTY ELM STREET

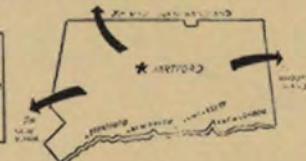
HARTFORD, CONNECTICUT

---

### *The Short Line*

---

OF CONNECTICUT, INC.  
FIRST IN MOTOR BUS AND CHARTER SERVICE



*For the Foremost in . . .*

**SERVICE • COURTESY • RATES**

**CHARTER A SHORT LINE BUS!**

Keep Your Group Together in Buses with Reclining Seats  
Anywhere - Anytime Across The State Or The Nation  
Bus Trips To Any Historic Area In Connecticut,  
New England Or New York

*Special Consideration Given to School Children*

**FOR CHARTER SERVICE TEL. BU 9-3651**

**12 JAMES ST. • EAST HARTFORD**

Frequent Daily Bus Service from Hartford to Windsor Locks  
Thompsonville • Springfield • Holyoke • Northampton  
Colchester • Norwich • New London (Ocean Beach • Meriden  
Wallingford • New Haven • Misquamicut Beach  
Rocky Neck State Park

**EXPRESS that Small Package By Bus!**

**TERMINALS**

JA 7-2181  
77 Union Place

JA 5-2113  
201 Allyn St.

---

## C. H. DRESSER & SON, INC.

*Specialists in*

Architectural Woodworking

Since 1880

HARTFORD 14, CONN.

Compliments of

**THE POTLACH  
RESTAURANT**

1200 WILBUR CROSS HIGHWAY



Central Air Conditioning  
Radio — Television — Muzak

**TOWNE HOUSE MOTOR MOTEL**

BERLIN TURNPIKE

JA 9-8226

96 DeLuxe Units

**LANDERMAN ORCHESTRA**

HARTFORD, CONNECTICUT



Here's Entertainment that's  
**NEW!**  
*Different! Dynamic!*

**RISK!**<sup>®</sup>

*Parker Brothers' trade-mark  
for its continental game equipment*

You'll find this outstanding new game has every ingredient for complete, fascinating entertainment: it's original, suspenseful, tremendous in scope; it's a game of strategy and chance with the whole world your theatre of operations. With its colorful playing board, and over 450 playing pieces, RISK is a superb game that will give you endless hours of fun and relaxation. For 3 to 6 players. \$7.50



*Another*  
**FAMOUS PARKER GAME**

*by the publishers of world-famous MONOPOLY<sup>®</sup>*  
Parker Brothers, Inc., Salem, Mass.



Fred MacLeon Dole



*SPRING MATURE*

